



[Go to Product page](#)

Datasheet for ABIN1043991

## Rabbit anti-Mouse IgG Antibody (Atto 594) - Preadsorbed

### 2 Images

#### Overview

Quantity:	100 µg
Target:	IgG
Reactivity:	Mouse
Host:	Rabbit
Clonality:	Polyclonal
Conjugate:	Atto 594
Application:	Western Blotting (WB), FLISA, Fluorescence Microscopy (FM)

#### Product Details

Immunogen:	Immunogen: highly purified mouse IgG gamma 1, gamma 2a, gamma 2b and gamma 3 proteins Immunogen Type: Native Protein
Isotype:	IgG
Characteristics:	<p>Anti-Mouse IgG (gamma 1, 2a, 2b and 3 chain) conjugated to ATTO 594 is designed for STED microscopy, FRET, immunofluorescence microscopy, fluorescence based plate assays (FLISA) and fluorescent western blotting. This product is also suitable for multiplex analysis, including multicolor imaging, utilizing various commercial platforms.</p> <p>This product is designed for STED microscopy, FRET, immunofluorescence microscopy, fluorescence based plate assays (FLISA) and fluorescent western blotting. This product is also suitable for multiplex analysis, including multicolor imaging, utilizing various commercial platforms.</p>
Purification:	Preadsorption: Solid phase absorption

## Product Details

---

Labeling Ratio: 2.9

## Target Details

---

Target: IgG

Abstract: [IgG Products](#)

Target Type: Antibody

Background: Synonyms: rabbit anti-Mouse IgG (gamma 1, 2a, 2b and 3 chain) Antibody ATTO594 conjugation, rabbit anti-Mouse IgG ATTO594 conjugated Antibody

Background: Anti-Mouse IgG ATTO 594 Antibody generated in rabbit detects reactivity to Mouse IgG1, IgG2a, IgG2b and IgG3. Secreted as part of the adaptive immune response by plasma B cells, immunoglobulin G constitutes 75 % of serum immunoglobulins.

Immunoglobulin G binds to viruses, bacteria, as well as fungi and facilitates their destruction or neutralization via agglutination (and thereby immobilizing them), activation of the compliment cascade, and opsinization for phagocytosis. The whole IgG molecule possesses both the F(c) region, recognized by high-affinity Fc receptor proteins, as well as the F(ab) region possessing the epitope-recognition site. IgG1, IgG2a, IgG2b and IgG3 chains of the antibody molecule are present. Secondary Antibodies are available in a variety of formats and conjugate types. When choosing a secondary antibody product, consideration must be given to species and immunoglobulin specificity, conjugate type, fragment and chain specificity, level of cross-reactivity, and host-species source and fragment composition.

## Application Details

---

Application Notes: Application Note: Anti-Mouse IgG (gamma 1, 2a, 2b and 3 chain) conjugated to ATTO 594 is designed for STED microscopy, FRET, immunofluorescence microscopy, fluorescence based plate assays (FLISA) and fluorescent western blotting. This product is also suitable for multiplex analysis, including multicolor imaging, utilizing various commercial platforms. The emission spectra for this ATTO conjugate matches the principle output wavelengths of most common fluorescence instrumentation.

FLISA Dilution: >1:20,000

Western Blot Dilution: >1:10,000

IF Microscopy Dilution: >1:5,000

Comment: The emission spectra for this ATTO conjugate matches the principle output wavelengths of most common fluorescence instrumentation.

## Application Details

---

Restrictions: For Research Use only

## Handling

---

Format: Lyophilized

Reconstitution: Reconstitution Volume: 500  $\mu$ L  
Reconstitution Buffer: Restore with deionized water (or equivalent)

Concentration: 1.0 mg/mL

Buffer: Buffer: 0.02 M Potassium Phosphate, 0.15 M Sodium Chloride, pH 7.2  
Stabilizer: 10 mg/mL Bovine Serum Albumin (BSA) - Immunoglobulin and Protease free  
Preservative: 0.01 % (w/v) Sodium Azide

Preservative: Sodium azide

Precaution of Use: This product contains Sodium azide: a POISONOUS AND HAZARDOUS SUBSTANCE which should be handled by trained staff only.

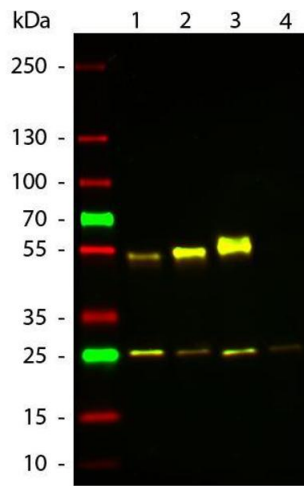
Handling Advice: Avoid cycles of freezing and thawing.  
Do NOT add Sodium Azide!

Product is photosensitive and should be protected from light.

Storage: RT, 4  $^{\circ}$ C, -20  $^{\circ}$ C

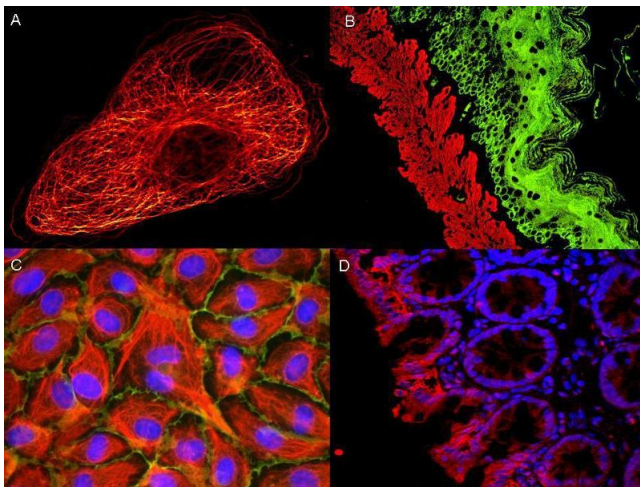
Storage Comment: Store vial at -20  $^{\circ}$ C prior to opening. Aliquot contents and freeze at -20  $^{\circ}$ C or below for extended storage. This product is stable for several weeks at 0  $^{\circ}$ C as an undiluted liquid.

Expiry Date: 12 months



### Western Blotting

**Image 1.** Western Blot of ATTO 594 Rabbit Anti-Mouse IgG (gamma 1, 2a, 2b, 3) secondary antibody. Lane 1: Mouse IgG1. Lane 2: Mouse IgG2a. Lane 3: Mouse IgG2b. Lane 4: Mouse IgG3. Load: 50 ng per lane. Primary antibody: None. Secondary antibody: ATTO 594 rabbit secondary antibody at 1:1,000 for 60 min at RT. Blocking: ABIN925618 for 30 min at RT. Predicted/Observed size: 25 & 55 kDa, 25 & 55 kDa for Mouse IgG Subclasses. Other band(s): None.



### Immunofluorescence

**Image 2.**