



Datasheet for ABIN1043997

## Donkey anti-Rabbit IgG (Fc Region) Antibody (TRITC) - Preadsorbed



[Go to Product page](#)

### 2 Images

#### Overview

Quantity:	2 mg
Target:	IgG
Binding Specificity:	Fc Region
Reactivity:	Rabbit
Host:	Donkey
Clonality:	Polyclonal
Conjugate:	TRITC
Application:	Fluorescence Microscopy (FM)

#### Product Details

Immunogen:	Immunogen: Rabbit IgG F(c) fragment
Isotype:	IgG
Specificity:	Assay by immunoelectrophoresis resulted in a single precipitin arc against anti-Donkey Serum, Rabbit IgG, Rabbit IgG F(c) and Rabbit Serum.
Cross-Reactivity:	Rabbit
Characteristics:	This product is designed for immunofluorescence microscopy, fluorescence based plate assays (FLISA) and fluorescent western blotting. This product is also suitable for multiplex analysis, including multicolor imaging, utilizing various commercial platforms.
Purification:	Preadsorption: Solid phase absorption
Labeling Ratio:	3.9

## Target Details

---

Target:	IgG
Abstract:	<a href="#">IgG Products</a>
Target Type:	Antibody
Background:	<p>Synonyms: Donkey anti-Rabbit IgG F(c) Antibody rhodamine Conjugation, Donkey anti-Rabbit IgG F(c) TRITC Conjugated Antibody</p> <p>Background: Anti-Rabbit IgG F(c) rhodamine antibody generated in donkey is a proteolytic fragment of immunoglobulin G (IgG) obtained by limited digestion with the enzyme papain under controlled conditions of temperature, time and pH . Receptors bind the Fc portion of rabbit IgG and often this fragment is removed from immunoglobulins to minimize receptor binding and lower background reactivity.</p>

## Application Details

---

Application Notes:	<p>Application Note: This product is designed for immunofluorescence microscopy, fluorescence based plate assays (FLISA) and fluorescent western blotting. This product is also suitable for multiplex analysis, including multicolor imaging, utilizing various commercial platforms.</p> <p>IF Microscopy Dilution: 1:500-1:2,500</p>
Restrictions:	For Research Use only

## Handling

---

Format:	Lyophilized
Reconstitution:	<p>Reconstitution Volume: 1.0 mL</p> <p>Reconstitution Buffer: Restore with deionized water (or equivalent)</p>
Concentration:	2.0 mg/mL
Buffer:	<p>Buffer: 0.02 M Potassium Phosphate, 0.15 M Sodium Chloride, pH 7.2</p> <p>Stabilizer: 10 mg/mL Bovine Serum Albumin (BSA) - Immunoglobulin and Protease free</p> <p>Preservative: 0.01 % (w/v) Sodium Azide</p>
Preservative:	Sodium azide
Precaution of Use:	This product contains Sodium azide: a POISONOUS AND HAZARDOUS SUBSTANCE which should be handled by trained staff only.
Handling Advice:	<p>Avoid cycles of freezing and thawing.</p> <p>Product is photosensitive and should be protected from light.</p>

## Handling

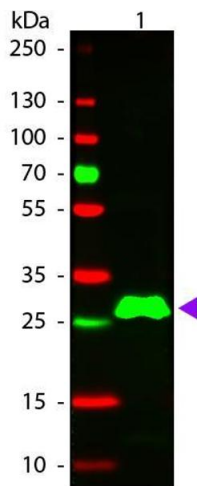
Centrifuge product if not completely clear after standing at room temperature.

Storage: RT, 4 °C, -20 °C

Storage Comment: Store vial at -20 °C prior to opening. Aliquot contents and freeze at -20 °C or below for extended storage. This product is stable for several weeks at 0 °C as an undiluted liquid.

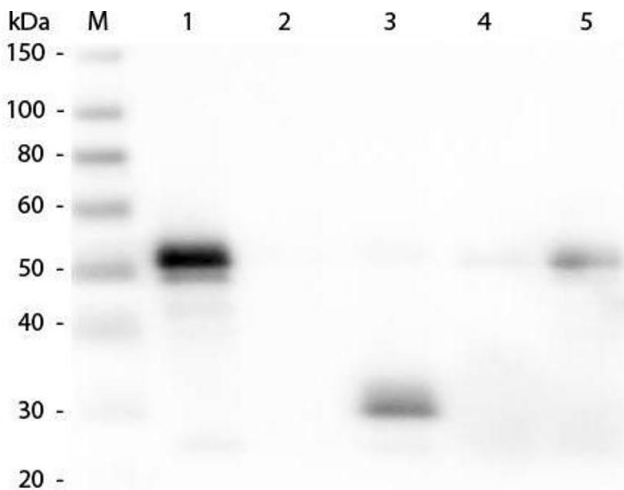
Expiry Date: 12 months

## Images



### Western Blotting

**Image 1.** Western blot of Rhodamine conjugated Donkey Anti-Rabbit IgG F(c) secondary antibody. Lane 1: Rabbit IgG F(c). Lane 2: None. Load: 50 ng per lane. Primary antibody: None. Secondary antibody: Rhodamine donkey secondary antibody at 1:1,000 for 60 min at RT. Blocking: ABIN925618 for 30 min at RT. Predicted/Observed size: 28 kDa, 28 kDa for Rabbit IgG F(c). Other band(s): None.



### Western Blotting

**Image 2.** Western Blot of Anti-Rabbit IgG F(c) (DONKEY) Antibody . Lane M: 3 µl Molecular Ladder. Lane 1: Rabbit IgG whole molecule . Lane 2: Rabbit IgG F(ab) Fragment . Lane 3: Rabbit IgG F(c) Fragment . Lane 4: Rabbit IgM Whole Molecule . Lane 5: Normal Rabbit Serum . All samples were reduced. Load: 50 ng per lane. Block: ABIN925618 for 30 min at RT. Primary Antibody: Anti-Rabbit IgG F(c) (DONKEY) Antibody 1:5,000 for 60 min at RT. Secondary antibody: Anti-Donkey IgG (GOAT) Peroxidase Conjugated Antibody 1:40,000 in ABIN925618 for 30 min at RT. Predicted/Obsevered Size: 25 and 50 kDa for Rabbit IgG and Serum, 25 kDa for F(c) and F(ab), 70 and 23 kDa for IgM. Rabbit F(c) migrates slightly higher.