



Datasheet for ABIN1044003

Rabbit anti-Cow IgG (Heavy & Light Chain) Antibody (Texas Red (TR)) - Preadsorbed



[Go to Product page](#)

1 Image

Overview

Quantity:	500 µL
Target:	IgG
Binding Specificity:	Heavy & Light Chain
Reactivity:	Cow
Host:	Rabbit
Clonality:	Polyclonal
Conjugate:	Texas Red (TR)
Application:	Fluorescence Microscopy (FM)

Product Details

Immunogen:	Immunogen: Bovine IgG whole molecule
Isotype:	IgG
Fragment:	F(ab') ₂ fragment
Specificity:	Assay by immunoelectrophoresis resulted in a single precipitin arc against anti-Rabbit Serum, Bovine IgG and Bovine Serum.
Characteristics:	This product is designed for immunofluorescence microscopy, fluorescence based plate assays (FLISA) and fluorescent western blotting. This product is also suitable for multiplex analysis, including multicolor imaging, utilizing various commercial platforms.
Purification:	Preadsorption: Solid phase absorption
Labeling Ratio:	1.6

Target Details

Target:	IgG
Abstract:	IgG Products
Target Type:	Antibody
Background:	<p>Synonyms: Rabbit F(ab')₂ Anti-Bovine Texas Red™ Conjugated Antibody, Rabbit Fab₂ Anti-Bovine Texas Red™ Conjugated Antibody, Rabbit Fab'₂ Anti-Bovine Antibody Texas Red™ Conjugation</p> <p>Background: F(ab')₂ Antibody was generated by enzymatic cleavage and subsequent separation from the Fc fragment. Because of their smaller size, F(ab)₂ fragments offer several advantages over intact antibodies for use in certain immunochemical techniques and experimental applications. F(ab)₂ fragments penetrate into tissue samples and show better antigen recognition and signal generation in IHC. F(ab)₂ fragments lack the Fc region and therefore do not bind Fc receptors which effectively lowers background staining. F(ab')₂ Antibody is ideal for investigators who routinely perform flow cytometry, immunohistochemistry or IHC and other immunoassays.</p>

Application Details

Application Notes:	<p>Application Note: This product is designed for immunofluorescence microscopy, fluorescence based plate assays (FLISA) and fluorescent western blotting. This product is also suitable for multiplex analysis, including multicolor imaging, utilizing various commercial platforms.</p> <p>IF Microscopy Dilution: 1:500-1:2,500</p>
Comment:	Texas Red™ is a registered trademark of Molecular Probes Inc.
Restrictions:	For Research Use only

Handling

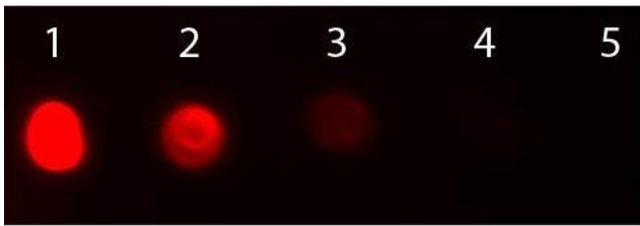
Format:	Lyophilized
Reconstitution:	<p>Reconstitution Volume: 500 µL</p> <p>Reconstitution Buffer: Restore with deionized water (or equivalent)</p>
Concentration:	1.0 mg/mL
Buffer:	Buffer: 0.02 M Potassium Phosphate, 0.15 M Sodium Chloride, pH 7.2
Handling Advice:	Product is photosensitive and should be protected from light.
Storage:	RT, 4 °C, -20 °C

Handling

Storage Comment: Store vial at 4 °C prior to opening. This product is stable for several weeks at 4 °C as an undiluted liquid. For extended storage aliquot contents and freeze at -24 °C or below.

Expiry Date: 12 months

Images



Dot Blot

Image 1. Dot Blot of Rabbit anti-Fab2 Bovine IgG Antibody Texas Red Conjugated. Antigen: Bovine IgG. Load: Lane 1 - 200 ng Lane 2 - 66.7 ng Lane 3 - 22.2 ng Lane 4 - 7.41 ng Lane 5 - 2.47 ng. Primary antibody: n/a. Secondary antibody: Rabbit anti-Fab2 Bovine IgG Antibody Texas Red Conjugated at 1:1,000 for 60 min at RT. Block: ABIN925618 for 60 min at RT.