



Datasheet for ABIN1044018

## Rabbit anti-Goat IgG (Heavy & Light Chain) Antibody (Texas Red (TR)) - Preadsorbed



[Go to Product page](#)

### 1 Image

#### Overview

Quantity:	500 µL
Target:	IgG
Binding Specificity:	Heavy & Light Chain
Reactivity:	Goat
Host:	Rabbit
Clonality:	Polyclonal
Conjugate:	Texas Red (TR)
Application:	Fluorescence Microscopy (FM)

#### Product Details

Immunogen:	Immunogen: Goat IgG whole molecule
Isotype:	IgG
Fragment:	F(ab') <sub>2</sub> fragment
Specificity:	Assay by immunoelectrophoresis resulted in a single precipitin arc against anti-Rabbit Serum, Goat IgG and Goat Serum.
Characteristics:	This product is designed for immunofluorescence microscopy, fluorescence based plate assays (FLISA) and fluorescent western blotting. This product is also suitable for multiplex analysis, including multicolor imaging, utilizing various commercial platforms.
Purification:	Preadsorption: Solid phase absorption
Labeling Ratio:	2.48

## Target Details

---

Target:	IgG
Abstract:	<a href="#">IgG Products</a>
Target Type:	Antibody
Background:	<p>Synonyms: Rabbit F(ab')<sub>2</sub> Anti-Goat IgG Antibody Texas Red™ Conjugation, Rabbit Fab2 Anti-Goat IgG Antibody Texas Red™ Conjugated</p> <p>Background: F(ab')<sub>2</sub> Anti-Goat IgG Texas Red Antibody was generated by enzymatic cleavage and subsequent separation from the Fc fragment. Because of their smaller size, F(ab)<sub>2</sub> fragments offer several advantages over intact antibodies for use in certain immunochemical techniques and experimental applications. F(ab)<sub>2</sub> fragments penetrate tissue samples and show better antigen recognition and signal generation in IHC. F(ab)<sub>2</sub> fragments lack the Fc region and therefore do not bind Fc receptors which effectively lowers background staining. F(ab')<sub>2</sub> Antibody is ideal for investigators who routinely perform flow cytometry, immunohistochemistry or IHC and other immunoassays.</p>

## Application Details

---

Application Notes:	<p>Application Note: This product is designed for immunofluorescence microscopy, fluorescence based plate assays (FLISA) and fluorescent western blotting. This product is also suitable for multiplex analysis, including multicolor imaging, utilizing various commercial platforms.</p> <p>IF Microscopy Dilution: 1:500-1:2,500</p>
Comment:	Texas Red™ is a registered trademark of Molecular Probes Inc.
Restrictions:	For Research Use only

## Handling

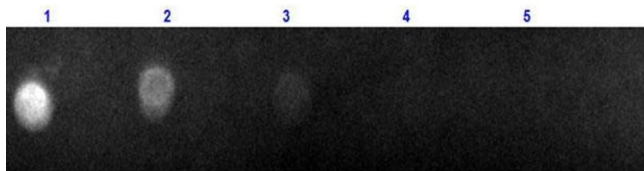
---

Format:	Lyophilized
Reconstitution:	<p>Reconstitution Volume: 500 µL</p> <p>Reconstitution Buffer: Restore with deionized water (or equivalent)</p>
Concentration:	1 mg/mL
Buffer:	<p>Buffer: 0.02 M Potassium Phosphate, 0.15 M Sodium Chloride, pH 7.2</p> <p>Stabilizer: 10 mg/mL Bovine Serum Albumin (BSA) - Immunoglobulin and Protease free</p> <p>Preservative: 0.01 % (w/v) Sodium Azide</p>
Preservative:	Sodium azide

## Handling

Precaution of Use:	This product contains Sodium azide: a POISONOUS AND HAZARDOUS SUBSTANCE which should be handled by trained staff only.
Handling Advice:	Avoid cycles of freezing and thawing. This vial contains a relatively low volume of reagent (25 µL). To minimize loss of volume dilute 1:10 by adding 225 µL of the buffer stated above directly to the vial. Recap, mix thoroughly and briefly centrifuge to collect the volume at the bottom of the vial. Use this intermediate dilution when calculating final dilutions as recommended below. Product is photosensitive and should be protected from light.
Storage:	RT,4 °C,-20 °C
Storage Comment:	Store vial at -20 °C or below prior to opening. Store the vial at -20 °C or below after dilution.
Expiry Date:	12 months

## Images



### Dot Blot

**Image 1.** Dot Blot of F(ab)<sub>2</sub> Rabbit Anti-Goat IgG (H&L) Antibody Texas Conjugated Dot Blot of F(ab)<sub>2</sub> Anti-Goat IgG (H&L) Antibody Texas Red Conjugated. Lane 1: 100ng of Goat IgG. Lanes 2-5: Serial Dilution in 3-fold. Primary Antibody: none. Secondary Antibody: F(ab)<sub>2</sub> Rabbit Anti-Goat IgG (H&L) Antibody Texas Conj'd at 1mg/mL at RT for 1 hour. Block: ABIN925618 at RT for 30 minutes.