

Datasheet for ABIN1044054

**Donkey anti-Rabbit IgG (Heavy & Light Chain) Antibody  
(TRITC) - Preadsorbed**[Go to Product page](#)**1** Image

## Overview

Quantity:	500 µL
Target:	IgG
Binding Specificity:	Heavy & Light Chain
Reactivity:	Rabbit
Host:	Donkey
Clonality:	Polyclonal
Conjugate:	TRITC
Application:	Fluorescence Microscopy (FM)

## Product Details

Immunogen:	Immunogen: Rabbit IgG whole molecule
Isotype:	IgG
Fragment:	F(ab') <sub>2</sub> fragment
Specificity:	Assay by immunoelectrophoresis resulted in a single precipitin arc against anti-Donkey Serum, Rabbit IgG and Rabbit Serum.
Characteristics:	This product is designed for immunofluorescence microscopy, fluorescence based plate assays (FLISA) and fluorescent western blotting. This product is also suitable for multiplex analysis, including multicolor imaging, utilizing various commercial platforms.
Purification:	Preadsorption: Solid phase absorption
Labeling Ratio:	2.5

## Target Details

---

Target:	IgG
Abstract:	<a href="#">IgG Products</a>
Target Type:	Antibody
Background:	<p>Synonyms: Donkey F(ab')<sub>2</sub> Anti-Rabbit IgG Rhodamine Conjugated Antibody, Donkey Fab2 Anti-Rabbit IgG Antibody TRITC Conjugation</p> <p>Background: F(ab')<sub>2</sub> Anti-Rabbit IgG (H&amp;L) Antibody generated in donkey detects rabbit IgG. Representing approximately 75 % of serum immunoglobulins, IgG is the most abundant antibody isotype found in the circulation. IgG molecules are synthesized and secreted by plasma B cells. Secondary Antibodies are available in a variety of formats and conjugate types. When choosing a secondary antibody product, consideration must be given to species and immunoglobulin specificity, conjugate type, fragment and chain specificity, level of cross-reactivity, and host-species source and fragment composition. F(ab')<sub>2</sub> Antibody is ideal for investigators who routinely perform flow cytometry, immunofluorescence, IHC, and other immunoassays. This F(ab')<sub>2</sub> Anti-Rabbit IgG Antibody is conjugated to Rhodamine.</p>

## Application Details

---

Application Notes:	<p>Application Note: This product is designed for immunofluorescence microscopy, fluorescence based plate assays (FLISA) and fluorescent western blotting. This product is also suitable for multiplex analysis, including multicolor imaging, utilizing various commercial platforms requiring extremely low background levels, absence of F(c) mediated binding, lot-to-lot consistency, high titer and specificity.</p> <p>IF Microscopy Dilution: 1:500-1:2,500</p>
--------------------	---

Restrictions:	For Research Use only
---------------	-----------------------

## Handling

---

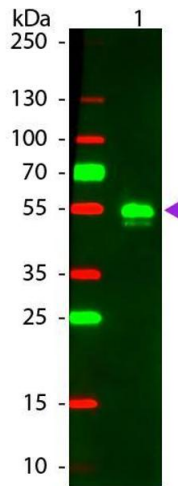
Format:	Lyophilized
Reconstitution:	Reconstitution Volume: 500 µL Reconstitution Buffer: Restore with deionized water (or equivalent)
Concentration:	1.0 mg/mL
Buffer:	Buffer: 0.02 M Potassium Phosphate, 0.15 M Sodium Chloride, pH 7.2
Handling Advice:	Product is photosensitive and should be protected from light.
Storage:	RT, 4 °C, -20 °C

## Handling

Storage Comment: Store vial at 4 °C prior to opening. This product is stable for several weeks at 4 °C as an undiluted liquid. For extended storage aliquot contents and freeze at -24 °C or below.

Expiry Date: 12 months

## Images



### Western Blotting

**Image 1.** Western Blot of Donkey anti-Rabbit IgG Pre-Absorbed Rhodamine Conjugated Secondary Antibody. Lane 1: Rabbit IgG. Lane 2: None. Load: 50 ng per lane. Primary antibody: None. Secondary antibody: Rhodamine donkey secondary antibody at 1:1,000 for 60 min at RT. Block: ABIN925618 for 30 min at RT. Predicted/Observed size: 28 & 55 kDa, 55 kDa for Rabbit IgG. Other band(s): None.