



Datasheet for ABIN1044089

Rabbit anti-Sheep IgG (Heavy & Light Chain) Antibody (TRITC) - Preadsorbed



[Go to Product page](#)

1 Image

Overview

Quantity:	500 µL
Target:	IgG
Binding Specificity:	Heavy & Light Chain
Reactivity:	Sheep
Host:	Rabbit
Clonality:	Polyclonal
Conjugate:	TRITC
Application:	Flow Cytometry (FACS), FLISA, Fluorescence Microscopy (FM)

Product Details

Immunogen:	Immunogen: Sheep IgG whole molecule
Isotype:	IgG
Fragment:	Fab fragment
Specificity:	Assay by immunoelectrophoresis resulted in a single precipitin arc against anti-Fluorescein and anti-Rabbit Serum.
Characteristics:	This product is designed for immunofluorescence microscopy, fluorescence based plate assays (FLISA) and fluorescent western blotting. This product is also suitable for multiplex analysis, including multicolor imaging, utilizing various commercial platforms.
Purification:	PreadSORption: Solid phase absorption
Labeling Ratio:	1.3

Target Details

Target:	IgG
Abstract:	IgG Products
Target Type:	Antibody
Background:	<p>Synonyms: Rabbit Fab Anti-Sheep IgG Antibody Rhodamine Conjugation, Rabbit Fab Anti-Sheep IgG TRITC Conjugated Antibody</p> <p>Background: Fab Anti-Sheep IgG (H&L) Antibody generated in rabbit detects sheep IgG. Representing approximately 75 % of serum immunoglobulins, IgG is the most abundant antibody isotype found in the circulation. IgG molecules are synthesized and secreted by plasma B cells. Secondary Antibodies are available in a variety of formats and conjugate types. When choosing a secondary antibody product, consideration must be given to species and immunoglobulin specificity, conjugate type, fragment and chain specificity, level of cross-reactivity, and host-species source and fragment composition. Fab Antibody is ideal for investigators who routinely perform flow cytometry, immunofluorescence, IHC, and other immunoassays. This Fab Anti-sheep IgG Antibody is conjugated to rhodamine.</p>

Application Details

Application Notes:	<p>Application Note: This product is designed for immunofluorescence microscopy, fluorescence based plate assays (FLISA) and fluorescent western blotting. This product is also suitable for multiplex analysis, including multicolor imaging, utilizing various commercial platforms requiring extremely low background levels, absence of F(c) mediated binding, lot-to-lot consistency, high titer and specificity.</p> <p>FLISA Dilution: 1:10,000 - 1:50,000</p> <p>Flow Cytometry Dilution: 1:500 - 1:2,500</p> <p>IF Microscopy Dilution: 1:1,000 - 1:5,000</p>
--------------------	--

Restrictions:	For Research Use only
---------------	-----------------------

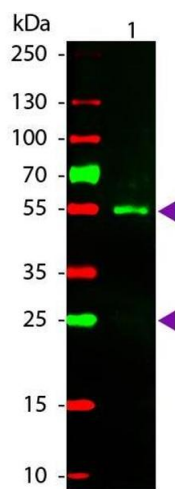
Handling

Format:	Lyophilized
Reconstitution:	Reconstitution Volume: 500 μ L Reconstitution Buffer: Restore with deionized water (or equivalent)
Concentration:	1.0 mg/mL
Buffer:	Buffer: 0.02 M Potassium Phosphate, 0.15 M Sodium Chloride, pH 7.2

Handling

Handling Advice:	Avoid cycles of freezing and thawing. Product is photosensitive and should be protected from light. Centrifuge product if not completely clear after standing at room temperature.
Storage:	RT,4 °C,-20 °C
Storage Comment:	Store vial at 4 °C prior to restoration. For extended storage aliquot contents and freeze at -24 °C or below. This product is stable for several weeks at 4 °C as an undiluted liquid.
Expiry Date:	12 months

Images



Western Blotting

Image 1. Western Blot of Rhodamine conjugated Rabbit Fab Anti-Sheep IgG secondary antibody. Lane 1: Sheep IgG. Lane 2: None. Load: 50 ng per lane. Primary antibody: None. Secondary antibody: Rhodamine rabbit secondary antibody at 1:1,000 for 60 min at RT. Blocking: ABIN925618 for 30 min at RT. Predicted/Observed size: 25 & 55 kDa, 25 & 55 kDa for Sheep IgG. Other band(s): None.