

Datasheet for ABIN1044851

## Loading Control antibody sampler Kit

**3** Images[Go to Product page](#)

### Overview

---

Quantity:	1 kit
Target:	Loading Control
Application:	Western Blotting (WB)

### Product Details

---

Immunogen:	VDAC, GAPDH, alpha-Tubulin, HDAC-1, beta-Actin
------------	------------------------------------------------

### Target Details

---

Target:	Loading Control
Background:	The Loading Control Antibody Sampler Kit contains antibodies to a variety of housekeeping proteins. Loading controls are essential for the interpretation of western blot data. Loading control antibodies allow the verification of equal protein loading between samples. Ideal loading controls are expressed constitutively and at high levels with low variability between cell lines and experimental conditions. Also, the loading control should be at a different molecular weight than the protein of interest this allows the bands to be visually distinguishable. The Loading Control Antibody Sampler kit contains enough primary and secondary antibodies to perform ten western blots per loading control antibody.

### Application Details

---

Application Notes:	Each kit contains one unit of the following products: Anti-VDAC/Porin (RABBIT) Antibody (25 µL) Anti-Glyceraldehyde-3-Phosphate Dehydrogenase (GAPDH) (RABBIT) Antibody (25 µL) Anti-alpha-Tubulin (RABBIT) Antibody (25 µL) Anti-HDAC-1 (RABBIT) Antibody (25 µL) Anti-beta Actin (RABBIT) Antibody (25 µL) Anti-RABBIT IgG (H&L) (GOAT) Antibody Peroxidase
--------------------	---------------------------------------------------------------------------------------------------------------------------------------------------------------------------------------------------------------------------------------------------------------------------------------------------------------------------------------------------------------

## Application Details

Conjugated (2 mg)

Restrictions: For Research Use only

## Handling

Format: Liquid

Buffer: 0.02 M Potassium Phosphate, 0.15 M Sodium Chloride, pH 7.2

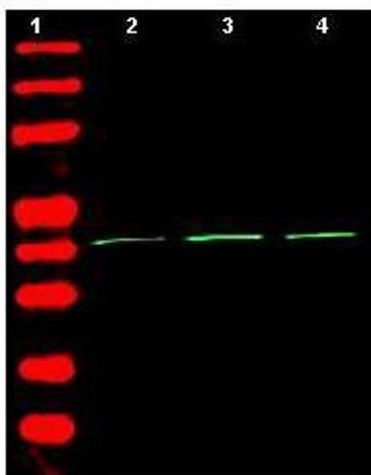
Storage: -20 °C

## Images



### Western Blotting

**Image 1.** Western Blot of Rabbit Anti-HDAC-1 Antibody. Lane 1: 293 whole cell lysate. Lane 2: none. Load: 35 µg per lane. Primary antibody: HDAC-1 antibody at 1:3,500 for overnight at 4°C. Secondary antibody: rabbit secondary antibody at 1:10,000 for 45 min at RT. Block: 5% BLOTTO overnight at 4°C. Predicted/Observed size: ~65 kDa corresponding to human HDAC1. Other band(s): none.



### Western Blotting

**Image 2.** Western Blot of Rabbit Anti-Beta Actin Antibody. Lane 1: molecular weight. Lane 2: human embryonic kidney 293. Lane 3: human lung carcinoma A549. Lane 4: mouse brain. Load: 35 µg per lane. Primary antibody: Beta Actin antibody at 1:1,500 for overnight at 4°C. Secondary antibody: rabbit secondary antibody at 1:10,000 for 45 min at RT. Block: 5% BLOTTO overnight at 4°C. Predicted/Observed size: ~42 kDa corresponding to beta Actin (arrowhead). Other band(s): none.



### Western Blotting

**Image 3.** Western Blot of Rabbit Anti-Alpha Tubulin Antibody. Lane 1: whole cell lysates from mouse brain. Lane 2: rat brain. Lane 3: A431 cells. Lane 4: Jurkat cells. Lane 5: HeLa cells. Load: 35 µg per lane. Primary antibody: Alpha Tubulin antibody at 1:1,200 for overnight at 4°C. Secondary antibody: rabbit secondary antibody at 1:10,000 for 45 min at RT. Block: 5% BLOTTO overnight at 4°C. Predicted/Observed size: ~50 kDa corresponding to alpha tubulin (arrowhead). Other band(s): none.