

Datasheet for ABIN1044916

Rabbit Blood (In Sodium Citrate)[Go to Product page](#)**2** Images

Overview

Quantity:	50 mL
Host:	Rabbit
Application:	Haemagglutination (H)

Product Details

Protein Source:	Blood
Characteristics:	Strain: Rabbit - New Zealand White Sex: Mixed
Sterility:	Sterile drawn
Components:	Rabbit Blood (In Sodium Citrate)
Lysate Type:	Normal

Application Details

Application Notes:	Washed pooled cells preparations, complement titration, adsorption procedures, HA assays and for the preparation of stroma as particulate reagents.
Comment:	Citrated rabbit blood is aseptically collected and prepared to order from our colony of animals. These cell suspensions are useful for the titration of complement, adsorption procedures, testing for agglutinins/HA assays, and for the preparation of stroma as particulate reagents. Rabbit red blood cells are perishable and are collected and processed upon receipt of your order.
Restrictions:	For Research Use only

Handling

Format:	Liquid
Buffer:	Sodium Citrate
Handling Advice:	Use aseptic technique to maintain sterility when opening product. Be advised that blood is a perishable product and exact shelf life may depend on application.
Storage:	4 °C
Storage Comment:	This product MAY be stable for up to two (2) weeks if properly stored and handled.
Expiry Date:	2 weeks

Images

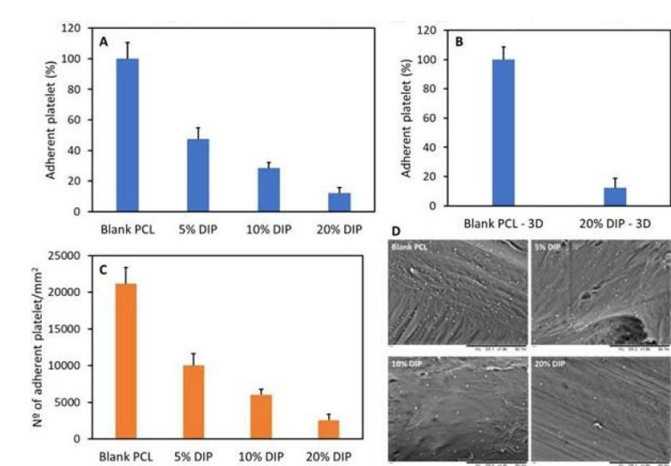


Image 1. Percentage of rabbit blood platelet depositions on the molded (A) and 3D printed (B) vascular grafts surface, and quantification of rabbit blood platelet depositions on the molded vascular grafts surface (C). SEM images of rabbit blood platelet depositions on the surfaces of the molded vascular grafts (D). Rabbit Blood in Sodium Citrate (p/n R209-0050). Fig. 7. PMID: 34579894.

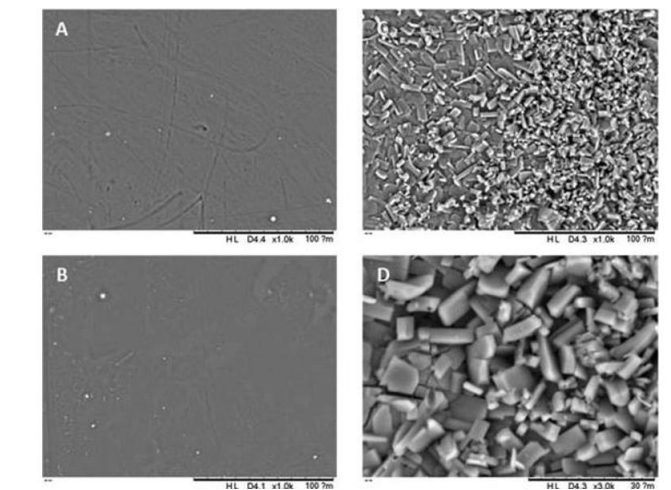


Image 2. SEM images of the surface of 3D-printed tubular grafts: blank (A), 5 % (w/w) ASA (B), 10 % (w/w) ASA (C), Higher magnification of 10 % (w/w) ASA (D). Figure 2. PMID: 34577621.