

Datasheet for ABIN1046564

SLPI Protein (AA 26-132, full length) (GST tag)[Go to Product page](#)**1** Image**2** Publications

Overview

Quantity:	50 µg
Target:	SLPI
Protein Characteristics:	AA 26-132, full length
Reactivity:	Please inquire
Source:	Escherichia coli (E. coli)
Protein Type:	Recombinant
Purification tag / Conjugate:	This SLPI protein is labelled with GST tag.
Application:	ELISA

Product Details

Sequence:	SGKSFKAGVC PPKKSAQCLR YKKPECQSDW QCPGKKRCCP DTCGIKCLDP VDTNPTRRK PGKCPVTYGQ CLMLNPPNFC EMDGQCKRDL KCCMGMCCKS CVSPVKA
Characteristics:	Please inquire if you are interested in this recombinant protein expressed in E. coli, mammalian cells or by baculovirus infection. Be aware about differences in price and lead time.
Purity:	90 %

Target Details

Target:	SLPI
Alternative Name:	Antileukoproteinase protein (SLPI Products)
Background:	Acid-stable proteinase inhibitor with strong affinities for trypsin, chymotrypsin, elastase, and cathepsin G. May prevent elastase-mediated damage to oral and possibly other mucosal

Target Details

	tissues.
Molecular Weight:	39.1 kD
UniProt:	P03973

Application Details

Comment:	The yeast protein expression system is the most economical and efficient eukaryotic system for secretion and intracellular expression. A protein expressed by the mammalian cell system is of very high-quality and close to the natural protein. But the low expression level, the high cost of medium and the culture conditions restrict the promotion of mammalian cell expression systems. The yeast protein expression system serve as a eukaryotic system integrate the advantages of the mammalian cell expression system. A protein expressed by yeast system could be modiflicated such as glycosylation, acylation, phosphorylation and so on to ensure the native protein conformation. It can be used to produce protein material with high added value that is very close to the natural protein. Our proteins produced by yeast expression system has been used as raw materials for downstream preparation of monoclonal antibodies.
Restrictions:	For Research Use only

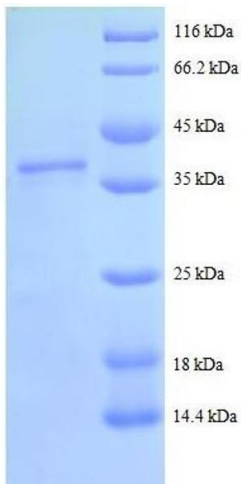
Handling

Format:	Lyophilized
Concentration:	0.2-2 mg/mL
Buffer:	Tris-based buffer, 50 % glycerol
Handling Advice:	Repeated freezing and thawing is not recommended. Store working aliquots at 4 °C for up to one week
Storage:	-20 °C
Storage Comment:	Store at -20 °C for extended storage, conserve at -20 °C or -80 °C

Publications

Product cited in:	Stetler, Brewer, Thompson: "Isolation and sequence of a human gene encoding a potent inhibitor of leukocyte proteases." in: Nucleic acids research , Vol. 14, Issue 20, pp. 7883-96, (1986) (PubMed).
	Heinzel, Appelhans, Gassen, Seemüller, Machleidt, Fritz, Steffens: "Molecular cloning and

expression of cDNA for human antileukoprotease from cervix uterus." in: **European journal of biochemistry / FEBS**, Vol. 160, Issue 1, pp. 61-7, (1986) ([PubMed](#)).



SDS-PAGE

Image 1. Secretory Leukocyte Peptidase Inhibitor (SLPI) (AA 26-132), (full length) protein (GST tag)