

Datasheet for ABIN1046972

Endothelin 1 Protein (EDN1) (AA 53-73) (GST tag)



[Go to Product page](#)

1 Image

3 Publications

Overview

Quantity:	100 µg
Target:	Endothelin 1 (EDN1)
Protein Characteristics:	AA 53-73
Origin:	Human
Source:	Escherichia coli (E. coli)
Protein Type:	Recombinant
Biological Activity:	Active
Purification tag / Conjugate:	This Endothelin 1 protein is labelled with GST tag.
Application:	ELISA

Product Details

Sequence:	CSCSSLMDKE CVYFCHLDII W
Characteristics:	Please inquire if you are interested in this recombinant protein expressed in E. coli, mammalian cells or by baculovirus infection. Be aware about differences in price and lead time.
Purity:	90 %
Biological Activity Comment:	Measured by its binding ability in a functional ELISA. Immobilized EDNRB at 5 µg/ml can bind human EDN1 with a linear range of 6.25-25.00 µg/ml.

Target Details

Target:	Endothelin 1 (EDN1)
---------	---------------------

Target Details

Alternative Name:	Endothelin-1 protein (EDN1 Products)
Background:	Endothelins are endothelium-derived vasoconstrictor peptides.
Molecular Weight:	29.9 kD
UniProt:	P05305
Pathways:	Hormone Transport , Negative Regulation of Hormone Secretion , Regulation of Systemic Arterial Blood Pressure by Hormones , cAMP Metabolic Process , Regulation of Muscle Cell Differentiation , Regulation of G-Protein Coupled Receptor Protein Signaling , Regulation of Cell Size

Application Details

Comment:	The yeast protein expression system is the most economical and efficient eukaryotic system for secretion and intracellular expression. A protein expressed by the mammalian cell system is of very high-quality and close to the natural protein. But the low expression level, the high cost of medium and the culture conditions restrict the promotion of mammalian cell expression systems. The yeast protein expression system serve as a eukaryotic system integrate the advantages of the mammalian cell expression system. A protein expressed by yeast system could be modiflicated such as glycosylation, acylation, phosphorylation and so on to ensure the native protein conformation. It can be used to produce protein material with high added value that is very close to the natural protein. Our proteins produced by yeast expression system has been used as raw materials for downstream preparation of monoclonal antibodies.
Restrictions:	For Research Use only

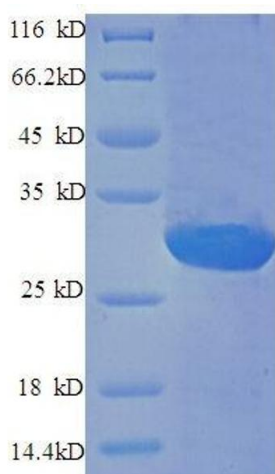
Handling

Format:	Lyophilized
Concentration:	0.2-2 mg/mL
Buffer:	PBS-based buffer, 50 % glycerol
Handling Advice:	Repeated freezing and thawing is not recommended. Store working aliquots at 4 °C for up to one week
Storage:	-20 °C
Storage Comment:	Store at -20 °C for extended storage, conserve at -20 °C or -80 °C

Publications

- Product cited in:
- Inoue, Yanagisawa, Takawa, Mitsui, Kobayashi, Masaki: "The human preproendothelin-1 gene. Complete nucleotide sequence and regulation of expression." in: **The Journal of biological chemistry**, Vol. 264, Issue 25, pp. 14954-9, (1989) ([PubMed](#)).
- Bloch, Friedrich, Lee, Eddy, Shows, Quertermous: "Structural organization and chromosomal assignment of the gene encoding endothelin." in: **The Journal of biological chemistry**, Vol. 264, Issue 18, pp. 10851-7, (1989) ([PubMed](#)).
- Itoh, Yanagisawa, Ohkubo, Kimura, Kosaka, Inoue, Ishida, Mitsui, Onda, Fujino: "Cloning and sequence analysis of cDNA encoding the precursor of a human endothelium-derived vasoconstrictor peptide, endothelin: identity of human and porcine endothelin." in: **FEBS letters**, Vol. 231, Issue 2, pp. 440-4, (1988) ([PubMed](#)).

Images



SDS-PAGE

Image 1. Endothelin 1 (EDN1) (AA 53-73), (full length) protein (GST tag)