

Datasheet for ABIN1046984

ESAT-6-Like Protein EsxB Protein (AA 2-100, full length) (His tag)



[Go to Product page](#)

1 Image

Overview

Quantity:	50 µg
Target:	ESAT-6-Like Protein EsxB
Protein Characteristics:	AA 2-100, full length
Origin:	Mycobacterium tuberculosis
Source:	Escherichia coli (E. coli)
Protein Type:	Recombinant
Purification tag / Conjugate:	This ESAT-6-Like Protein EsxB protein is labelled with His tag.
Application:	SDS-PAGE (SDS), ELISA

Product Details

Sequence:	AEMKTDAATL AQEAGNFERI SGDLKTQIDQ VESTAGSLQG QWRGAAGTAA QAAVVRFQEA ANKKQKQELDE ISTNIRQAGV QYSRADEEQQ QALSSQMGF
Characteristics:	Forms a tight 1:1 complex with EsxA (ESAT-6). Interacts with EccCb1 and PPE68.
Purity:	90 %

Target Details

Target:	ESAT-6-Like Protein EsxB
Abstract:	ESAT-6-Like Protein EsxB Products
Background:	Synonyms: 10 kDa culture filtrate antigen CFP-10 Secreted antigenic protein MTSA-10
Molecular Weight:	14.8 kD

Target Details

UniProt: [P0A566](#)

Application Details

Comment: Repeated freezing and thawing is not recommended. Store working aliquots at 4°C for up to one week.

Restrictions: For Research Use only

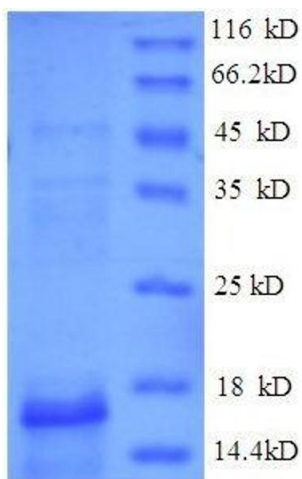
Handling

Format: Lyophilized

Buffer: 20mM Tris-HCl, 0.5M NaCl, 10% glycerin, PH 8.0, 200 mM Imidazole

Storage: -20 °C

Images



SDS-PAGE

Image 1. ESAT-6-Like Protein EsxB (AA 2-100), (full length) protein (His tag)