

Datasheet for ABIN1047087

## GSTP1 Protein (AA 2-210, full length) (His tag)



[Go to Product page](#)

### 1 Image

#### Overview

Quantity:	100 µg
Target:	GSTP1
Protein Characteristics:	AA 2-210, full length
Origin:	Human
Source:	Escherichia coli (E. coli)
Protein Type:	Recombinant
Purification tag / Conjugate:	This GSTP1 protein is labelled with His tag.
Application:	ELISA

#### Product Details

Sequence:	PPYTVVYFPV RGRCAALRML LADQQQSWKE EVVTVETWQE GSLKASCLYG QLPKFQDGD TLYQSNTILR HLGRTLGLYG KDQQAALVD MVNDGVEDLR CKYISLIYTN YEAGKDDYVK ALPGQLKPF TLLSQNQGGK TFIVGDQISF ADYNLLDLLL IHEVLAPGCL DAFPLLSAYV GRLSARPKLK AFLASPEYVN LPINGNGKQ
Characteristics:	Please inquire if you are interested in this recombinant protein expressed in E. coli, mammalian cells or by baculovirus infection. Be aware about differences in price and lead time.
Purity:	90 %

#### Target Details

Target:	GSTP1
Alternative Name:	Glutathione S-transferase P protein ( <a href="#">GSTP1 Products</a> )

## Target Details

---

Background:	Conjugation of reduced glutathione to a wide number of exogenous and endogenous hydrophobic electrophiles. Regulates negatively CDK5 activity via p25/p35 translocation to prevent neurodegeneration.
Molecular Weight:	27.3 kD
UniProt:	<a href="#">P09211</a>
Pathways:	<a href="#">Cellular Response to Molecule of Bacterial Origin</a>

## Application Details

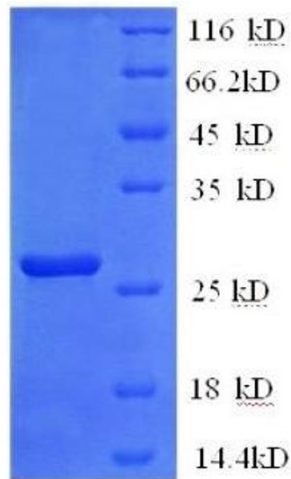
---

Comment:	The yeast protein expression system is the most economical and efficient eukaryotic system for secretion and intracellular expression. A protein expressed by the mammalian cell system is of very high-quality and close to the natural protein. But the low expression level, the high cost of medium and the culture conditions restrict the promotion of mammalian cell expression systems. The yeast protein expression system serve as a eukaryotic system integrate the advantages of the mammalian cell expression system. A protein expressed by yeast system could be modiflicated such as glycosylation, acylation, phosphorylation and so on to ensure the native protein conformation. It can be used to produce protein material with high added value that is very close to the natural protein. Our proteins produced by yeast expression system has been used as raw materials for downstream preparation of monoclonal antibodies.
Restrictions:	For Research Use only

## Handling

---

Format:	Lyophilized
Concentration:	0.2-2 mg/mL
Buffer:	Tris-based buffer, 50 % glycerol
Handling Advice:	Repeated freezing and thawing is not recommended. Store working aliquots at 4 °C for up to one week
Storage:	-20 °C
Storage Comment:	Store at -20 °C for extended storage, conserve at -20 °C or -80 °C



#### SDS-PAGE

**Image 1.** Glutathione S-Transferase pi 1 (GSTP1) (AA 2-210), (full length) protein (His tag)