

Datasheet for ABIN1047114
CXCL1 Protein (AA 29-96) (His tag)



[Go to Product page](#)

1 Image

1 Publication

Overview

Quantity:	100 µg
Target:	CXCL1
Protein Characteristics:	AA 29-96
Origin:	Mouse
Source:	Escherichia coli (E. coli)
Protein Type:	Recombinant
Purification tag / Conjugate:	This CXCL1 protein is labelled with His tag.
Application:	SDS-PAGE (SDS), ELISA

Product Details

Sequence:	NELRCQCLQT MAGIHLKNIQ SLKVLPSGPH CTQTEVIATL KNGREACLDP EAPLVQKIVQ KMLKGVPK
Characteristics:	Has chemotactic activity for neutrophils. Contributes to neutrophil activation during inflammation By similarity. Hematoregulatory chemokine, which, in vitro, suppresses hematopoietic progenitor cell proliferation. KC(5-72) shows a highly enhanced hematopoietic activity.
Purity:	90 %

Target Details

Target:	CXCL1
Abstract:	CXCL1 Products

Target Details

Background: Synonyms: C-X-C motif chemokine 1, Platelet-derived growth factor-inducible protein KC, Secretory protein N51

Molecular Weight: 11.6 kD

UniProt: [P12850](#)

Pathways: [Autophagy](#)

Application Details

Comment: Repeated freezing and thawing is not recommended. Store working aliquots at 4°C for up to one week.

Restrictions: For Research Use only

Handling

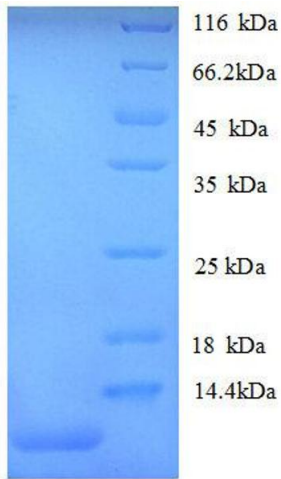
Format: Lyophilized

Buffer: 20mM Tris-HCl, 0.5M NaCl, 10% glycerin, PH 8.0, 200 mM Imidazole

Storage: -20 °C

Publications

Product cited in: Oquendo, Alberta, Wen, Graycar, Derynck, Stiles: "The platelet-derived growth factor-inducible KC gene encodes a secretory protein related to platelet alpha-granule proteins." in: **The Journal of biological chemistry**, Vol. 264, Issue 7, pp. 4133-7, (1989) ([PubMed](#)).



SDS-PAGE

Image 1. Growth-Regulated alpha (AA 29-96) protein (His tag)