

Datasheet for ABIN1047299

KRT8 Protein (AA 2-483, full length) (His-SUMO Tag)



[Go to Product page](#)

1 Image

Overview

| | |
|-------------------------------|--|
| Quantity: | 50 µg |
| Target: | KRT8 |
| Protein Characteristics: | AA 2-483, full length |
| Origin: | Human |
| Source: | Escherichia coli (E. coli) |
| Protein Type: | Recombinant |
| Purification tag / Conjugate: | This KRT8 protein is labelled with His-SUMO Tag. |
| Application: | ELISA |

Product Details

| | |
|------------------|---|
| Sequence: | <p>SIRVTQKSYK VSTSGPRAFS SRSYTSGPGS RISSSSFSRV GSSNFRGGLG GGYGGASGMG</p> <p>GITAVTVNQS LLSPLVLEVD PNIQAVRTQE KEQIKTLNNK FASFIDKVRF LEQQNKMLET</p> <p>KWSLLQQQKT ARSNMDNMFE SYINNLRRQL ETLGQEKLLK EALGNMQGL VEDFKNKYED</p> <p>EINKRTEMEN EFVLIKKDVD EAYMNKVELE SRLEGLTDEI NFLRQLYEEE IRELQSQISD</p> <p>TSVVLSDMNS RSLDMDSIIA EVKAQYEDIA NRSRAEAESM YQIKYEELQS LAGKHGDDLRL</p> <p>RTKTEISEMN RNISRLQAEI EGLKGQRASL EAAIADAEQR GELAIKDANA KLSELEAALQ</p> <p>RAKQDMARQL REYQELMNVK LALDIEIATY RKLLEGEESR LESGMQNMSI HTKTTSGYAG</p> <p>GLSSAYGGLT SPGLSYSLGS SFGSGAGSSS FSRTSSRAV VVKKIETRDG KLVSESSDVL PK</p> |
| Characteristics: | Please inquire if you are interested in this recombinant protein expressed in E. coli, mammalian cells or by baculovirus infection. Be aware about differences in price and lead time. |

Target Details

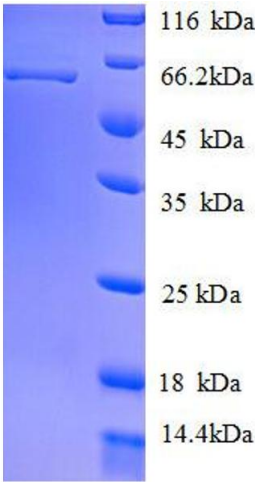
| | |
|-------------------|--|
| Target: | KRT8 |
| Alternative Name: | Keratin, type II cytoskeletal 8 protein (KRT8 Products) |
| Background: | Together with KRT19, helps to link the contractile apparatus to dystrophin at the costameres of striated muscle. |
| Molecular Weight: | 57.6 kD |
| UniProt: | P05787 |

Application Details

| | |
|---------------|---|
| Comment: | <p>Tag Info: N-terminal 6xHis-SUMO-tagged</p> <p>The yeast protein expression system is the most economical and efficient eukaryotic system for secretion and intracellular expression. A protein expressed by the mammalian cell system is of very high-quality and close to the natural protein. But the low expression level, the high cost of medium and the culture conditions restrict the promotion of mammalian cell expression systems. The yeast protein expression system serve as a eukaryotic system integrate the advantages of the mammalian cell expression system. A protein expressed by yeast system could be modified such as glycosylation, acylation, phosphorylation and so on to ensure the native protein conformation. It can be used to produce protein material with high added value that is very close to the natural protein. Our proteins produced by yeast expression system has been used as raw materials for downstream preparation of monoclonal antibodies.</p> |
| Restrictions: | For Research Use only |

Handling

| | |
|------------------|---|
| Format: | Lyophilized |
| Concentration: | 0.2-2 mg/mL |
| Buffer: | 10 mM Tris-HCl, 1 mM EDTA, pH 8.0, 50 % glycerol |
| Handling Advice: | Repeated freezing and thawing is not recommended. Store working aliquots at 4 °C for up to one week |
| Storage: | -20 °C |
| Storage Comment: | Store at -20 °C for extended storage, conserve at -20 °C or -80 °C |



SDS-PAGE

Image 1. Keratin 8 (KRT8) (AA 2-483), (full length) protein (His tag)