

Datasheet for ABIN1047743

**TFPI Protein (AA 29-280, partial) (GST tag)**[Go to Product page](#)**1** Image**3** Publications

## Overview

Quantity:	100 µg
Target:	TFPI
Protein Characteristics:	AA 29-280, partial
Origin:	Human
Source:	Escherichia coli (E. coli)
Protein Type:	Recombinant
Purification tag / Conjugate:	This TFPI protein is labelled with GST tag.
Application:	ELISA

## Product Details

Sequence:	DSEEDDEHTI ITDTELPPLK LMHSFCAFKK DDGPCKAIMK RFFFNIFTRQ CEEFIYGGCE GNQNRFSLE ECKKMCTRDN ANRIKTTTLQ QEKPDFCFLE EDPGICRGYI TRYFYNNQTK QCERFKYGGC LGNMNNFETL EECKNICEDG PNGFQVDNYG TQLNAVNNNSL TPQSTKVP SL FEFHGSPWCL TPADRGLCRA NENRFYNSV IGKCRPFKYS GCGGNENNFT SKQECLRACK KGFIQRISKG GL
Characteristics:	Please inquire if you are interested in this recombinant protein expressed in E. coli, mammalian cells or by baculovirus infection. Be aware about differences in price and lead time.
Purity:	90 %

## Target Details

Target:	TFPI
---------	------

## Target Details

Alternative Name:	Tissue factor pathway inhibitor protein ( <a href="#">TFPI Products</a> )
Background:	Inhibits factor X (X(a)) directly and, in a Xa-dependent way, inhibits VIIa/tissue factor activity, presumably by forming a quaternary Xa/LACI/VIIa/TF complex. It possesses an antithrombotic action and also the ability to associate with lipoproteins in plasma.
Molecular Weight:	56.3 kD
UniProt:	<a href="#">P10646</a>

## Application Details

Comment:	The yeast protein expression system is the most economical and efficient eukaryotic system for secretion and intracellular expression. A protein expressed by the mammalian cell system is of very high-quality and close to the natural protein. But the low expression level, the high cost of medium and the culture conditions restrict the promotion of mammalian cell expression systems. The yeast protein expression system serve as a eukaryotic system integrate the advantages of the mammalian cell expression system. A protein expressed by yeast system could be modiflicated such as glycosylation, acylation, phosphorylation and so on to ensure the native protein conformation. It can be used to produce protein material with high added value that is very close to the natural protein. Our proteins produced by yeast expression system has been used as raw materials for downstream preparation of monoclonal antibodies.
Restrictions:	For Research Use only

## Handling

Format:	Lyophilized
Concentration:	0.2-2 mg/mL
Buffer:	Tris-based buffer, 50 % glycerol
Handling Advice:	Repeated freezing and thawing is not recommended. Store working aliquots at 4 °C for up to one week
Storage:	-20 °C
Storage Comment:	Store at -20 °C for extended storage, conserve at -20 °C or -80 °C

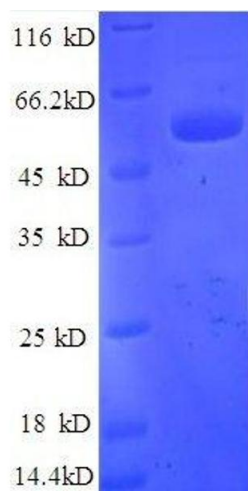
## Publications

Product cited in:	Vivacqua, Bonofiglio, Recchia, Musti, Picard, Andò, Maggiolini: "The G protein-coupled receptor
-------------------	---

GPR30 mediates the proliferative effects induced by 17beta-estradiol and hydroxytamoxifen in endometrial cancer cells." in: **Molecular endocrinology (Baltimore, Md.)**, Vol. 20, Issue 3, pp. 631-46, (2006) ([PubMed](#)).

Thomas, Pang, Filardo, Dong: "Identity of an estrogen membrane receptor coupled to a G protein in human breast cancer cells." in: **Endocrinology**, Vol. 146, Issue 2, pp. 624-32, (2005) ([PubMed](#)).

Images



SDS-PAGE

**Image 1.** Tissue Factor Pathway Inhibitor (Lipoprotein-Associated Coagulation Inhibitor) (TFPI) (AA 29-280), (partial) protein (GST tag)