

Datasheet for ABIN1047776

Slc25a1 Protein (AA 47-87, partial) (GST tag)[1 Image](#)[1 Publication](#)[Go to Product page](#)

Overview

Quantity:	100 µg
Target:	Slc25a1
Protein Characteristics:	AA 47-87, partial
Origin:	Human
Source:	Escherichia coli (E. coli)
Protein Type:	Recombinant
Purification tag / Conjugate:	This Slc25a1 protein is labelled with GST tag.
Application:	ELISA

Product Details

Sequence:	EYVKTQLQLD ERSHPPRYRG IGDCVRQTVR SHGVLGLYRG L
Characteristics:	Please inquire if you are interested in this recombinant protein expressed in E. coli, mammalian cells or by baculovirus infection. Be aware about differences in price and lead time.
Purity:	90 %

Target Details

Target:	Slc25a1
Alternative Name:	Tricarboxylate transport protein, mitochondrial protein (Slc25a1 Products)
Background:	Involved in citrate-H ⁺ /malate exchange. Important for the bioenergetics of hepatic cells as it provides a carbon source for fatty acid and sterol biosyntheses, and NAD ⁺ for the glycolytic pathway.

Target Details

Molecular Weight: 32.2 kD

UniProt: [P53007](#)

Application Details

Comment: The yeast protein expression system is the most economical and efficient eukaryotic system for secretion and intracellular expression. A protein expressed by the mammalian cell system is of very high-quality and close to the natural protein. But the low expression level, the high cost of medium and the culture conditions restrict the promotion of mammalian cell expression systems. The yeast protein expression system serve as a eukaryotic system integrate the advantages of the mammalian cell expression system. A protein expressed by yeast system could be modified such as glycosylation, acylation, phosphorylation and so on to ensure the native protein conformation. It can be used to produce protein material with high added value that is very close to the natural protein. Our proteins produced by yeast expression system has been used as raw materials for downstream preparation of monoclonal antibodies.

Restrictions: For Research Use only

Handling

Format: Lyophilized

Concentration: 0.2-2 mg/mL

Buffer: Tris-based buffer, 50 % glycerol

Handling Advice: Repeated freezing and thawing is not recommended. Store working aliquots at 4 °C for up to one week

Storage: -20 °C

Storage Comment: Store at -20 °C for extended storage, conserve at -20 °C or -80 °C

Publications

Product cited in: Lenz, Herten, Gerzer, Drummer: "Regulation of natriuretic peptide (urodilatin) release in a human kidney cell line." in: **Kidney international**, Vol. 55, Issue 1, pp. 91-9, (1999) ([PubMed](#)).

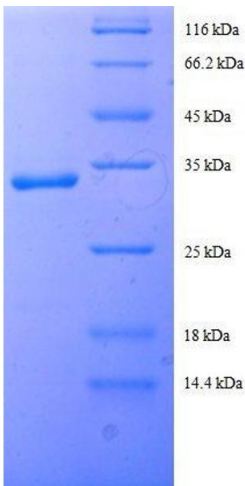
Klodt, Kuhn, Marx, Martin, Rösch, Forssmann, Adermann: "Synthesis, biological activity and isomerism of guanylate cyclase C-activating peptides guanylin and uroguanylin." in: **The journal of peptide research : official journal of the American Peptide Society**, Vol. 50, Issue 3, pp.

222-30, (1998) ([PubMed](#)).

Marx, Klodt, Meyer, Gerlach, Rösch, Forssmann, Adermann: "One peptide, two topologies: structure and interconversion dynamics of human uroguanylin isomers." in: **The journal of peptide research : official journal of the American Peptide Society**, Vol. 52, Issue 3, pp. 229-40, (1998) ([PubMed](#)).

Hess, Kuhn, Schulz-Knappe, Raida, Fuchs, Klodt, Adermann, Kaever, Cetin, Forssmann: "GCAP-II: isolation and characterization of the circulating form of human uroguanylin." in: **FEBS letters**, Vol. 374, Issue 1, pp. 34-8, (1995) ([PubMed](#)).

Images



SDS-PAGE

Image 1. Solute Carrier Family 25 (Mitochondrial Carrier, Citrate Transporter), Member 1 (Slc25a1) (AA 47-87), (partial) protein (GST tag)