

Datasheet for ABIN1047937

WDR1 Protein (AA 189-461, partial) (GST tag)[Go to Product page](#)**1** Image**3** Publications

Overview

Quantity:	100 µg
Target:	WDR1
Protein Characteristics:	AA 189-461, partial
Origin:	Human
Source:	Escherichia coli (E. coli)
Protein Type:	Recombinant
Purification tag / Conjugate:	This WDR1 protein is labelled with GST tag.
Application:	ELISA

Product Details

Sequence:	HKNGGKSYIY SGSHDGHINY WDSETGENDS FAGKGHTNQV SRMTVDESGQ LISCSMDDTV RYTSLMLRDY SGQGVMKLDV QPKCVAVGPG GYAVVVCIGQ IVLLKDQRKC FSDNPGYEP EVVAVHPGGD TVAIGGVDGN VRLYSILGTT LKDEGKLLEA KGPVTDVAYS HDGAFLAVCD ASKVVTVFSV ADGYSENNVF YGHHAKIVCL AWSPDNEHFA SGGMDMMVYV WTLSDPETRV KIQDAHRLHH VSSLAWLDEH TLVTTSHDAS VKE
Characteristics:	Please inquire if you are interested in this recombinant protein expressed in E. coli, mammalian cells or by baculovirus infection. Be aware about differences in price and lead time.
Purity:	90 %

Target Details

Target:	WDR1
---------	------

Target Details

Alternative Name:	WD repeat-containing protein 1 protein (WDR1 Products)
Background:	Induces disassembly of actin filaments in conjunction with ADF/cofilin family proteins By similarity.
Molecular Weight:	56.9 kD
UniProt:	075083
Pathways:	Sensory Perception of Sound

Application Details

Comment:	The yeast protein expression system is the most economical and efficient eukaryotic system for secretion and intracellular expression. A protein expressed by the mammalian cell system is of very high-quality and close to the natural protein. But the low expression level, the high cost of medium and the culture conditions restrict the promotion of mammalian cell expression systems. The yeast protein expression system serve as a eukaryotic system integrate the advantages of the mammalian cell expression system. A protein expressed by yeast system could be modified such as glycosylation, acylation, phosphorylation and so on to ensure the native protein conformation. It can be used to produce protein material with high added value that is very close to the natural protein. Our proteins produced by yeast expression system has been used as raw materials for downstream preparation of monoclonal antibodies.
Restrictions:	For Research Use only

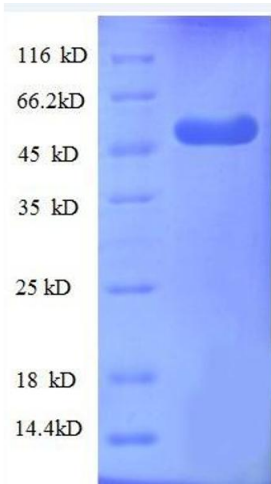
Handling

Format:	Lyophilized
Concentration:	0.2-2 mg/mL
Buffer:	Tris-based buffer, 50 % glycerol
Handling Advice:	Repeated freezing and thawing is not recommended. Store working aliquots at 4 °C for up to one week
Storage:	-20 °C
Storage Comment:	Store at -20 °C for extended storage, conserve at -20 °C or -80 °C

Publications

Product cited in:	Hartter, Khalafpour, Missbichler, Hawa, Woloszczuk: "Enzyme immunoassays for fragments
-------------------	----------------------------------------------------------------------------------------

(epitopes) of human proatrial natriuretic peptides." in: **Clinical chemistry and laboratory medicine : CCLM / FESCC**, Vol. 38, Issue 1, pp. 27-32, (2000) ([PubMed](#)).



SDS-PAGE

Image 1. WD Repeat Domain 1 (WDR1) (AA 189-461), (partial) protein (GST tag)