

Datasheet for ABIN1048446
anti-CHRM5 antibody (Cytoplasmic Domain)



[Go to Product page](#)

2 Images

Overview

Quantity:	50 µg
Target:	CHRM5
Binding Specificity:	Cytoplasmic Domain
Reactivity:	Human, Monkey
Host:	Rabbit
Clonality:	Polyclonal
Application:	Immunohistochemistry (IHC), Immunohistochemistry (Paraffin-embedded Sections) (IHC (p))

Product Details

Brand:	IHC-plus™
Immunogen:	Synthetic 16 amino acid peptide from 3rd cytoplasmic domain of human CHRM5. Percent identity with other species by BLAST analysis: Human, Gorilla, Monkey (100%), Gibbon (94%), Chimpanzee, Marmoset (88%), Dog, Bovine, Panda, Horse (81%). Type of Immunogen: Synthetic peptide
Specificity:	Human CHRM5. BLAST analysis of the peptide immunogen showed no homology with other human proteins.
Predicted Reactivity:	Percent identity with other species by BLAST analysis: Human, Gorilla, Monkey (100%) Gibbon (94%) Chimpanzee, Marmoset (88%) Dog, Bovine, Panda, Horse (81%).
Purification:	Immunoaffinity purified

Target Details

Target:	CHRM5
Alternative Name:	CHRM5 / M5 (CHRM5 Products)
Background:	Name/Gene ID: CHRM5 Subfamily: Acetylcholine Family: GPCR Synonyms: CHRM5, M5 muscarinic receptor, Muscarinic m5 receptor, Muscarinic receptor M5, HM5
Gene ID:	1133
Pathways:	Synaptic Membrane

Application Details

Application Notes:	Approved: IHC, IHC-P (6 µg/mL)
Comment:	Target Species of Antibody: Human
Assay Procedure:	The IHC-pro Immunohistochemistry Protocol

Tissue Preparation

Formalin fixation and embedding in paraffin wax

Tissue Sectioning

Make 4-µm sections and place on pre-cleaned and charged microscope slides.

Heat in a tissue-drying oven for 45 minutes at 60°C

Deparaffinization

Wash slides in 3 changes of xylene – 5 minutes each at room temperature.

Rehydration

Wash slides in 3 changes of 100% alcohol – 3 minutes each at room temperature.

Wash slides in 2 changes of 95% alcohol – 3 minutes each at room temperature.

Wash slides in 1 change of 80% alcohol – 3 minutes at room temperature.

Rinse slides in gentle running distilled water – 5 minutes at room temperature.

Antigen retrieval

Steam slides in 0.01 M sodium citrate buffer, pH 6.0 at 99-100°C - 20 minutes

Remove from heat and let stand at room temperature in buffer - 20 minutes

Rinse in 1X TBS with Tween (TBST) – 1 minute at room temperature.

Immunostaining

Do not allow tissues to dry at any time during the staining procedure.

Apply a universal protein block – 20 minutes at room temperature.

Drain protein block from slides, apply diluted primary antibody – 45 minutes at room temperature.

Rinse slides in 1X TBST - 1 minute at room temperature.

Apply a biotinylated secondary antibody (specific to the host of the primary antibody) - 30 minutes at room temperature.

Rinse slides 1X TBST – 1 minute at room temperature.

Apply alkaline phosphatase streptavidin – 30 minutes at room temperature.

Rinse slides in 1X TBST - 1 minute at room temperature.

Apply alkaline phosphatase chromogen substrate – 30 minutes at room temperature.

Wash slides in distilled water – 1 minute at room temperature.

Dehydrate

This method should only be used if the chromogen substrate is alcohol insoluble.

Wash slides in 2 changes of 80% alcohol – 1 minute each at room temperature.

Wash slides in 2 changes of 95% alcohol – 1 minute each at room temperature.

Wash slides in 3 changes of 100% alcohol – 1 minute each at room temperature.

Wash slides in 3 changes of xylene – 1 minute each at room temperature.

Apply coverslip

Restrictions: For Research Use only

Handling

Format: Liquid

Concentration: Lot specific

Buffer: PBS, less than 0.1 % sodium azide.

Preservative: Sodium azide

Precaution of Use: This product contains Sodium azide: a POISONOUS AND HAZARDOUS SUBSTANCE which should be handled by trained staff only.

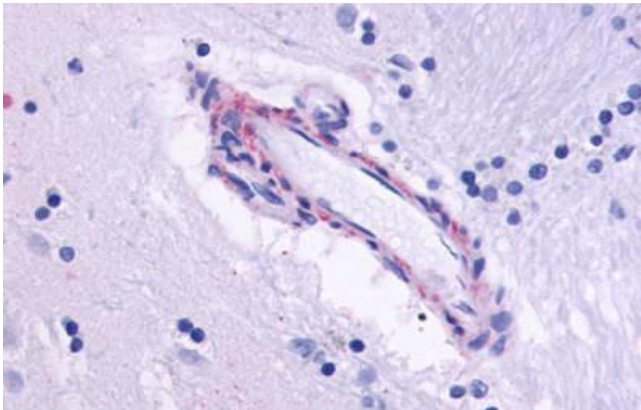
Handling

Storage: 4 °C, -20 °C

Storage Comment: Aliquot and store undiluted at -20°C or below for up to 1 year. Can be stored undiluted at 4°C for up to 1 month. Avoid freeze-thaw cycles.

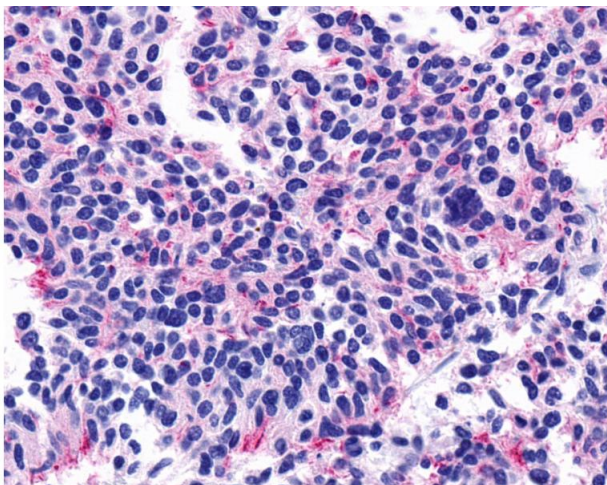
Expiry Date: 12 months

Images



Immunohistochemistry

Image 1. Anti-CHRM5 antibody ABIN1048446 IHC staining of human brain, vessel. Immunohistochemistry of formalin-fixed, paraffin-embedded tissue after heat-induced antigen retrieval.



Immunohistochemistry

Image 2. Anti-CHRM5 / M5 antibody IHC of human Lung, Small Cell Carcinoma. Immunohistochemistry of formalin-fixed, paraffin-embedded tissue after heat-induced antigen retrieval.