

Datasheet for ABIN1048461
anti-CRHR1 antibody (N-Term)

3 Images



[Go to Product page](#)

Overview

Quantity:	50 µg
Target:	CRHR1
Binding Specificity:	N-Term
Reactivity:	Human, Rat, Monkey
Host:	Rabbit
Clonality:	Polyclonal
Conjugate:	This CRHR1 antibody is un-conjugated
Application:	Immunohistochemistry (IHC), Immunohistochemistry (Paraffin-embedded Sections) (IHC (p))

Product Details

Brand:	IHC-plus™
Immunogen:	Synthetic 18 amino acid peptide from N-terminal extracellular domain of human CRF1. Percent identity with other species by BLAST analysis: Human, Gorilla, Gibbon, Monkey, Marmoset, Rat (100%), Mouse, Hamster, Elephant, Horse (94%), Dog, Bat, Bovine, Panda, Pig, Lizard, Zebrafish (89%), Opossum, Turkey, Frog, Trout (83%). Type of Immunogen: Synthetic peptide
Specificity:	Human CRF1. BLAST analysis of the peptide immunogen showed no homology with other human proteins.
Predicted Reactivity:	Percent identity with other species by BLAST analysis: Human, Gorilla, Gibbon, Monkey, Marmoset, Rat (100%) Mouse, Hamster, Elephant, Horse (94%) Dog, Bat, Bovine, Panda, Pig,

Product Details

Lizard, Zebrafish (89%) Opossum, Turkey, Frog, Trout (83%).

Purification: Immunoaffinity purified

Target Details

Target: CRHR1

Alternative Name: CRFR1 / CRHR1 ([CRHR1 Products](#))

Background: Name/Gene ID: CRHR1
Subfamily: Corticotropin releasing factor
Family: GPCR

Synonyms: CRHR1, CRF-R-1, CRFR, CRHR1f, Crf receptor 1, CRH-R1, CRF-R, CRF1, CRFR-1, Crf receptor type 1, Crf receptor type 1, Crf type 1, CRF-R1, Crf1 receptor, CRFR1, CRH-R-1, CRH-R1h, CRHR, CRHR1L

Gene ID: 1394

Pathways: [Hormone Transport](#), [cAMP Metabolic Process](#), [Myometrial Relaxation and Contraction](#), [Regulation of Leukocyte Mediated Immunity](#), [Positive Regulation of Immune Effector Process](#), [Feeding Behaviour](#), [Negative Regulation of Transporter Activity](#)

Application Details

Application Notes: Approved: IHC, IHC-P (21 µg/mL)

Comment: Target Species of Antibody: Human

Assay Procedure: **The IHC-pro Immunohistochemistry Protocol**

Tissue Preparation

Formalin fixation and embedding in paraffin wax

Tissue Sectioning

Make 4-µm sections and place on pre-cleaned and charged microscope slides.

Heat in a tissue-drying oven for 45 minutes at 60°C

Deparaffinization

Wash slides in 3 changes of xylene – 5 minutes each at room temperature.

Rehydration

Wash slides in 3 changes of 100% alcohol – 3 minutes each at room temperature.

Wash slides in 2 changes of 95% alcohol – 3 minutes each at room temperature.

Wash slides in 1 change of 80% alcohol – 3 minutes at room temperature.

Rinse slides in gentle running distilled water – 5 minutes at room temperature.

Antigen retrieval

Steam slides in 0.01 M sodium citrate buffer, pH 6.0 at 99-100°C - 20 minutes

Remove from heat and let stand at room temperature in buffer - 20 minutes

Rinse in 1X TBS with Tween (TBST) – 1 minute at room temperature.

Immunostaining

Do not allow tissues to dry at any time during the staining procedure.

Apply a universal protein block – 20 minutes at room temperature.

Drain protein block from slides, apply diluted primary antibody – 45 minutes at room temperature.

Rinse slides in 1X TBST - 1 minute at room temperature.

Apply a biotinylated secondary antibody (specific to the host of the primary antibody) - 30 minutes at room temperature.

Rinse slides 1X TBST – 1 minute at room temperature.

Apply alkaline phosphatase streptavidin – 30 minutes at room temperature.

Rinse slides in 1X TBST - 1 minute at room temperature.

Apply alkaline phosphatase chromogen substrate – 30 minutes at room temperature.

Wash slides in distilled water – 1 minute at room temperature.

Dehydrate

This method should only be used if the chromogen substrate is alcohol insoluble.

Wash slides in 2 changes of 80% alcohol – 1 minute each at room temperature.

Wash slides in 2 changes of 95% alcohol – 1 minute each at room temperature.

Wash slides in 3 changes of 100% alcohol – 1 minute each at room temperature.

Wash slides in 3 changes of xylene – 1 minute each at room temperature.

Apply coverslip

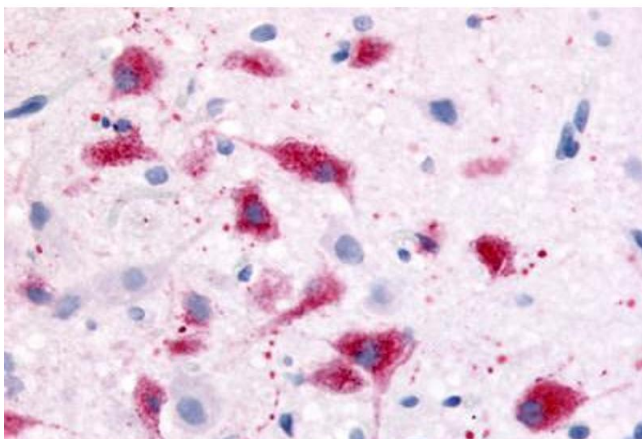
Restrictions:

For Research Use only

Handling

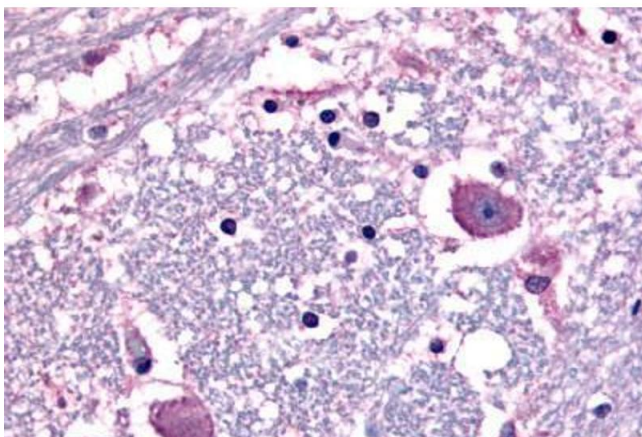
Format:	Liquid
Concentration:	Lot specific
Buffer:	PBS, less than 0.1 % sodium azide.
Preservative:	Sodium azide
Precaution of Use:	This product contains Sodium azide: a POISONOUS AND HAZARDOUS SUBSTANCE which should be handled by trained staff only.
Storage:	4 °C,-20 °C
Storage Comment:	Aliquot and store undiluted at -20°C or below for up to 1 year. Can be stored undiluted at 4°C for up to 1 month. Avoid freeze-thaw cycles.
Expiry Date:	12 months

Images



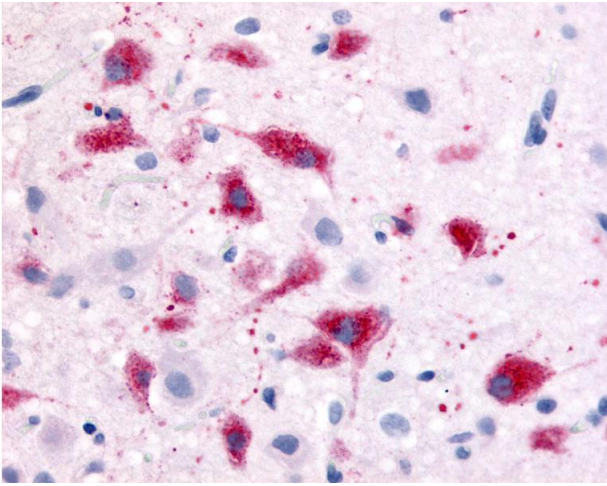
Immunohistochemistry

Image 1. Anti-CRF1 antibody ABIN1048461 IHC staining of rat hypothalamus. Immunohistochemistry of formalin-fixed, paraffin-embedded tissue after heat-induced antigen retrieval.



Immunohistochemistry

Image 2. Anti-CRF1 antibody ABIN1048461 IHC staining of human human brain, neurons and glia. Immunohistochemistry of formalin-fixed, paraffin-embedded tissue after heat-induced antigen retrieval.



Immunohistochemistry

Image 3. Anti-CRF1 antibody IHC of rat hypothalamus. Immunohistochemistry of formalin-fixed, paraffin-embedded tissue after heat-induced antigen retrieval.