



[Go to Product page](#)

Datasheet for ABIN1048664

## anti-GLP1R antibody (N-Term)

### 2 Images

#### Overview

Quantity:	50 µg
Target:	GLP1R
Binding Specificity:	N-Term
Reactivity:	Human, Mouse
Host:	Rabbit
Clonality:	Polyclonal
Application:	Immunohistochemistry (IHC), Immunofluorescence (IF), Immunohistochemistry (Paraffin-embedded Sections) (IHC (p)), Immunohistochemistry (Frozen Sections) (IHC (fro))

#### Product Details

Brand:	IHC-plus™
Immunogen:	Synthetic 16 amino acid peptide from N-terminal extracellular domain of human GLP1R. Percent identity with other species by BLAST analysis: Human, Gorilla, Gibbon, Monkey (100%), Marmoset, Mouse, Rat, Sheep, Bovine, Hamster, Elephant, Rabbit, Pig (94%).  Type of Immunogen: Synthetic peptide
Specificity:	Human GLP1R. BLAST analysis of the peptide immunogen showed no homology with other human proteins.
Purification:	Immunoaffinity purified

## Target Details

---

Target:	GLP1R
Alternative Name:	GLP1R/GLP-1R/GLP-1 Receptor ( <a href="#">GLP1R Products</a> )
Background:	Name/Gene ID: GLP1R Subfamily: Glucagon Family: GPCR  Synonyms: GLP1R, GLP-1-R, GLP-1 receptor, GLP-1R, GLP-I receptor, Glp1 receptor
Gene ID:	2740
Pathways:	<a href="#">Positive Regulation of Peptide Hormone Secretion</a> , <a href="#">Hormone Transport</a> , <a href="#">cAMP Metabolic Process</a> , <a href="#">Feeding Behaviour</a>

## Application Details

---

Application Notes:	Approved: IF, IHC, IHC-Fr, IHC-P (3 - 4 µg/mL)
Comment:	Target Species of Antibody: Human
Assay Procedure:	<b>The IHC-pro Immunohistochemistry Protocol</b>

### Tissue Preparation

Formalin fixation and embedding in paraffin wax

### Tissue Sectioning

Make 4-µm sections and place on pre-cleaned and charged microscope slides.

Heat in a tissue-drying oven for 45 minutes at 60°C

Deparaffinization

Wash slides in 3 changes of xylene – 5 minutes each at room temperature.

### Rehydration

Wash slides in 3 changes of 100% alcohol – 3 minutes each at room temperature.

Wash slides in 2 changes of 95% alcohol – 3 minutes each at room temperature.

Wash slides in 1 change of 80% alcohol – 3 minutes at room temperature.

Rinse slides in gentle running distilled water – 5 minutes at room temperature.

### Antigen retrieval

Steam slides in 0.01 M sodium citrate buffer, pH 6.0 at 99-100°C - 20 minutes

Remove from heat and let stand at room temperature in buffer - 20 minutes

Rinse in 1X TBS with Tween (TBST) – 1 minute at room temperature.

### **Immunostaining**

Do not allow tissues to dry at any time during the staining procedure.

Apply a universal protein block – 20 minutes at room temperature.

Drain protein block from slides, apply diluted primary antibody – 45 minutes at room temperature.

Rinse slides in 1X TBST - 1 minute at room temperature.

Apply a biotinylated secondary antibody (specific to the host of the primary antibody) - 30 minutes at room temperature.

Rinse slides 1X TBST – 1 minute at room temperature.

Apply alkaline phosphatase streptavidin – 30 minutes at room temperature.

Rinse slides in 1X TBST - 1 minute at room temperature.

Apply alkaline phosphatase chromogen substrate – 30 minutes at room temperature.

Wash slides in distilled water – 1 minute at room temperature.

### **Dehydrate**

This method should only be used if the chromogen substrate is alcohol insoluble.

Wash slides in 2 changes of 80% alcohol – 1 minute each at room temperature.

Wash slides in 2 changes of 95% alcohol – 1 minute each at room temperature.

Wash slides in 3 changes of 100% alcohol – 1 minute each at room temperature.

Wash slides in 3 changes of xylene – 1 minute each at room temperature.

Apply coverslip

---

Restrictions: For Research Use only

## Handling

---

Format: Liquid

Concentration: Lot specific

Buffer: PBS, less than 0.1 % sodium azide.

Preservative: Sodium azide

Precaution of Use: This product contains Sodium azide: a POISONOUS AND HAZARDOUS SUBSTANCE which should be handled by trained staff only.

---

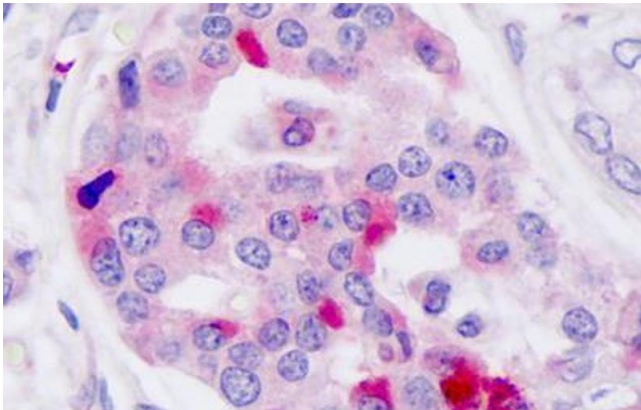
## Handling

Storage: 4 °C,-20 °C

Storage Comment: Aliquot and store undiluted at -20°C or below for up to 1 year. Can be stored undiluted at 4°C for up to 1 month. Avoid freeze-thaw cycles.

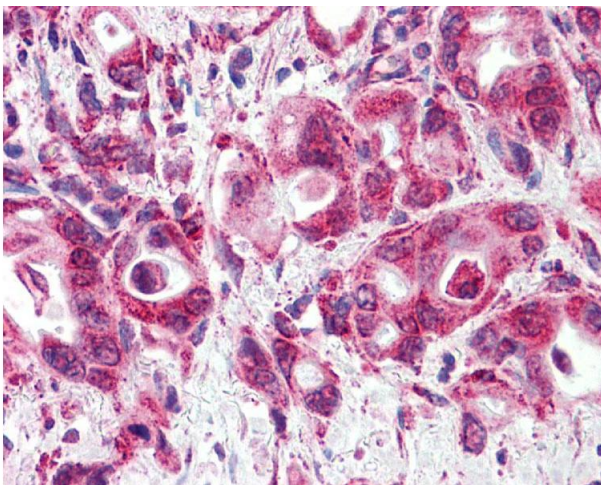
Expiry Date: 12 months

## Images



### Immunohistochemistry

**Image 1.** Anti-GLP-1 Receptor / GLP1R antibody IHC staining of human pancreas, islet of Langerhans. Immunohistochemistry of formalin-fixed, paraffin-embedded tissue after heat-induced antigen retrieval. Antibody ABIN1048664 dilution 41367 ug/ml.



### Immunohistochemistry

**Image 2.** Anti-GLP1R/GLP-1R/GLP-1 Receptor antibody IHC of human Pancreas, Carcinoma. Immunohistochemistry of formalin-fixed, paraffin-embedded tissue after heat-induced antigen retrieval.