

Datasheet for ABIN1048680

anti-G Protein-Coupled Receptor 1 antibody (Cytoplasmic Domain)[Go to Product page](#)**2** Images

Overview

Quantity:	50 µg
Target:	G Protein-Coupled Receptor 1 (GPR1)
Binding Specificity:	Cytoplasmic Domain
Reactivity:	Human, Monkey
Host:	Rabbit
Clonality:	Polyclonal
Conjugate:	This G Protein-Coupled Receptor 1 antibody is un-conjugated
Application:	Immunohistochemistry (IHC), Immunohistochemistry (Paraffin-embedded Sections) (IHC (p))

Product Details

Brand:	IHC-plus™
Immunogen:	Synthetic 15 amino acid peptide from 2nd cytoplasmic domain of human GPR1. Percent identity with other species by BLAST analysis: Human, Gorilla, Gibbon, Monkey (100%), Hamster, Dog, Rabbit (93%), Marmoset, Mouse, Rat, Elephant, Panda (87%), Bovine, Horse, Pig, Opossum (80%). Type of Immunogen: Synthetic peptide
Specificity:	Human GPR1. BLAST analysis of the peptide immunogen showed no homology with other human proteins, except LONRF2 (47 %).
Predicted Reactivity:	Percent identity with other species by BLAST analysis: Human, Gorilla, Gibbon, Monkey (100%) Hamster, Dog, Rabbit (93%) Marmoset, Mouse, Rat, Elephant, Panda (87%) Bovine, Horse, Pig,

Product Details

Opossum (80%).

Purification: Immunoaffinity purified

Target Details

Target: G Protein-Coupled Receptor 1 (GPR1)

Alternative Name: GPR1 ([GPR1 Products](#))

Background: Name/Gene ID: GPR1

Subfamily: Orphan-A

Family: GPCR

Synonyms: GPR1, G-protein coupled receptor 1, G protein-coupled receptor 1, Gpr-1

Gene ID: 2825

Pathways: [Steroid Hormone Mediated Signaling Pathway](#), [Regulation of Carbohydrate Metabolic Process](#)

Application Details

Application Notes: Approved: IHC, IHC-P (15 - 20 µg/mL)

Comment: Target Species of Antibody: Human

Assay Procedure: **The IHC-pro Immunohistochemistry Protocol**

Tissue Preparation

Formalin fixation and embedding in paraffin wax

Tissue Sectioning

Make 4-µm sections and place on pre-cleaned and charged microscope slides.

Heat in a tissue-drying oven for 45 minutes at 60°C

Deparaffinization

Wash slides in 3 changes of xylene – 5 minutes each at room temperature.

Rehydration

Wash slides in 3 changes of 100% alcohol – 3 minutes each at room temperature.

Wash slides in 2 changes of 95% alcohol – 3 minutes each at room temperature.

Wash slides in 1 change of 80% alcohol – 3 minutes at room temperature.

Rinse slides in gentle running distilled water – 5 minutes at room temperature.

Antigen retrieval

Steam slides in 0.01 M sodium citrate buffer, pH 6.0 at 99-100°C - 20 minutes

Remove from heat and let stand at room temperature in buffer - 20 minutes

Rinse in 1X TBS with Tween (TBST) – 1 minute at room temperature.

Immunostaining

Do not allow tissues to dry at any time during the staining procedure.

Apply a universal protein block – 20 minutes at room temperature.

Drain protein block from slides, apply diluted primary antibody – 45 minutes at room temperature.

Rinse slides in 1X TBST - 1 minute at room temperature.

Apply a biotinylated secondary antibody (specific to the host of the primary antibody) - 30 minutes at room temperature.

Rinse slides 1X TBST – 1 minute at room temperature.

Apply alkaline phosphatase streptavidin – 30 minutes at room temperature.

Rinse slides in 1X TBST - 1 minute at room temperature.

Apply alkaline phosphatase chromogen substrate – 30 minutes at room temperature.

Wash slides in distilled water – 1 minute at room temperature.

Dehydrate

This method should only be used if the chromogen substrate is alcohol insoluble.

Wash slides in 2 changes of 80% alcohol – 1 minute each at room temperature.

Wash slides in 2 changes of 95% alcohol – 1 minute each at room temperature.

Wash slides in 3 changes of 100% alcohol – 1 minute each at room temperature.

Wash slides in 3 changes of xylene – 1 minute each at room temperature.

Apply coverslip

Restrictions:	For Research Use only
---------------	-----------------------

Handling

Format:	Liquid
---------	--------

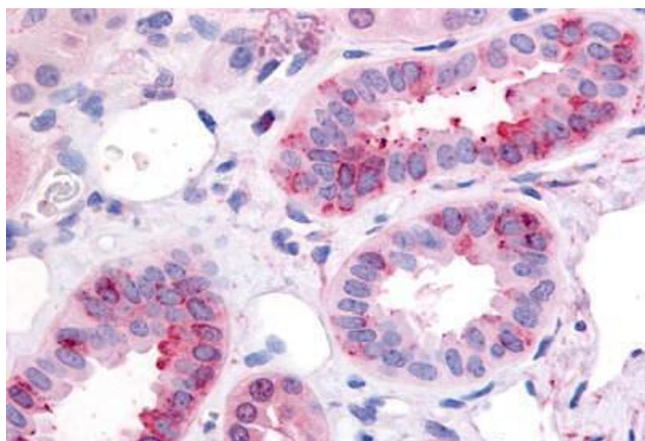
Concentration:	Lot specific
----------------	--------------

Buffer:	PBS, less than 0.1 % sodium azide.
---------	------------------------------------

Handling

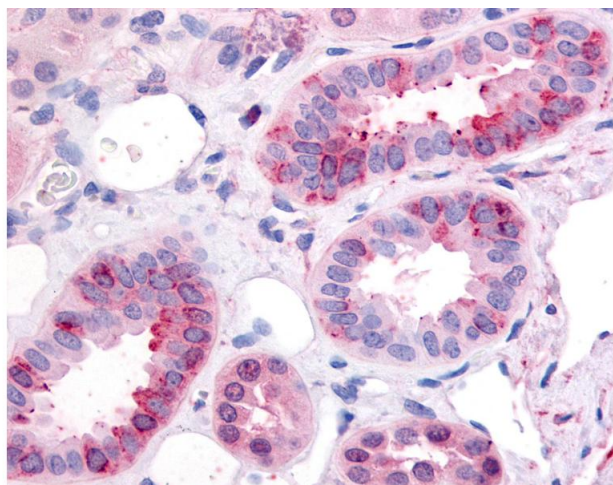
Preservative:	Sodium azide
Precaution of Use:	This product contains Sodium azide: a POISONOUS AND HAZARDOUS SUBSTANCE which should be handled by trained staff only.
Storage:	4 °C,-20 °C
Storage Comment:	Aliquot and store undiluted at -20°C or below for up to 1 year. Can be stored undiluted at 4°C for up to 1 month. Avoid freeze-thaw cycles.
Expiry Date:	12 months

Images



Immunohistochemistry

Image 1. Anti-GPR1 antibody ABIN1048680 IHC staining of human kidney. Immunohistochemistry of formalin-fixed, paraffin-embedded tissue after heat-induced antigen retrieval.



Immunohistochemistry

Image 2. Anti-GPR1 antibody IHC of human kidney. Immunohistochemistry of formalin-fixed, paraffin-embedded tissue after heat-induced antigen retrieval.