

Datasheet for ABIN1048797  
**anti-GPR31 antibody (Extracellular Domain)**



[Go to Product page](#)

2 Images

## Overview

Quantity:	50 µg
Target:	GPR31
Binding Specificity:	Extracellular Domain
Reactivity:	Human
Host:	Rabbit
Clonality:	Polyclonal
Conjugate:	This GPR31 antibody is un-conjugated
Application:	Immunohistochemistry (Paraffin-embedded Sections) (IHC (p)), Immunohistochemistry (IHC)

## Product Details

Brand:	IHC-plus™
Immunogen:	Synthetic 19 amino acid peptide from 2nd extracellular domain of human GPR31. Percent identity with other species by BLAST analysis: Human, Gorilla (100%).  Type of Immunogen: Synthetic peptide
Specificity:	Human GPR31. BLAST analysis of the peptide immunogen showed no homology with other human proteins.
Predicted Reactivity:	Percent identity with other species by BLAST analysis: Human, Gorilla (100%).
Purification:	Immunoaffinity purified

## Target Details

---

Target:	GPR31
Alternative Name:	GPR31 ( <a href="#">GPR31 Products</a> )
Background:	Name/Gene ID: GPR31 Subfamily: Orphan-A Family: GPCR  Synonyms: GPR31, 12-(S)-HETE acid receptor, 12-(S)-HETE receptor, 12-HETER, G-protein coupled receptor 31, HETER, HETER1, TCP10C, G protein-coupled receptor 31
Gene ID:	2853

## Application Details

---

Application Notes:	Approved: IHC, IHC-P (2 - 4 µg/mL)
Comment:	Target Species of Antibody: Human
Assay Procedure:	<b>The IHC-pro Immunohistochemistry Protocol</b>

### Tissue Preparation

Formalin fixation and embedding in paraffin wax

### Tissue Sectioning

Make 4-µm sections and place on pre-cleaned and charged microscope slides.

Heat in a tissue-drying oven for 45 minutes at 60°C

Deparaffinization

Wash slides in 3 changes of xylene – 5 minutes each at room temperature.

### Rehydration

Wash slides in 3 changes of 100% alcohol – 3 minutes each at room temperature.

Wash slides in 2 changes of 95% alcohol – 3 minutes each at room temperature.

Wash slides in 1 change of 80% alcohol – 3 minutes at room temperature.

Rinse slides in gentle running distilled water – 5 minutes at room temperature.

### Antigen retrieval

Steam slides in 0.01 M sodium citrate buffer, pH 6.0 at 99-100°C - 20 minutes

Remove from heat and let stand at room temperature in buffer - 20 minutes

Rinse in 1X TBS with Tween (TBST) – 1 minute at room temperature.

### **Immunostaining**

Do not allow tissues to dry at any time during the staining procedure.

Apply a universal protein block – 20 minutes at room temperature.

Drain protein block from slides, apply diluted primary antibody – 45 minutes at room temperature.

Rinse slides in 1X TBST - 1 minute at room temperature.

Apply a biotinylated secondary antibody (specific to the host of the primary antibody) - 30 minutes at room temperature.

Rinse slides 1X TBST – 1 minute at room temperature.

Apply alkaline phosphatase streptavidin – 30 minutes at room temperature.

Rinse slides in 1X TBST - 1 minute at room temperature.

Apply alkaline phosphatase chromogen substrate – 30 minutes at room temperature.

Wash slides in distilled water – 1 minute at room temperature.

### **Dehydrate**

This method should only be used if the chromogen substrate is alcohol insoluble.

Wash slides in 2 changes of 80% alcohol – 1 minute each at room temperature.

Wash slides in 2 changes of 95% alcohol – 1 minute each at room temperature.

Wash slides in 3 changes of 100% alcohol – 1 minute each at room temperature.

Wash slides in 3 changes of xylene – 1 minute each at room temperature.

Apply coverslip

---

Restrictions: For Research Use only

## Handling

---

Format: Liquid

Concentration: Lot specific

Buffer: PBS, less than 0.1 % sodium azide.

Preservative: Sodium azide

Precaution of Use: This product contains Sodium azide: a POISONOUS AND HAZARDOUS SUBSTANCE which should be handled by trained staff only.

Storage: 4 °C,-20 °C

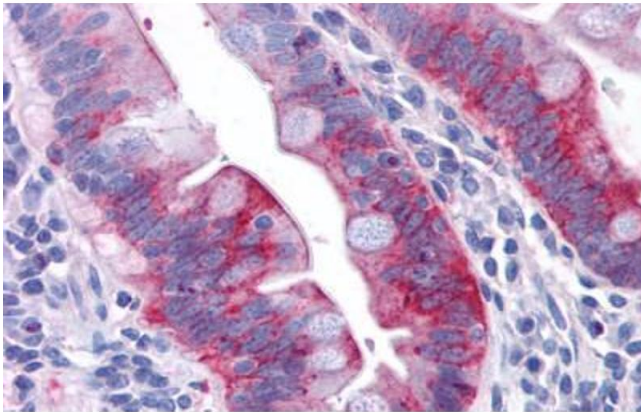
---

## Handling

Storage Comment: Aliquot and store undiluted at -20°C or below for up to 1 year. Can be stored undiluted at 4°C for up to 1 month. Avoid freeze-thaw cycles.

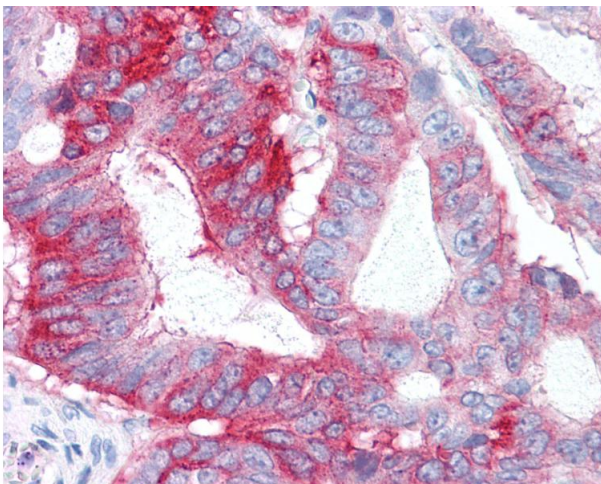
Expiry Date: 12 months

## Images



### Immunohistochemistry

**Image 1.** Anti-GPR31 antibody ABIN1048797 IHC staining of human small intestine, epithelium. Immunohistochemistry of formalin-fixed, paraffin-embedded tissue after heat-induced antigen retrieval.



### Immunohistochemistry

**Image 2.** Anti-GPR31 antibody IHC of human Colon, Carcinoma. Immunohistochemistry of formalin-fixed, paraffin-embedded tissue after heat-induced antigen retrieval.