

Datasheet for ABIN1049280
anti-PYGL antibody (C-Term)

2 Images



[Go to Product page](#)

Overview

Quantity:	50 µg
Target:	PYGL
Binding Specificity:	C-Term
Reactivity:	Human, Monkey
Host:	Rabbit
Clonality:	Polyclonal
Conjugate:	This PYGL antibody is un-conjugated
Application:	Immunohistochemistry (IHC), Immunohistochemistry (Paraffin-embedded Sections) (IHC (p))

Product Details

Brand:	IHC-plus™
Immunogen:	Synthetic 17 amino acid peptide from C-terminus of human PYGL. Percent identity with other species by BLAST analysis: Human, Gorilla, Gibbon, Monkey, Marmoset (100%). Type of Immunogen: Synthetic peptide
Specificity:	Human PYGL. BLAST analysis of the peptide immunogen showed no homology with other human proteins.
Predicted Reactivity:	Percent identity with other species by BLAST analysis: Human, Gorilla, Gibbon, Monkey, Marmoset (100%).
Purification:	Immunoaffinity purified

Target Details

Target:	PYGL
Alternative Name:	PYGL (PYGL Products)
Background:	Name/Gene ID: PYGL Synonyms: PYGL, GPLL, Phosphorylase, glycogen liver, Phosphorylase, glycogen, liver, GSD6
Gene ID:	5836
Pathways:	Carbohydrate Homeostasis , Cellular Glucan Metabolic Process

Application Details

Application Notes:	Approved: IHC, IHC-P (10 µg/mL)
Comment:	Target Species of Antibody: Human
Assay Procedure:	The IHC-pro Immunohistochemistry Protocol

Tissue Preparation

Formalin fixation and embedding in paraffin wax

Tissue Sectioning

Make 4-µm sections and place on pre-cleaned and charged microscope slides.

Heat in a tissue-drying oven for 45 minutes at 60°C

Deparaffinization

Wash slides in 3 changes of xylene – 5 minutes each at room temperature.

Rehydration

Wash slides in 3 changes of 100% alcohol – 3 minutes each at room temperature.

Wash slides in 2 changes of 95% alcohol – 3 minutes each at room temperature.

Wash slides in 1 change of 80% alcohol – 3 minutes at room temperature.

Rinse slides in gentle running distilled water – 5 minutes at room temperature.

Antigen retrieval

Steam slides in 0.01 M sodium citrate buffer, pH 6.0 at 99-100°C - 20 minutes

Remove from heat and let stand at room temperature in buffer - 20 minutes

Rinse in 1X TBS with Tween (TBST) – 1 minute at room temperature.

Immunostaining

Do not allow tissues to dry at any time during the staining procedure.

Apply a universal protein block – 20 minutes at room temperature.

Drain protein block from slides, apply diluted primary antibody – 45 minutes at room temperature.

Rinse slides in 1X TBST - 1 minute at room temperature.

Apply a biotinylated secondary antibody (specific to the host of the primary antibody) - 30 minutes at room temperature.

Rinse slides 1X TBST – 1 minute at room temperature.

Apply alkaline phosphatase streptavidin – 30 minutes at room temperature.

Rinse slides in 1X TBST - 1 minute at room temperature.

Apply alkaline phosphatase chromogen substrate – 30 minutes at room temperature.

Wash slides in distilled water – 1 minute at room temperature.

Dehydrate

This method should only be used if the chromogen substrate is alcohol insoluble.

Wash slides in 2 changes of 80% alcohol – 1 minute each at room temperature.

Wash slides in 2 changes of 95% alcohol – 1 minute each at room temperature.

Wash slides in 3 changes of 100% alcohol – 1 minute each at room temperature.

Wash slides in 3 changes of xylene – 1 minute each at room temperature.

Apply coverslip

Restrictions: For Research Use only

Handling

Format: Liquid

Concentration: Lot specific

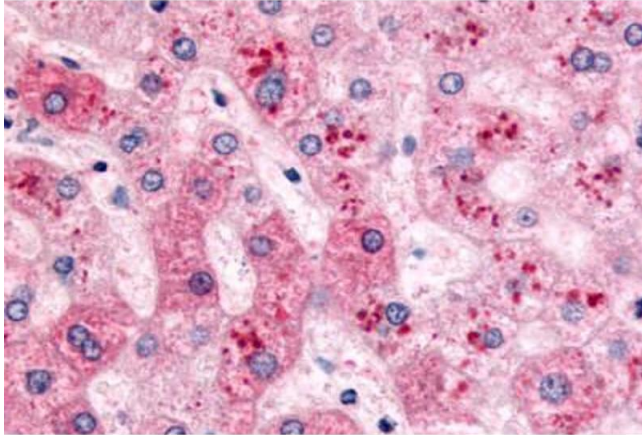
Buffer: PBS, less than 0.1 % sodium azide.

Preservative: Sodium azide

Precaution of Use: This product contains Sodium azide: a POISONOUS AND HAZARDOUS SUBSTANCE which should be handled by trained staff only.

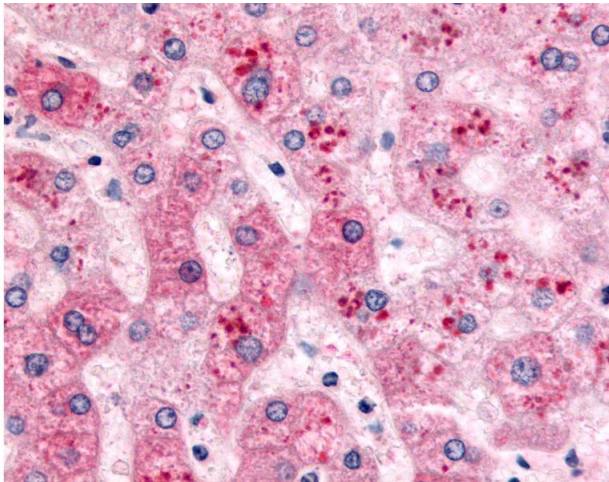
Storage: 4 °C, -20 °C

Storage Comment: Aliquot and store undiluted at -20°C or below for up to 1 year. Can be stored undiluted at 4°C for up to 1 month. Avoid freeze-thaw cycles.



Immunohistochemistry

Image 1. Anti-PYGL antibody ABIN1049280 IHC staining of human liver. Immunohistochemistry of formalin-fixed, paraffin-embedded tissue after heat-induced antigen retrieval.



Immunohistochemistry

Image 2. Anti-PYGL antibody IHC of human liver. Immunohistochemistry of formalin-fixed, paraffin-embedded tissue after heat-induced antigen retrieval.