



[Go to Product page](#)

Datasheet for ABIN1049304
anti-RXFP1 antibody (C-Term)

3 Images

Overview

Quantity:	50 µg
Target:	RXFP1
Binding Specificity:	C-Term
Reactivity:	Human
Host:	Rabbit
Clonality:	Polyclonal
Application:	Immunohistochemistry (IHC), Immunohistochemistry (Paraffin-embedded Sections) (IHC (p))

Product Details

Brand:	IHC-plus™
Immunogen:	Synthetic 19 amino acid peptide from C-terminus of human RXFP1. Percent identity with other species by BLAST analysis: Human, Gorilla, Orangutan (100%), Gibbon, Monkey (95%), Marmoset (84%). Type of Immunogen: Synthetic peptide
Specificity:	Human RXFP1. BLAST analysis of the peptide immunogen showed no homology with other human proteins, except ANGPT2 (47 %).
Predicted Reactivity:	Percent identity with other species by BLAST analysis: Human, Gorilla, Orangutan (100%) Gibbon, Monkey (95%) Marmoset (84%).
Purification:	Immunoaffinity purified

Target Details

Target: RXFP1

Alternative Name: RXFP1/ LGR7 ([RXFP1 Products](#))

Background: Name/Gene ID: RXFP1
Subfamily: Relaxin
Family: GPCR

Synonyms: RXFP1, LGR7, LGR7.1, LGR7.10, LGR7.2, RXFPR1, Relaxin receptor 1

Gene ID: 59350

Pathways: [Myometrial Relaxation and Contraction](#)

Application Details

Application Notes: Approved: IHC, IHC-P (20 µg/mL)

Comment: Target Species of Antibody: Human

Assay Procedure: **The IHC-pro Immunohistochemistry Protocol**

Tissue Preparation

Formalin fixation and embedding in paraffin wax

Tissue Sectioning

Make 4-µm sections and place on pre-cleaned and charged microscope slides.

Heat in a tissue-drying oven for 45 minutes at 60°C

Deparaffinization

Wash slides in 3 changes of xylene – 5 minutes each at room temperature.

Rehydration

Wash slides in 3 changes of 100% alcohol – 3 minutes each at room temperature.

Wash slides in 2 changes of 95% alcohol – 3 minutes each at room temperature.

Wash slides in 1 change of 80% alcohol – 3 minutes at room temperature.

Rinse slides in gentle running distilled water – 5 minutes at room temperature.

Antigen retrieval

Steam slides in 0.01 M sodium citrate buffer, pH 6.0 at 99-100°C - 20 minutes

Remove from heat and let stand at room temperature in buffer - 20 minutes

Rinse in 1X TBS with Tween (TBST) – 1 minute at room temperature.

Immunostaining

Do not allow tissues to dry at any time during the staining procedure.

Apply a universal protein block – 20 minutes at room temperature.

Drain protein block from slides, apply diluted primary antibody – 45 minutes at room temperature.

Rinse slides in 1X TBST - 1 minute at room temperature.

Apply a biotinylated secondary antibody (specific to the host of the primary antibody) - 30 minutes at room temperature.

Rinse slides 1X TBST – 1 minute at room temperature.

Apply alkaline phosphatase streptavidin – 30 minutes at room temperature.

Rinse slides in 1X TBST - 1 minute at room temperature.

Apply alkaline phosphatase chromogen substrate – 30 minutes at room temperature.

Wash slides in distilled water – 1 minute at room temperature.

Dehydrate

This method should only be used if the chromogen substrate is alcohol insoluble.

Wash slides in 2 changes of 80% alcohol – 1 minute each at room temperature.

Wash slides in 2 changes of 95% alcohol – 1 minute each at room temperature.

Wash slides in 3 changes of 100% alcohol – 1 minute each at room temperature.

Wash slides in 3 changes of xylene – 1 minute each at room temperature.

Apply coverslip

Restrictions: For Research Use only

Handling

Format: Liquid

Concentration: Lot specific

Buffer: PBS, less than 0.1 % sodium azide.

Preservative: Sodium azide

Precaution of Use: This product contains Sodium azide: a POISONOUS AND HAZARDOUS SUBSTANCE which should be handled by trained staff only.

Storage: 4 °C,-20 °C

Handling

Storage Comment: Aliquot and store undiluted at -20°C or below for up to 1 year. Can be stored undiluted at 4°C for up to 1 month. Avoid freeze-thaw cycles.

Expiry Date: 12 months

Images

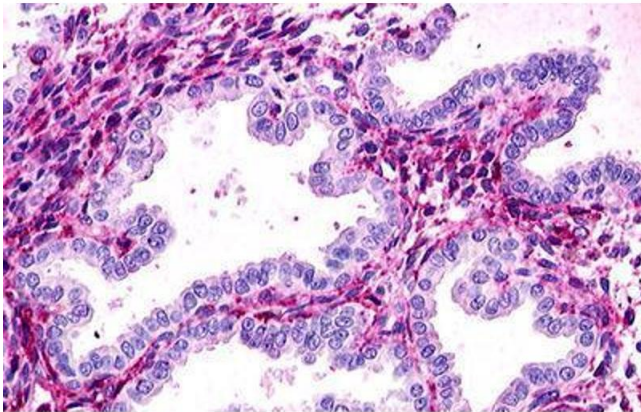
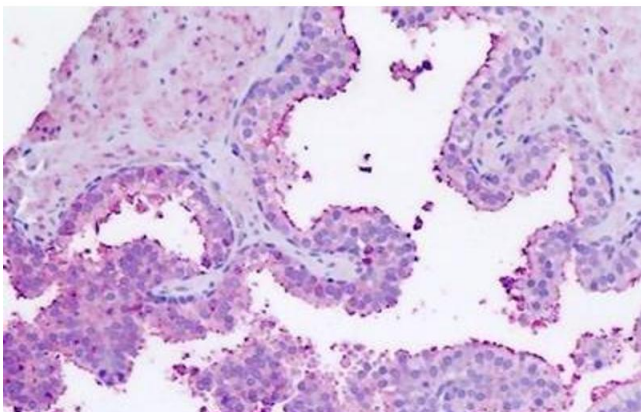
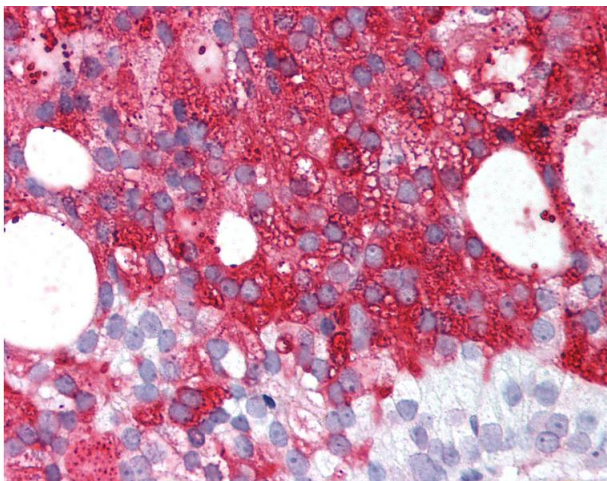


Image 1.



Immunohistochemistry

Image 2. Human Prostate: Formalin-Fixed, Paraffin-Embedded (FFPE)



Immunohistochemistry

Image 3. Anti-RXFP1/ LGR7 antibody IHC of human Prostate, Carcinoma. Immunohistochemistry of formalin-fixed, paraffin-embedded tissue after heat-induced antigen retrieval.