

Datasheet for ABIN1049492

anti-XCR1 antibody (Extracellular Domain)[Go to Product page](#)**2** Images

Overview

| | |
|----------------------|---|
| Quantity: | 50 µg |
| Target: | XCR1 |
| Binding Specificity: | Extracellular Domain |
| Reactivity: | Human |
| Host: | Rabbit |
| Clonality: | Polyclonal |
| Application: | Immunohistochemistry (IHC), ELISA, Immunohistochemistry (Paraffin-embedded Sections) (IHC (p)) |

Product Details

| | |
|-----------------------|---|
| Brand: | IHC-plus™ |
| Immunogen: | Synthetic 20 amino acid peptide from 2nd extracellular domain of human XCR1. Percent identity with other species by BLAST analysis: Human, Gorilla, Gibbon (100%), Monkey (90%), Marmoset (85%), Bovine, Panda (80%). Type of Immunogen: Synthetic peptide |
| Specificity: | Human XCR1. BLAST analysis of the peptide immunogen showed no homology with other human proteins. |
| Predicted Reactivity: | Percent identity with other species by BLAST analysis: Human, Gorilla, Gibbon (100%) Monkey (90%) Marmoset (85%) Bovine, Panda (80%). |
| Purification: | Immunoaffinity purified |

Target Details

| | |
|-------------------|---|
| Target: | XCR1 |
| Alternative Name: | XCR1 (XCR1 Products) |
| Background: | <p>Name/Gene ID: XCR1</p> <p>Subfamily: Chemokine</p> <p>Family: GPCR</p> <p>Synonyms: XCR1, CCXCR1, Chemokine (C motif) receptor 1, Chemokine XC receptor 1, G protein-coupled receptor 5, GPR5, Lptn receptor, Lymphotactin receptor, XC chemokine receptor 1, G-protein coupled receptor 5</p> |
| Gene ID: | 2829 |

Application Details

| | |
|--------------------|---|
| Application Notes: | Approved: ELISA, IHC, IHC-P (1 - 2 µg/mL) |
| Comment: | Target Species of Antibody: Human |
| Assay Procedure: | <p>The IHC-pro Immunohistochemistry Protocol</p> <p>Tissue Preparation</p> <p>Formalin fixation and embedding in paraffin wax</p> <p>Tissue Sectioning</p> <p>Make 4-µm sections and place on pre-cleaned and charged microscope slides.</p> <p>Heat in a tissue-drying oven for 45 minutes at 60°C</p> <p>Deparaffinization</p> <p>Wash slides in 3 changes of xylene – 5 minutes each at room temperature.</p> <p>Rehydration</p> <p>Wash slides in 3 changes of 100% alcohol – 3 minutes each at room temperature.</p> <p>Wash slides in 2 changes of 95% alcohol – 3 minutes each at room temperature.</p> <p>Wash slides in 1 change of 80% alcohol – 3 minutes at room temperature.</p> <p>Rinse slides in gentle running distilled water – 5 minutes at room temperature.</p> <p>Antigen retrieval</p> <p>Steam slides in 0.01 M sodium citrate buffer, pH 6.0 at 99-100°C - 20 minutes</p> |

Remove from heat and let stand at room temperature in buffer - 20 minutes

Rinse in 1X TBS with Tween (TBST) – 1 minute at room temperature.

Immunostaining

Do not allow tissues to dry at any time during the staining procedure.

Apply a universal protein block – 20 minutes at room temperature.

Drain protein block from slides, apply diluted primary antibody – 45 minutes at room temperature.

Rinse slides in 1X TBST - 1 minute at room temperature.

Apply a biotinylated secondary antibody (specific to the host of the primary antibody) - 30 minutes at room temperature.

Rinse slides 1X TBST – 1 minute at room temperature.

Apply alkaline phosphatase streptavidin – 30 minutes at room temperature.

Rinse slides in 1X TBST - 1 minute at room temperature.

Apply alkaline phosphatase chromogen substrate – 30 minutes at room temperature.

Wash slides in distilled water – 1 minute at room temperature.

Dehydrate

This method should only be used if the chromogen substrate is alcohol insoluble.

Wash slides in 2 changes of 80% alcohol – 1 minute each at room temperature.

Wash slides in 2 changes of 95% alcohol – 1 minute each at room temperature.

Wash slides in 3 changes of 100% alcohol – 1 minute each at room temperature.

Wash slides in 3 changes of xylene – 1 minute each at room temperature.

Apply coverslip

| | |
|---------------|-----------------------|
| Restrictions: | For Research Use only |
|---------------|-----------------------|

Handling

| | |
|---------|--------|
| Format: | Liquid |
|---------|--------|

| | |
|----------------|--------------|
| Concentration: | Lot specific |
|----------------|--------------|

| | |
|---------|------------------------------------|
| Buffer: | PBS, less than 0.1 % sodium azide. |
|---------|------------------------------------|

| | |
|---------------|--------------|
| Preservative: | Sodium azide |
|---------------|--------------|

| | |
|--------------------|--|
| Precaution of Use: | This product contains Sodium azide: a POISONOUS AND HAZARDOUS SUBSTANCE which should be handled by trained staff only. |
|--------------------|--|

Handling

Storage: 4 °C, -20 °C

Storage Comment: Aliquot and store undiluted at -20°C or below for up to 1 year. Can be stored undiluted at 4°C for up to 1 month. Avoid freeze-thaw cycles.

Expiry Date: 12 months

Images

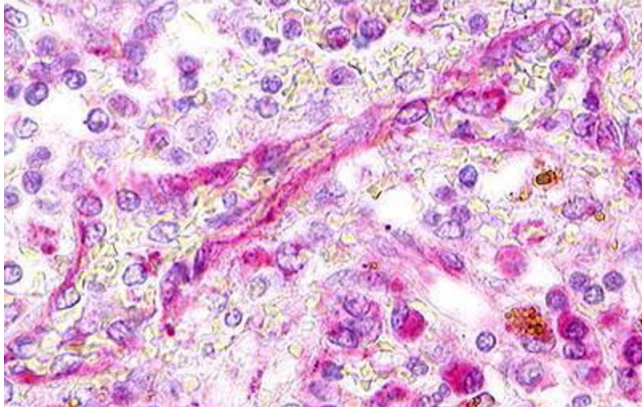
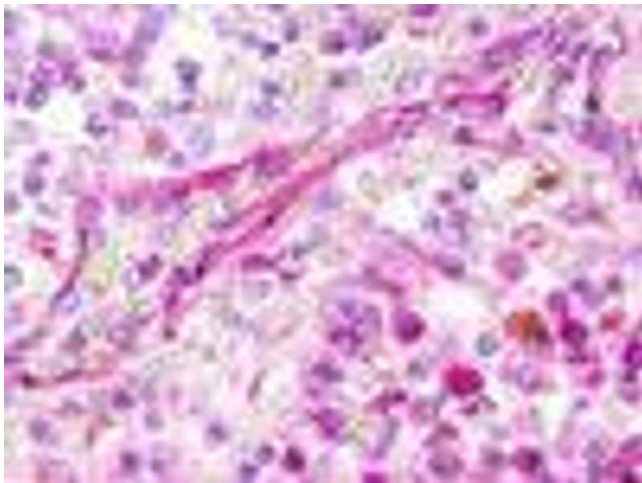


Image 1.



Immunohistochemistry

Image 2. Anti-XCR1 antibody IHC of human spleen. Immunohistochemistry of formalin-fixed, paraffin-embedded tissue after heat-induced antigen retrieval.