

Datasheet for ABIN1049509
anti-SH3G2 antibody (Internal Region)



[Go to Product page](#)

1 Image

Overview

Quantity:	100 µg
Target:	SH3G2
Binding Specificity:	Internal Region
Reactivity:	Human
Host:	Goat
Clonality:	Polyclonal
Application:	Western Blotting (WB), ELISA, Immunohistochemistry (IHC)

Product Details

Purpose:	Endophilin-A1 / SH3GL2
Immunogen:	Peptide with sequence C-SLEFPTGDSTQPN, from the of the protein sequence according to NP_003017.1.
Sequence:	SLEFPTGDST QPN
Isotype:	IgG
Cross-Reactivity:	Human, Pig
Purification:	Purified from goat serum by ammonium sulphate precipitation followed by antigen affinity chromatography using the immunizing peptide.
Grade:	Verified

Target Details

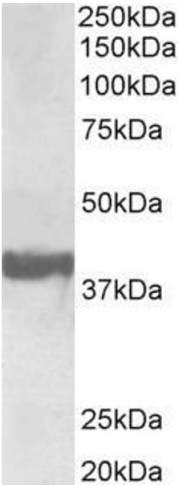
Target:	SH3G2
Alternative Name:	SH3GL2 (SH3G2 Products)
Background:	SH3GL2, SH3-domain GRB2-like 2, CNSA2, EEN-B1, FLJ20276, FLJ25015, SH3D2A, SH3P4, Endophilin A1 BAR domain, OTTHUMP00000021084, SH3 domain protein 2A, SH3 domain-containing GRB2-like protein 2, bA335L15.1 (SH3-domain GRB2-like 2), endophilin-1, endophilin
Gene ID:	6456
NCBI Accession:	NP_003017
Pathways:	Neurotrophin Signaling Pathway , EGFR Downregulation

Application Details

Application Notes:	Immunohistochemistry: In paraffin embedded Human Cerebral Cortex shows staining of cytoplasm in some but not all neuronal cells. Recommended concentration, 5-10 µg/mL. Western Blot: Approx 38 kDa band observed in Human Brain (Frontal Cortex) lysates (calculated MW of 40.0 kDa according to NP_003017.1). Recommended concentration: 0.3-1 µg/mL. Peptide ELISA: antibody detection limit dilution 1:64000.
Restrictions:	For Research Use only

Handling

Format:	Liquid
Concentration:	0.5 mg/mL
Buffer:	Supplied at 0.5 mg/mL in Tris saline, 0.02 % sodium azide, pH 7.3 with 0.5 % bovine serum albumin.
Preservative:	Sodium azide
Precaution of Use:	This product contains Sodium azide: a POISONOUS AND HAZARDOUS SUBSTANCE which should be handled by trained staff only.
Handling Advice:	Minimize freezing and thawing.
Storage:	-20 °C
Storage Comment:	Aliquot and store at -20°C, with minimal freeze/thawing. A working aliquot may be refrigerated at 4°C for a few weeks and still remain viable.



Western Blotting

Image 1. ABIN1049509 (0.3µg/ml) staining of Human Frontal Cortex lysate (35µg protein in RIPA buffer). Primary incubation was 1 hour. Detected by chemiluminescence.