

Datasheet for ABIN1049512  
**anti-C3 antibody (AA 1580-1592)**[Go to Product page](#)

## 1 Image

## Overview

Quantity:	100 µg
Target:	C3
Binding Specificity:	AA 1580-1592
Reactivity:	Human
Host:	Goat
Clonality:	Polyclonal
Application:	ELISA, Immunohistochemistry (IHC)

## Product Details

Purpose:	complement C3 (aa1580-1592)
Immunogen:	Peptide with sequence QQRTFISPIKCRE, from the C Terminus of the protein sequence according to NP_000055.2.
Sequence:	QQRTFISPIK CRE
Isotype:	IgG
Specificity:	This antibody is expected to recognize the C3 alpha chain, C3b alpha' chain and the C3c alpha' chain fragment 2.
Predicted Reactivity:	Human
Purification:	Purified from goat serum by ammonium sulphate precipitation followed by antigen affinity chromatography using the immunizing peptide.
Grade:	Verified

## Target Details

Target:	C3
Alternative Name:	Complement Component 3 ( <a href="#">C3 Products</a> )
Background:	C3, complement component 3, AHUS5, ARMD9, ASP, CPAMD1, C3 and PZP-like alpha-2-macroglobulin domain-containing protein 1, OTTHUMP00000197086, acylation-stimulating protein cleavage product, complement C3, complement component C3
Gene ID:	718
NCBI Accession:	<a href="#">NP_000055</a>
Pathways:	<a href="#">Complement System</a> , <a href="#">Regulation of Leukocyte Mediated Immunity</a> , <a href="#">Positive Regulation of Immune Effector Process</a> , <a href="#">Regulation of G-Protein Coupled Receptor Protein Signaling</a>

## Application Details

Application Notes:	<p>DS WB Results: Preliminary experiments gave an approx 125 kDa band in Human Liver lysates after 0.3 µg/mL antibody staining. Please note that currently we cannot find an explanation in the literature for the band we observe given the calculated size of 104 kDa according to the largest fragment C3 alpha chain (aa672-1663). Although this fragment is glycosylated, we have not yet found support in the literature for the observed size. The 125 kDa band was successfully blocked by incubation with the immunizing peptide.</p> <p>DS IHC Results: Paraffin embedded Human Placenta and Testis. Recommended concentration: 5 µg/mL.</p> <p>Peptide ELISA: antibody detection limit dilution 1:128000.</p>
Restrictions:	For Research Use only

## Handling

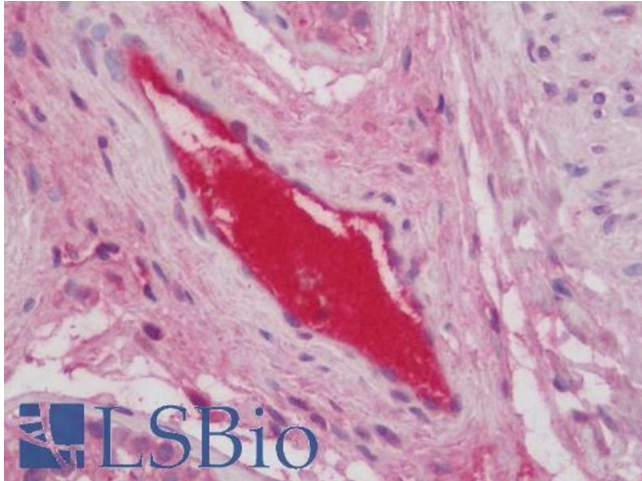
Format:	Liquid
Concentration:	0.5 mg/mL
Buffer:	Supplied at 0.5 mg/mL in Tris saline, 0.02 % sodium azide, pH 7.3 with 0.5 % bovine serum albumin.
Preservative:	Sodium azide
Precaution of Use:	This product contains Sodium azide: a POISONOUS AND HAZARDOUS SUBSTANCE which should be handled by trained staff only.
Handling Advice:	Minimize freezing and thawing.

## Handling

Storage: -20 °C

Storage Comment: Aliquot and store at -20°C, with minimal freeze/thawing. A working aliquot may be refrigerated at 4°C for a few weeks and still remain viable.

## Images



### Immunohistochemistry

**Image 1.** ABIN1049512 (5µg/ml) staining of paraffin embedded Human Testis. Steamed antigen retrieval with citrate buffer pH 6, AP-staining.