

Datasheet for ABIN105182 anti-Ovalbumin antibody



[Go to Product page](#)

1 Image

1 Publication

Overview

Quantity:	100 µg
Target:	Ovalbumin (OVA)
Reactivity:	Chicken
Host:	Rabbit
Clonality:	Polyclonal
Conjugate:	This Ovalbumin antibody is un-conjugated
Application:	Immunoelectrophoresis (IEP)

Product Details

Immunogen:	Ovalbumin [Hen Egg White] Immunogen Type: NativeProtein
Isotype:	IgG
Specificity:	This product is an IgG fraction antibody purified from monospecific antiserum by a multi-step process which includes delipidation, salt fractionation and ion exchange chromatography followed by extensive dialysis against the buffer stated above. Assay by immunoelectrophoresis resulted in a single precipitin arc against anti-Rabbit Serum as well as purified and partially purified Ovalbumin [Hen Egg White]. Cross reactivity against Ovalbumin from other sources is unknown.
Characteristics:	Anti Ovalbumin Antibody recognizes ovalbumin that is the main protein found in egg white. Ovalbumin makes up 60-65% of the total protein. Ovalbumin displays sequence and three-dimensional homology to the serpin superfamily, but unlike most serpins it is not a serine protease inhibitor. The function of ovalbumin is unknown, although it is presumed to be a

Product Details

storage protein.

Sterility: Sterile filtered

Target Details

Target: Ovalbumin (OVA)

Alternative Name: Ovalbumin ([OVA Products](#))

Background: Anti Ovalbumin Antibody recognizes ovalbumin that is the main protein found in egg white. Ovalbumin makes up 60-65% of the total protein. Ovalbumin displays sequence and three-dimensional homology to the serpin superfamily, but unlike most serpins it is not a serine protease inhibitor. The function of ovalbumin is unknown, although it is presumed to be a storage protein.

Synonyms: Ovalbumin Egg albumin Plakalbumin Allergen Gal d II Allergen=Gal d 2

Gene ID: 396058

UniProt: [P01012](#)

Application Details

Comment: Gene Name: SERPINB14

Restrictions: For Research Use only

Handling

Format: Liquid

Buffer: 0.02 M Potassium Phosphate, 0.15 M Sodium Chloride, pH 7.2

Preservative: Sodium azide

Precaution of Use: This product contains sodium azide: a POISONOUS AND HAZARDOUS SUBSTANCE which should be handled by trained staff only.

Storage: 4 °C/-20 °C

Storage Comment: Store vial at 4° C prior to restoration. For extended storage aliquot contents and freeze at -20° C or below. Avoid cycles of freezing and thawing. Centrifuge product if not completely clear after standing at room temperature. This product is stable for several weeks at 4° C as an undiluted liquid. Dilute only prior to immediate use. Expiration date is three (3) months from date of opening.

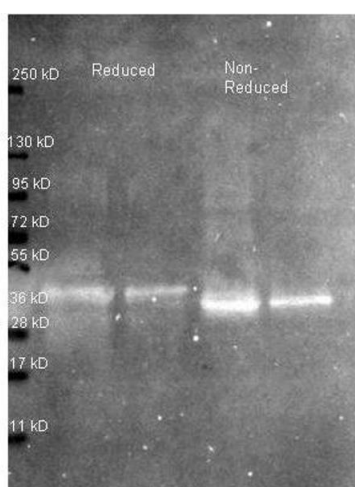
Handling

Expiry Date: 3 months

Publications

Product cited in: Hawryluk-Gara, Shibuya, Wozniak: "Vertebrate Nup53 interacts with the nuclear lamina and is required for the assembly of a Nup93-containing complex." in: **Molecular biology of the cell**, Vol. 16, Issue 5, pp. 2382-94, (2005) ([PubMed](#)).

Images



Western Blotting

Image 1. Western Blot of Rabbit anti-Ovalbumin antibody. Lane 1: ~1 µg Ovalbumin protein reduced. Lane 2: 0.25 µg Ovalbumin protein reduced. Lane 3: ~1 µg Ovalbumin protein non-reduced. Lane 4: 0.25 µg Ovalbumin protein non-reduced. Primary antibody: Ovalbumin antibody at 1:5000 for overnight at 4°C. Secondary antibody: Atto 425 conjugated goat anti rabbit secondary antibody at 1:10,000 for 1.5 hr at RT. Block: ABIN925618 buffer overnight at 4°C. Predicted/Observed size: 42.9 kDa, ~36 kDa for ovalbumin. Other band(s): none.