

Datasheet for ABIN105184

**anti-Ovalbumin antibody (HRP)**

2 Images

1 Publication

[Go to Product page](#)

## Overview

Quantity:	100 µg
Target:	Ovalbumin (OVA)
Reactivity:	Chicken
Host:	Rabbit
Clonality:	Polyclonal
Conjugate:	This Ovalbumin antibody is conjugated to HRP
Application:	Western Blotting (WB), ELISA, Immunohistochemistry (IHC)

## Product Details

Immunogen:	Anti-Ovalbumin Antibody was produced by repeated immunizations with hen egg white Ovalbumin protein. Immunogen type: Native
Isotype:	IgG
Characteristics:	Concentration Definition: by UV absorbance at 280 nm

## Target Details

Target:	Ovalbumin (OVA)
Alternative Name:	Ovalbumin ( <a href="#">OVA Products</a> )
Background:	Anti-Ovalbumin Antibody detects Ovalbumin. Ovalbumin is the main protein found in egg white, making up 60-65% of the total protein. It is a non-inhibitory serpin. It is the storage protein of egg white. Anti-Ovalbumin Antibody is ideal for investigators involved in Cell Signaling,

## Target Details

Immunology and Signal Transduction research.

Synonyms: Ovalbumin-antibody, Egg albumin antibody, Plakalbumin, Allergen Gal d II, Allergen=Gal d 2

Gene ID: 396058

UniProt: [P01012](#)

## Application Details

Application Notes: Anti-ovalbumin Antibody is suitable for western blotting, ELISA, IHC and IP. Researchers should determine optimal titers for applications that are not stated below.

Restrictions: For Research Use only

## Handling

Format: Lyophilized

Reconstitution: Restore with deionized water (or equivalent)

Concentration: 1.0 mg/mL

Buffer: 0.02 M Potassium Phosphate, 0.15 M Sodium Chloride, pH 7.2

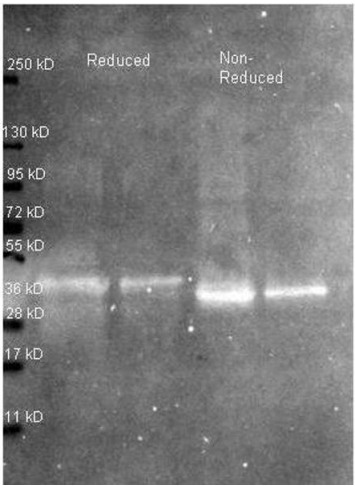
Preservative: Gentamicin sulfate

Handling Advice: Do NOT add Sodium Azide!

Storage: 4 °C

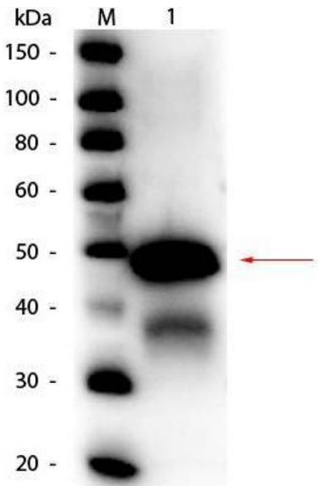
## Publications

Product cited in: Hawryluk-Gara, Shibuya, Wozniak: "Vertebrate Nup53 interacts with the nuclear lamina and is required for the assembly of a Nup93-containing complex." in: **Molecular biology of the cell**, Vol. 16, Issue 5, pp. 2382-94, (2005) ([PubMed](#)).



### Western Blotting

**Image 1.** Western Blot of Rabbit anti-Ovalbumin antibody. Lane 1: ~1 µg Ovalbumin protein reduced. Lane 2: 0.25 µg Ovalbumin protein reduced. Lane 3: ~1 µg Ovalbumin protein non-reduced. Lane 4: 0.25 µg Ovalbumin protein non-reduced. Primary antibody: Ovalbumin antibody at 1:5000 for overnight at 4°C. Secondary antibody: Atto 425 conjugated goat anti rabbit secondary antibody at 1:10,000 for 1.5 hr at RT. Block: ABIN925618 buffer overnight at 4°C. Predicted/Observed size: 42.9 kDa, ~36 kDa for ovalbumin. Other band(s): none.



### Western Blotting

**Image 2.** Western Blot of Rabbit anti-Ovalbumin Peroxidase Conjugated Antibody. Lane 1: Ovalbumin (Hen Egg). Load: 50 ng per lane. Primary antibody: Rabbit anti-Ovalbumin Peroxidase Conjugated Antibody at 1:1,000 overnight at 4°C. Secondary antibody: none Block: ABIN925618 for 30 min at RT. Predicted/Observed size: 43 kDa, 43 kDa for Ovalbumin. Other band(s): Ovalbumin splice variants and isoforms.