

Datasheet for ABIN105444

**anti-Pepsin antibody****2** Images[Go to Product page](#)

## Overview

Quantity:	100 µg
Target:	Pepsin
Reactivity:	Pig
Host:	Goat
Clonality:	Polyclonal
Conjugate:	This Pepsin antibody is un-conjugated
Application:	Western Blotting (WB), Immunohistochemistry (IHC), ELISA, Immunoprecipitation (IP)

## Product Details

Immunogen:	Anti-Pepsin Antibody was produced by repeated immunizations with pork Pepsin protein isolated from swine stomach. Immunogen Type: Native Protein
Isotype:	IgG
Cross-Reactivity (Details):	Cross reactivity against Pepsin from other tissues and species may occur but have not been specifically determined.
Purity:	Anti-PEPSIN is an IgG fraction antibody purified from monospecific antiserum by a multi-step process which includes delipidation, salt fractionation and ion exchange chromatography followed by extensive dialysis against the buffer stated above. Assay by immunoelectrophoresis resulted in a single precipitin arc against anti-Goat Serum as well as purified and partially purified Pepsin [Porcine Stomach].
Endotoxin Level:	Low Endotoxin : No

## Target Details

Target:	Pepsin
Abstract:	<a href="#">Pepsin Products</a>
Background:	<p>Pepsin antibody detects Pepsin protein. Pepsin is an enzyme whose pepsinogen is released by the chief cells in the stomach and degrades food proteins into peptides. Pepsin belongs to the peptidase A1 family and is one of three principal proteolytic enzymes in the digestive system. Pepsin is most efficient in cleaving peptide bonds between hydrophobic and preferably aromatic amino acids such as phenylalanine, tryptophan, and tyrosine at positions P1 and P1'.</p> <p>Anti-Pepsin Antibody is ideal for investigators involved in Cell Signaling and Cell Biology research. Synonyms: ec 3.4.23.1 antibody, Pepsin A antibody, Pepsin a precursor antibody, Pepsin antibody, Pepsinogen 1 second locus antibody, Pepsinogen 3 group 1 antibody, Pepsinogen a3 antibody</p>
Gene ID:	396892
UniProt:	<a href="#">P00791</a>

## Application Details

Application Notes:	<p>Anti-Pepsin antibody is suitable for western blotting to detect a single band of the expected apparent molecular weight and for ELISA. Researchers should determine optimal titers for applications that are not stated below.</p> <p>ELISA Dilution: 1:50.000 - 1:200.000</p> <p>Immunohistochemistry Dilution: 1:2.000 - 1:10.000</p> <p>IF Immunoprecipitation Dilution: 1:100</p> <p>Western Blot Dilution: 1:5.000 - 1:20.000</p>
Restrictions:	For Research Use only

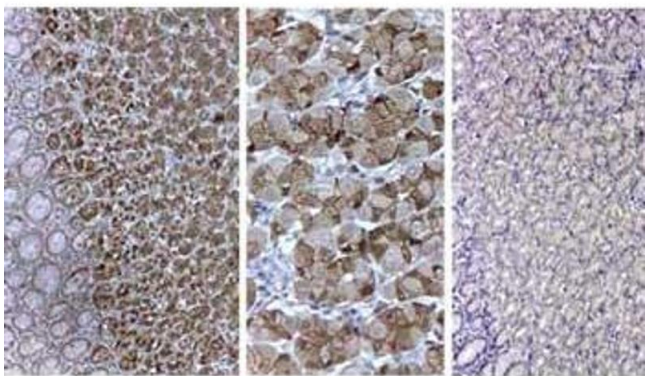
## Handling

Format:	Liquid
Concentration:	1 mg/mL
Buffer:	0.02 M Potassium Phosphate, 0.15 M Sodium Chloride, pH 7.2
Handling Advice:	Store the vial at -20°C or below after dilution. Avoid cycles of freezing and thawing.
Storage:	-20 °C
Storage Comment:	Store vial at -20 °C or below prior to opening. This vial contains a relatively low volume of

reagent (25 µL). To minimize loss of volume dilute 1:10 by adding 225 µL of the buffer stated above directly to the vial. Recap, mix thoroughly and briefly centrifuge to collect the volume at the bottom of the vial. Use this intermediate dilution when calculating final dilutions as recommended below.

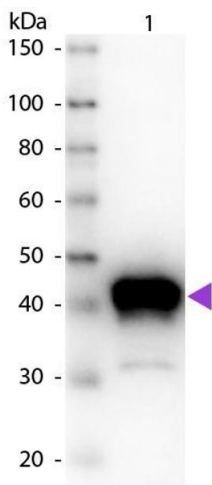
Expiry Date: Expiration date is one (1) year from date of opening.

Images



Immunohistochemistry

**Image 1.** Immunohistochemistry of goat anti-pepsin antibody. Antigen Retrieval: HIER pH6.2 10X Primary Antibody: Goat Anti-Pepsin 1 hr 1:500 Secondary Antibody: Swine anti-goat HRP 45 min followed by Staining with DAB. Staining: Gastric mucosa (containing fundic gland with zymogenic cells) homogeneous positivity in the secretory granules of glandular chief cells and in secretory granular of neck cells (Shown Left and Center) negative control with normal rabbit IgG (Shown right).



Western Blotting

**Image 2.** Western Blot of Goat anti-Pepsin Antibody. Lane 1: Pepsin. Lane 2: None. Load: 50 ng per lane. Primary antibody: Pepsin primary antibody at 1:1,000 overnight at 4°C. Secondary antibody: Peroxidase goat secondary antibody at 1:40,000 for 30 min at RT. Block: ABIN925618 for 30 min at RT. Predicted/Observed size: 35 kDa, 35 kDa for Pepsin. Other band(s): None.