



Datasheet for ABIN105570

anti-Beta-Phosphoglucomutase antibody



[Go to Product page](#)

1 Image

Overview

Quantity:	100 µg
Target:	Beta-Phosphoglucomutase
Reactivity:	Lactococcus lacti
Host:	Goat
Clonality:	Polyclonal
Conjugate:	This Beta-Phosphoglucomutase antibody is un-conjugated
Application:	ELISA

Product Details

Immunogen:	Beta Phosphoglucomutase [Lactococcus lacti] Immunogen type: Native
Isotype:	IgG
Characteristics:	Concentration Definition: by UV absorbance at 280 nm

Target Details

Target:	Beta-Phosphoglucomutase
Alternative Name:	Beta-Phosphoglucomutase (Beta-Phosphoglucomutase Products)
Background:	Synonyms: Beta PGM antibody, Glucose phosphomutase 1 antibody, Glucose phosphomutase antibody, PGM antibody, pgmB antibody
Gene ID:	1114041

Target Details

UniProt: [P71447](#)

Application Details

Application Notes: BETA-PHOSPHOGLUCOMUTASE Antibody has been assayed against 1.0 µg of b-Phosphoglucomutase [*Lactococcus lacti*] in a standard sandwich ELISA using Peroxidase conjugated Affinity Purified anti-Goat IgG [H&L] Rabbit) (ABTS (2,2'-azino-bis-[3-ethylbenthiiazoline-6-sulfonic acid])) as a substrate for 30 minutes at room temperature. A working dilution of 1:15,000 to 1:60,000 of the reconstitution concentration is suggested for this product. This product has been assayed against 1.0 µg of b-Phosphoglucomutase [*Lactococcus lacti*] in a standard sandwich ELISA using Peroxidase conjugated Affinity Purified anti-Goat IgG [H&L] (Rabbit) and (ABTS (2,2'-azino-bis-[3-ethylbenthiiazoline-6-sulfonic acid])) as a substrate for 30 minutes at room temperature. A working dilution of 1:15,000 to 1:60,000 of the reconstitution concentration is suggested for this product.

Restrictions: For Research Use only

Handling

Format: Lyophilized

Reconstitution: Restore with deionized water (or equivalent)

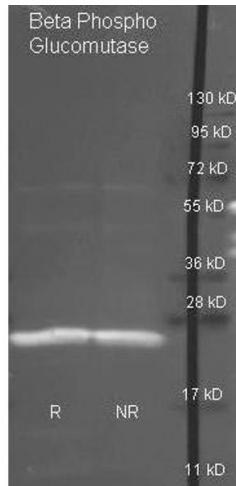
Concentration: 10.0 mg/mL

Buffer: 0.02 M Potassium Phosphate, 0.15 M Sodium Chloride, pH 7.2

Preservative: Sodium azide

Precaution of Use: This product contains sodium azide: a POISONOUS AND HAZARDOUS SUBSTANCE which should be handled by trained staff only.

Storage: 4 °C



Western Blotting

Image 1. Goat anti antibody was used to detect purified Beta Phospho Glucomutase under reducing (R) and non-reducing (NR) conditions. Reduced samples of protein contained 4% BME and were boiled for 5 minutes. Samples of ~1ug of protein per lane were run by SDS-PAGE. Protein was transferred to nitrocellulose and probed with 1:3000 dilution of primary antibody (ON 4 C in ABIN925618). Detection shown was using Dylight 488 conjugated Donkey anti goat (605-741-125 lot 21094 1:10K in TBS/ABIN925618 1 hr RT). Images were collected using the BioRad VersaDoc System.