



[Go to Product page](#)

Datasheet for ABIN105702

anti-PLG antibody

2 Images

Overview

Quantity:	100 µg
Target:	PLG
Reactivity:	Human
Host:	Goat
Clonality:	Polyclonal
Conjugate:	This PLG antibody is un-conjugated
Application:	ELISA

Product Details

Immunogen:	Plasminogen [Human Plasma] Immunogen type: Native
Isotype:	IgG
Characteristics:	Concentration Definition: by UV absorbance at 280 nm

Target Details

Target:	PLG
Alternative Name:	Plasminogen (PLG Products)
Background:	Synonyms: Angiostatin antibody, DKFZp779M0222 antibody, Microplasmin antibody, Plasmin antibody, Plasmin heavy chain A antibody, Plasmin light chain B antibody, PLG antibody
Gene ID:	5340

Target Details

UniProt: [P00747](#)

Pathways: [Complement System, Lipid Metabolism](#)

Application Details

Application Notes: PLASMINOGEN Antibody has been assayed against 1.0 ug of Plasminogen [Human Plasma] in a standard sandwich ELISA using Peroxidase conjugated Affinity Purified anti-Goat IgG [H&L] Rabbit (ABTS (2,2'-azino-bis-[3-ethylbenthiazoline-6-sulfonic acid])) as a substrate for 30 minutes at room temperature. A working dilution of 1:4,000 to 1:16,000 of the reconstitution concentration is suggested for this product.

Restrictions: For Research Use only

Handling

Format: Lyophilized

Reconstitution: Restore with deionized water (or equivalent)

Concentration: 10.0 mg/mL

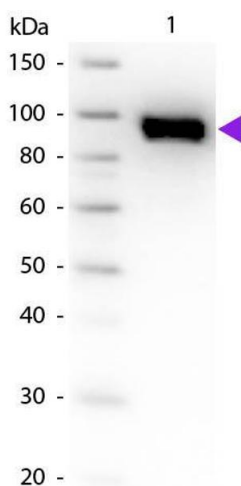
Buffer: 0.02 M Potassium Phosphate, 0.15 M Sodium Chloride, pH 7.2

Preservative: Sodium azide

Precaution of Use: This product contains sodium azide: a POISONOUS AND HAZARDOUS SUBSTANCE which should be handled by trained staff only.

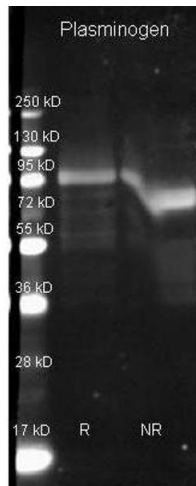
Storage: 4 °C

Images



Western Blotting

Image 1. Western blot of Goat Anti-Plasminogen primary antibody. Lane 1: Plasminogen. Lane 2: None. Load: 50 ng per lane. Primary antibody: Plasminogen primary antibody at 1:1,000 overnight at 4°C. Secondary antibody: Peroxidase goat secondary antibody at 1:40,000 for 60 min at RT. Blocking: ABIN925618 for 30 min at RT. Predicted/Observed size: 91 kDa, 91 kDa for Plasminogen. Other band(s): None.



Western Blotting

Image 2. Goat anti Plasminogen antibody was used to detect Plasminogen under reducing (R) and non-reducing (NR) conditions. Reduced samples of purified target proteins contained 4% BME and were boiled for 5 minutes. Samples of ~1ug of protein per lane were run by SDS-PAGE. Protein was transferred to nitrocellulose and probed with 1:3000 dilution of primary antibody (ON 4 C in ABIN925618). Detection shown was using Dylight 649 conjugated Donkey anti goat (605-743-125 lot 20834 1:10K in TBS/ABIN925618) 1 hr RT. Images were collected using the BioRad VersaDoc System.