



[Go to Product page](#)

Datasheet for ABIN106168
anti-Protein A antibody

1 Image

1 Publication

Overview

Quantity:	2 mL
Target:	Protein A
Reactivity:	Staphylococcus aureus
Host:	Goat
Clonality:	Polyclonal
Conjugate:	This Protein A antibody is un-conjugated
Application:	ELISA, Western Blotting (WB), Immunoprecipitation (IP), Dot Blot (DB)

Product Details

Immunogen:	Protein A [Staphylococcus aureus] Immunogentype:Native
Characteristics:	Concentration Definition: by Refractometry
Purification:	This product was prepared from monospecific antiserum by a delipidation and defibrination.

Target Details

Target:	Protein A
Abstract:	Protein A Products

Application Details

Application Notes:	Suitable for immunoblotting (western or dot blot), ELISA, immunoprecipitation and most immunological methods requiring high titer and specificity.
--------------------	--

Application Details

Restrictions: For Research Use only

Handling

Format: Lyophilized

Reconstitution: Restore with deionized water (or equivalent)

Concentration: 90 mg/mL

Buffer: 0.01 M Sodium Phosphate, 0.15 M Sodium Chloride, pH 7.2

Preservative: Sodium azide

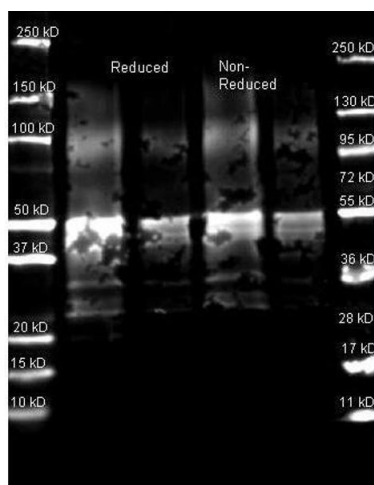
Precaution of Use: This product contains sodium azide: a POISONOUS AND HAZARDOUS SUBSTANCE which should be handled by trained staff only.

Storage: 4 °C

Publications

Product cited in: Treise, Huber, Klein-Rodewald, Heinemeyer, Grassmann, Basler, Adler, Rathkolb, Helming, Andres, Klatfen, Landbrecht, Wieland, Strom, McCoy, Macpherson, Wolf, Groettrup, Ollert, Neff, Gailus-Durner et al.: "Defective immuno- and thymoproteasome assembly causes severe immunodeficiency. ..." in: **Scientific reports**, Vol. 8, Issue 1, pp. 5975, (2018) ([PubMed](#)).

Images



Western Blotting

Image 1. Goat anti Protein A antibody (was used to detect Protein A under reducing and non-reducing conditions. Reduced samples of purified Protein A contained 4% BME and were boiled for 5 minutes. Samples of ~1ug and 0.25 ug of protein per lane were run by SDS-PAGE. Protein was transferred to nitrocellulose and probed with Goat anti Protein A antibody (200-1177 lot 17938 1:5K in MB-0070, ON 4 C). Primary antibody was detected with Dylight 649 conjugated Donkey anti Goat 605-743-125 lot 20834 1:10K 1.5 hr RT in ABIN925618 and imaged on the BioRad

VersaDoc imaging system.