

Datasheet for ABIN106173
anti-Protein A antibody (Texas Red (TR))[Go to Product page](#)

1 Image

Overview

Quantity:	20 mg
Target:	Protein A
Reactivity:	Staphylococcus aureus
Host:	Goat
Clonality:	Polyclonal
Conjugate:	This Protein A antibody is conjugated to Texas Red (TR)
Application:	Flow Cytometry (FACS), Immunomicroscopy (IM)

Product Details

Immunogen:	Protein A [Staphylococcus aureus] Immunogenotype:Native
Isotype:	IgG
Characteristics:	Concentration Definition: by UV absorbance at 280 nm

Target Details

Target:	Protein A
Abstract:	Protein A Products
Background:	This product is designed for immunofluorescence microscopy, fluorescence based plate assays (FLISA) and fluorescent western blotting. This product is also suitable for multiplex analysis, including multicolor imaging, utilizing various commercial platforms.

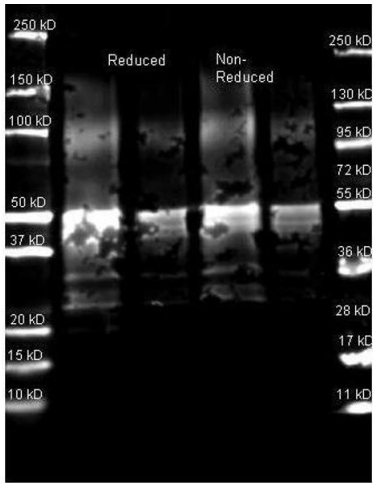
Application Details

Application Notes:	Suitable for immunomicroscopy and flow cytometry or FACS analysis as well as other antibody based fluorescent assays requiring lot-to-lot consistency.
Restrictions:	For Research Use only

Handling

Format:	Lyophilized
Reconstitution:	Restore with deionized water (or equivalent)
Concentration:	10.0 mg/mL
Buffer:	0.02 M Potassium Phosphate, 0.15 M Sodium Chloride, pH 7.2
Preservative:	Sodium azide
Precaution of Use:	This product contains sodium azide: a POISONOUS AND HAZARDOUS SUBSTANCE which should be handled by trained staff only.
Storage:	4 °C

Images



Western Blotting

Image 1. Western Blot of Goat anti-Protein A Antibody. Lane 1: Protein A Reduced. Lane 2: Protein A Reduced. Lane 3: Protein A Non-Reduced. Lane 4: Protein A Non-Reduced. Load: Lane 1 and 3 - 1.0 µg per lane, Lane 2 and 4 - 0.25 ug per lane. Primary antibody: Protein A antibody at 1:5,000 for overnight at 4°C. Secondary antibody: 649 goat secondary antibody at 1:10,000 for 90 min at RT. Block: 5% BLOTTO overnight at 4°C. Predicted/Observed size: ~50 kDa for Protein A. Other band(s): Protein A splice variants and isoforms.