



[Go to Product page](#)

Datasheet for ABIN106544
anti-RFX5 antibody (AA 32-0)

[2 Images](#)

[3 Publications](#)

Overview

Quantity:	100 µg
Target:	RFX5
Binding Specificity:	AA 32-0
Reactivity:	Human
Host:	Rabbit
Clonality:	Polyclonal
Conjugate:	This RFX5 antibody is un-conjugated
Application:	Western Blotting (WB), Gel Shift (GS)

Product Details

Immunogen:	RFX5 peptide corresponding to a region at amino acids 320 to 494 of the human protein conjugated to Keyhole Limpet Hemocyanin (KLH).
Isotype:	IgG
Characteristics:	Concentration Definition: by UV absorbance at 280 nm

Target Details

Target:	RFX5
Alternative Name:	RFX5 (RFX5 Products)
Background:	Anti-RFX5 is specific for the RFX5 protein. RFX5 is the fifth member of the growing family of DNA-binding proteins sharing a novel and highly characteristic DNA-binding domain called the RFX motif. Multiple alternatively spliced transcript variants have been found but the full-length

Target Details

natures of only two have been determined. RFX5 has been shown to interact with CIITA.
Synonyms: DNA binding protein RFX5 antibody, Influences HLA class II expression antibody, Regulatory factor X 5 antibody, Regulatory factor X subunit 5 antibody, Regulatory factor X, 5 (influences HLA class II expression) antibody

Gene ID: 5993

UniProt: [P48382](#)

Application Details

Application Notes: Anti RFX5 antibody has been assayed by immunoblot and found to be reactive against RFX5 (aa 320 to 494) from a variety of fibroblast and B-cell lysates at a dilution of 1:1,000 followed by reaction with Peroxidase conjugated Affinity Purified anti-Rabbit IgG. Anti-RFX5 (aa 320 to 494) detects a 75 kDa band by immunoblot for human RFX5. This product was also tested in a gel supershift assay and found to be reactive against RFX5 complexes using 0.5 to 1.0 µl per assay.

Restrictions: For Research Use only

Handling

Format: Liquid

Concentration: 1.0 mg/mL

Buffer: 0.02 M Potassium Phosphate, 0.15 M Sodium Chloride, pH 7.2

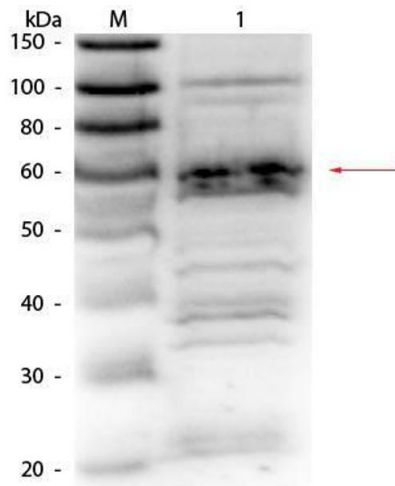
Preservative: Sodium azide

Precaution of Use: This product contains sodium azide: a POISONOUS AND HAZARDOUS SUBSTANCE which should be handled by trained staff only.

Storage: -20 °C

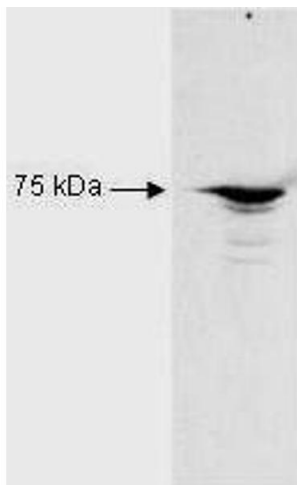
Publications

Product cited in: Ostlund, Worman: "Lamin-associated proteins." in: **Methods in cell biology**, Vol. 78, pp. 829-59, (2005) ([PubMed](#)).



Western Blotting

Image 1. Western Blot of Rabbit Anti-RFX5 antibody. Lane 1: HeLa Nuclear Extract. Load: 25 µg per lane. Primary antibody: RFX5 antibody at 1:1,000 overnight at 4°C. Secondary antibody: HRP Goat-a-Rabbit IgG secondary antibody at 1:40,000 for 30 min at RT. Block: ABIN925618 for 30 min at RT. Predicted/Observed size: 65.3 kDa, 60 kDa for RFX5.



Western Blotting

Image 2. Western Blot of Rabbit Anti-RFX5 antibody. Lane 1: Raji B cell nuclear extract lysates. Lane 2: none. Load: 35 µg per lane. Primary antibody: RFX5 antibody at 1:2,500 for overnight at 4°C. Secondary antibody: HRP Goat-a-Rabbit IgG secondary antibody at 1:5,000 for 45 min at RT. Block: 5% BLOTTO overnight at 4°C. Predicted/Observed size: 65.3 kDa, 72 kDa for RFX5. Other band(s): none.