

Datasheet for ABIN106560

anti-RNASE1 antibody[Go to Product page](#)

1 Image

Overview

Quantity:	100 µg
Target:	RNASE1
Reactivity:	Cow
Host:	Rabbit
Clonality:	Polyclonal
Conjugate:	This RNASE1 antibody is un-conjugated
Application:	Western Blotting (WB), ELISA, Immunoprecipitation (IP)

Product Details

Immunogen:	Ribonuclease A [Bovine pancreas] Immunogen Type: Native Protein
Isotype:	IgG
Cross-Reactivity (Details):	Cross reactivity against Ribonuclease A from other tissues and species may occur but have not been specifically determined.
Purity:	Anti-RIBONUCLEASE A is an IgG fraction antibody purified from monospecific antiserum by a multi-step process which includes delipidation, salt fractionation and ion exchange chromatography followed by extensive dialysis against the buffer stated above. Assay by immunoelectrophoresis resulted in a single precipitin arc against anti-Rabbit Serum as well as purified and partially purified Ribonuclease A [Bovine pancreas].
Endotoxin Level:	Low Endotoxin : No

Target Details

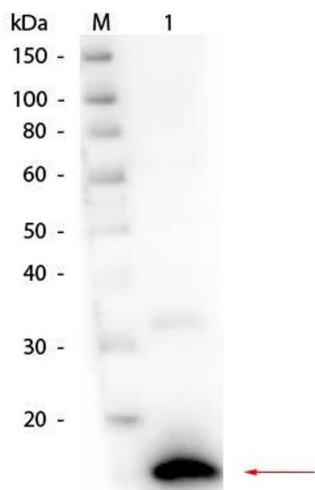
Target:	RNASE1
Alternative Name:	Ribonuclease A (RNASE1 Products)
Background:	Synonyms: Pancreatic ribonuclease antibody, Rib 1 antibody, Rib1 antibody, Ribonuclease a family 1 antibody, Ribonuclease pancreatic antibody, Ribonuclease RNase A family 1 antibody, Ribonuclease RNase A family 1 pancreatic antibody
Gene ID:	282340
UniProt:	P61823

Application Details

Application Notes:	<p>RIBONUCLEASE A Antibody has been assayed against 1.0 µg of Ribonuclease A [Bovine pancreas] in a standard sandwich ELISA using Peroxidase conjugated Affinity Purified anti-Rabbit IgG [H&L] (Goat) code #611-1302 and (ABTS (2,2'-azino-bis-[3-ethylbenthiozoline-6-sulfonic acid]) code # ABTS-100 as a substrate for 30 minutes at room temperature. A working dilution of 1:40.000 to 1:180.000 is suggested for this product.</p> <p>ELISA Dilution: 1:5.000 - 1:20.000</p> <p>IF Immunoprecipitation Dilution: 1:100</p> <p>Western Blot Dilution: 1:500 - 1:5.000</p>
Restrictions:	For Research Use only

Handling

Format:	Liquid
Buffer:	0.02 M Potassium Phosphate, 0.15 M Sodium Chloride, pH 7.2
Handling Advice:	Store the vial at -20°C or below after dilution. Avoid cycles of freezing and thawing.
Storage:	-20 °C
Storage Comment:	Store vial at -20 °C or below prior to opening. This vial contains a relatively low volume of reagent (25 µL). To minimize loss of volume dilute 1:10 by adding 225 µL of the buffer stated above directly to the vial. Recap, mix thoroughly and briefly centrifuge to collect the volume at the bottom of the vial. Use this intermediate dilution when calculating final dilutions as recommended below.
Expiry Date:	Expiration date is one (1) year from date of opening.



Western Blotting

Image 1. Western Blot of Rabbit anti-Ribonuclease A (Bovine Pancreas) Antibody. Lane 1: Ribonuclease A (Bovine Pancreas). Load: 50 ng per lane. Primary antibody: Ribonuclease A (Bovine Pancreas) Antibody at 1:1,000 overnight at 4°C. Secondary antibody: HRP rabbit secondary antibody at 1:40,000 for 30 min at RT. Block: ABIN925618 for 30 min at RT. Predicted/Observed size: 16.5 kDa, 16.5 kDa for Ribonuclease A.