

Datasheet for ABIN106826
anti-SH3BP2 antibody (pSer427)[Go to Product page](#)

1 Image

Overview

| | |
|----------------------|---------------------------------------|
| Quantity: | 100 µg |
| Target: | SH3BP2 |
| Binding Specificity: | AA 422-433, pSer427 |
| Reactivity: | Human |
| Host: | Rabbit |
| Clonality: | Polyclonal |
| Conjugate: | This SH3BP2 antibody is un-conjugated |
| Application: | Western Blotting (WB), ELISA |

Product Details

| | |
|------------------|---|
| Immunogen: | This affinity purified antibody was prepared from whole rabbit serum produced by repeated immunizations with a synthetic peptide corresponding aa 422-433 of Human SH3BP3 protein (SH3 Domain Binding Protein 2). |
| Isotype: | IgG |
| Characteristics: | Concentration Definition: by UV absorbance at 280 nm |

Target Details

| | |
|-------------------|---|
| Target: | SH3BP2 |
| Alternative Name: | SH3BP2 (SH3BP2 Products) |
| Background: | SH3BP2 Src Homology 3 Binding Protein 2 is also known as 3BP-2 and SH3 Binding Protein 2. The Src homology 3 (SH3) region is a small protein domain presented in a very large group of |

Target Details

proteins, including cytoskeletal elements and signaling proteins. SH3 domains are believed to serve as modules that mediate protein-protein associations and, along with Src homology 2 (SH2) domains, regulate cytoplasmic signaling. SH3BP2 is composed of an N terminal pleckstrin homology (PH) domain, a ten aa SH3 binding domain, three modular peptide recognition domains, and a C terminal SH2 domain. SH3BP2 function relates to signal transduction and regulation. SH3BP2 binds differentially to the SH3 domains of certain proteins of signal transduction pathways. Phosphorylation of SH3BP2 occurs on S427 for activation. SH3BP2 mediates interactions of huntingtin and MLK2 (mixed lineage kinase). Defects in SH3BP2 are the cause of cherubism (CRBM), an autosomal dominant inherited syndrome. It is characterized by excessive bone degradation of the upper and lower jaws, which often begins around three years of age. It is followed by development of fibrous tissue masses, which causes a characteristic facial swelling.

Synonyms: SH3BP2 Src Homology 3 Binding Protein 2, 3BP-2 and SH3 Binding Protein 2. SH3 domain-binding protein 2 3BP-2

Gene ID: 10825, 170014703

UniProt: [P78314](#)

Pathways: [TCR Signaling](#)

Application Details

Application Notes: This affinity purified antibody has been tested for use in ELISA and by western blot. Specific conditions for reactivity should be optimized by the end user. Expect a band approximately 60 kDa in size corresponding to SH3BP2 by western blotting in the appropriate cell lysate or extract.

Restrictions: For Research Use only

Handling

Format: Liquid

Concentration: 1.0 mg/mL

Buffer: 0.02 M Potassium Phosphate, 0.15 M Sodium Chloride, pH 7.2

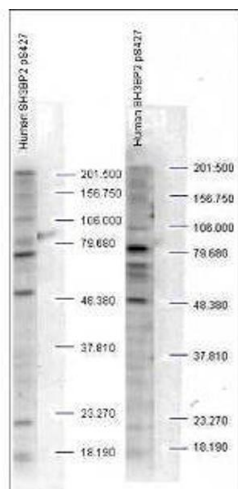
Preservative: Sodium azide

Precaution of Use: This product contains sodium azide: a POISONOUS AND HAZARDOUS SUBSTANCE which should be handled by trained staff only.

Handling

Storage: -20 °C

Images



Western Blotting

Image 1. Western blot analysis is shown using Affinity Purified anti-SH3BP2 pS427 antibody to detect endogenous protein present in unstimulated human whole cell lysates). The band as indicated by the arrowheads is evident in both M059 cells (panel A) and PC-3 cells (panel B). Comparison to a molecular weight marker indicates a band of ~60 kDa corresponding to human SH3BP2 protein. The blot was incubated with a 1:500 dilution of the antibody at room temperature followed by detection using standard techniques. Personal communication Steven Pelech, Kinexus Inc.