

Datasheet for ABIN107095

anti-Streptavidin antibody (Texas Red (TR))[Go to Product page](#)**1** Image

Overview

Quantity:	20 mg
Target:	Streptavidin
Reactivity:	Streptomyces avidinii
Host:	Rabbit
Clonality:	Polyclonal
Conjugate:	This Streptavidin antibody is conjugated to Texas Red (TR)
Application:	Flow Cytometry (FACS), Immunomicroscopy (IM)

Product Details

Immunogen:	Streptavidin (Streptomyces avidinii) Immunogenotype:Native
Isotype:	IgG
Characteristics:	Concentration Definition: by UV absorbance at 280 nm

Target Details

Target:	Streptavidin
Abstract:	Streptavidin Products
Background:	Streptavidin Antibody Texas Red™ Conjugated antibodies are designed for immunofluorescence microscopy, fluorescence based plate assays (FLISA) and fluorescent western blotting. This product is also suitable for multiplex analysis, including multicolor imaging, utilizing various commercial platforms.

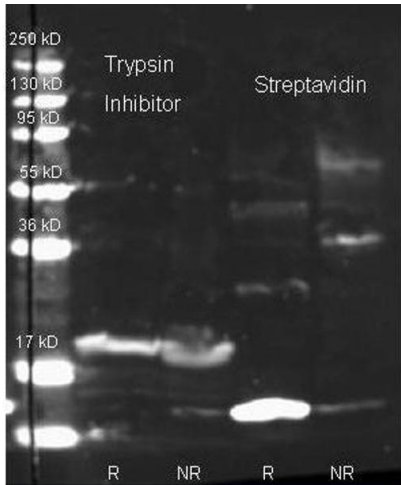
Application Details

Application Notes:	Suitable for immunomicroscopy and flow cytometry or FACS analysis as well as other antibody based fluorescent assays requiring lot-to-lot consistency.
Restrictions:	For Research Use only

Handling

Format:	Lyophilized
Reconstitution:	Restore with deionized water (or equivalent)
Concentration:	10 mg/mL
Buffer:	0.02 M Potassium Phosphate, 0.15 M Sodium Chloride, pH 7.2
Preservative:	Sodium azide
Precaution of Use:	This product contains sodium azide: a POISONOUS AND HAZARDOUS SUBSTANCE which should be handled by trained staff only.
Storage:	4 °C

Images



Western Blotting

Image 1. Rabbit anti Streptavidin (200-4195 lot 23495) and Biotin conjugated Rabbit anti-trypsin inhibitor antibody (200-4679 lot 6594) were used to detect target proteins Trypsin Inhibitor (left) and Streptavidin (right) under reducing (R) and non-reducing (NR) conditions. Reduced samples of purified target proteins contained 4% BME and were boiled for 5 minutes. Samples of ~1ug of protein per lane were run by SDS-PAGE. Protein was transferred to nitrocellulose and probed with 1:1000 dilution of primary antibody (ON 4 C). Detection shown was using Dylight 649 conjugated Donkey anti rabbit (611-743-127 lot 20831 1:10K 1.5 hr RT in ABIN925618) and imaged on the BioRad VersaDoc System