



[Go to Product page](#)

Datasheet for ABIN107148

## anti-Sucrose Phosphorylase antibody

### 1 Image

#### Overview

Quantity:	100 µg
Target:	Sucrose Phosphorylase
Reactivity:	E. coli
Host:	Goat
Clonality:	Polyclonal
Conjugate:	This Sucrose Phosphorylase antibody is un-conjugated
Application:	ELISA

#### Product Details

Immunogen:	Sucrose Phosphorylase [E.coli] Immunogen type: Native
Isotype:	IgG
Characteristics:	Concentration Definition: by UV absorbance at 280 nm

#### Target Details

Target:	Sucrose Phosphorylase
Abstract:	<a href="#">Sucrose Phosphorylase Products</a>
Background:	Synonyms: Putative sucrose phosphorylase Sucrose glucosyltransferase
Gene ID:	4492194
NCBI Accession:	<a href="#">YP_852475</a>

## Target Details

UniProt: [P76041](#)

## Application Details

**Application Notes:** SUCROSE PHOSPHORYLASE Antibody has been assayed against 1.0 µg of Sucrose Phosphorylase [E.coli] in a standard sandwich ELISA using Peroxidase conjugated Affinity Purified anti-Goat IgG [H&L] Goat) and (ABTS (2,2'-azino-bis-[3-ethylbenthiazoline-6-sulfonic acid]) as a substrate for 30 minutes at room temperature. A working dilution of 1:6,500 to 1:32,000 of the reconstitution concentration is suggested for this product.

**Restrictions:** For Research Use only

## Handling

**Format:** Lyophilized

**Reconstitution:** Restore with deionized water (or equivalent)

**Concentration:** 10.0 mg/mL

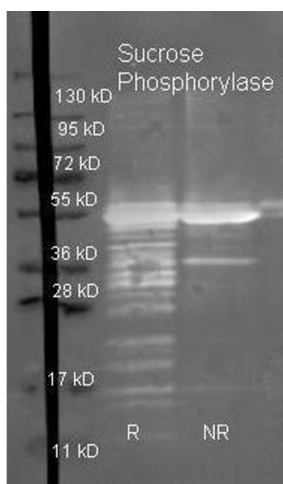
**Buffer:** 0.02 M Potassium Phosphate, 0.15 M Sodium Chloride, pH 7.2

**Preservative:** Sodium azide

**Precaution of Use:** This product contains sodium azide: a POISONOUS AND HAZARDOUS SUBSTANCE which should be handled by trained staff only.

**Storage:** 4 °C

## Images



### Western Blotting

**Image 1.** Goat anti Sucrose Phosphorylase antibody was used to detect purified Sucrose Phosphorylase under reducing (R) and non-reducing (NR) conditions. Reduced samples of purified protein contained 4% BME and were boiled for 5 minutes. Samples of ~1µg of protein per lane were run by SDS-PAGE. Protein was transferred to nitrocellulose and probed with 1:3000 dilution of primary antibody (ON 4 C in ABIN925618). Detection shown was using Dylight 488 conjugated Donkey anti goat (605-741-

125 lot 21094 1:10K in TBS/ABIN925618 1 hr RT). Images were collected using the BioRad VersaDoc System