

Datasheet for ABIN107488

anti-TYMS antibody**2** Images[Go to Product page](#)

Overview

Quantity:	100 µg
Target:	TYMS
Reactivity:	Human
Host:	Sheep
Clonality:	Polyclonal
Conjugate:	This TYMS antibody is un-conjugated
Application:	Western Blotting (WB), Immunohistochemistry (IHC), ELISA, Immunoprecipitation (IP), Fluorescence Microscopy (FM)

Product Details

Immunogen:	This antibody was purified from rabbit serum after repeated immunizations with recombinant human Thymidylate Synthase (36 kDa) produced in E.coli. Immunogenotype:Recombinant
Isotype:	IgG
Characteristics:	Concentration Definition: by UV absorbance at 280 nm

Target Details

Target:	TYMS
Alternative Name:	Thymidylate Synthase (TYMS Products)
Target Type:	Viral Protein
Background:	Synonyms: d TMP synthase antibody, EC 2.1.1.45 antibody, HsT422 antibody, MGC88736

Target Details

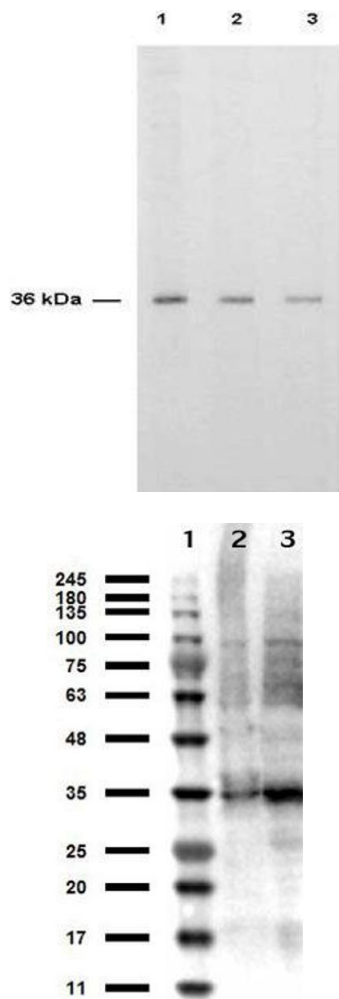
	antibody
Gene ID:	7298
UniProt:	P04818
Pathways:	Mitotic G1-G1/S Phases

Application Details

Application Notes:	THYMIDYLATE SYNTHASE antibody has been tested for use in ELISA, immunoprecipitation, immunofluorescence microscopy, immunohistochemistry and immunoblotting. The antibody recognizes the expected additional band corresponding to the ternary complex of hTS-dFUMP-reduced folate in HeLa cells treated with the TS inhibitor 5-FUdR. This event occurs in most human breast, colorectal, gastric, head and neck carcinomas. The antibody recognizes the 36,000 MW hTS. Reactivity in other immunoassays is unknown.
Restrictions:	For Research Use only

Handling

Format:	Lyophilized
Reconstitution:	Restore with deionized water (or equivalent)
Concentration:	10.0 mg/mL
Buffer:	0.02 M Potassium Phosphate, 0.15 M Sodium Chloride, pH 7.2
Preservative:	Sodium azide
Precaution of Use:	This product contains sodium azide: a POISONOUS AND HAZARDOUS SUBSTANCE which should be handled by trained staff only.
Storage:	4 °C



Western Blotting

Image 1. Anti-TS is shown to detect thymidylate synthase present in a HeLa cell extract. Each lane is estimated to contain 4 ug of protein. Lanes 1, 2 and 3 represent 1:2,000, 1:5,000 and 1:10,000 fold dilutions of the antibody. Detection was made using HRP Rabbit-a-Sheep IgG diluted 1:1,000 and color development using TMB (TMBM-100) substrate for approximately 4'.

Western Blotting

Image 2. Western Blot results of Sheep anti-Thymidylate Synthase Antibody. Lane 1: Opal Prestained Molecular Weight Ladder . Lane 2: HeLa WCL . Lane 3: MOLT-4 WCL . Load: 10µg. Primary Antibody: Sheep anti-Thymidylate Synthase at 1µg/mL overnight at 4°C. Secondary Antibody: Donkey anti-Sheep HRP at 1:40,000 for 30min at RT. Blocking: BlockOut for 30 min at RT.