

Datasheet for ABIN1077442  
**anti-IL15RA antibody**



[Go to Product page](#)

1 Image

## Overview

Quantity:	0.1 mg
Target:	IL15RA
Reactivity:	Human, Rat, Mouse
Host:	Rabbit
Clonality:	Monoclonal
Conjugate:	This IL15RA antibody is un-conjugated
Application:	Western Blotting (WB), ELISA

## Product Details

Immunogen:	Rabbit polyclonal IL-15RA antibody was raised against a 16 amino acid peptide near the center of human IL-15RA.
Isotype:	IgG
Specificity:	Multiple isoforms of IL-15RA are known to exist.
Purification:	Affinity chromatography purified via peptide column

## Target Details

Target:	IL15RA
Alternative Name:	IL15RA ( <a href="#">IL15RA Products</a> )
Background:	Interleukin 15 (IL-15RA) is a cytokine receptor that specifically binds IL-15 with high affinity. IL-15 regulates T and natural killer cell activation and proliferation. The IL-15 and IL-2 receptors share two subunits, IL-2R beta and IL-2R gamma, and IL-15RA is structurally related to IL-2RA,

## Target Details

an additional IL-2-specific alpha subunit necessary for high affinity IL-2 binding. Unlike IL-2RA, IL-15RA is capable of binding IL-15 with high affinity independent of the other subunits. IL-15RA is thought to enhance cell proliferation and expression of apoptosis inhibitor Bcl-xL and Bcl-2. Synonyms: Interleukin-15 receptor subunit alpha, IL15RA, CD215

Molecular Weight: 39 kDa

Gene ID: 3601

NCBI Accession: [NP\\_001243694](#)

Pathways: [JAK-STAT Signaling](#)

## Application Details

Application Notes: IL-15RA antibody can be used for detection of IL-15RA by Western blot at 1 - 2 µg/mL.

Comment: (IN) Interleukin-15 receptor subunit alpha

Restrictions: For Research Use only

## Handling

Format: Liquid

Concentration: 1 mg/mL

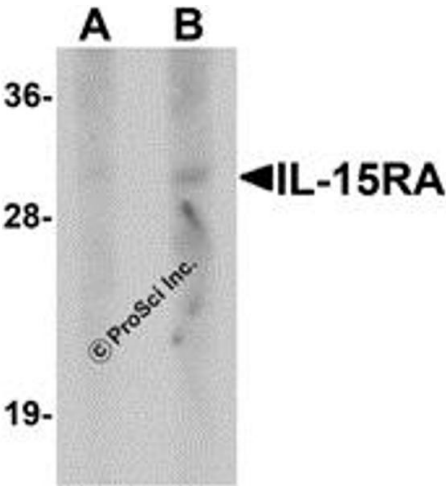
Buffer: PBS containing 0.02 % Sodium azide.

Preservative: Sodium azide

Precaution of Use: This product contains sodium azide: a POISONOUS AND HAZARDOUS SUBSTANCE which should be handled by trained staff only.

Handling Advice: As with all antibodies care should be taken to avoid repeated freeze thaw cycles. Antibodies should not be exposed to prolonged high temperatures.

Storage: 4 °C/-20 °C



Western Blotting

Image 1.