



[Go to Product page](#)

Datasheet for ABIN1077449
anti-RC3H1 antibody (C-Term)

1 Image

Overview

Quantity:	0.1 mg
Target:	RC3H1
Binding Specificity:	C-Term
Reactivity:	Human, Mouse, Rat
Host:	Rabbit
Clonality:	Monoclonal
Application:	Western Blotting (WB), ELISA

Product Details

Immunogen:	Rabbit polyclonal RC3H1 antibody was raised against an 18 amino acid peptide near the carboxy terminus of human RC3H1.
Isotype:	IgG
Specificity:	At least three isoforms of RC3H1 are known to exist, this antibody will detect all three isoforms.
Purification:	Affinity chromatography purified via peptide column

Target Details

Target:	RC3H1
Alternative Name:	RC3H1 (RC3H1 Products)
Background:	The ring finger protein RC3H1, also known as Roquin, is a highly conserved member of the RING type ubiquitin ligase protein family whose M199R mutation leads to the excessive production of follicular helper T cells and germinal centers in the sanroque strain of mice, a

Target Details

strain with excessive IL-21 production and high titers of autoantibodies. The complete loss of RC3H1 induces early death and immune deregulation but not autoimmunity in RC3H1-null mice, suggesting that the mutant RC3H1 is more disruptive to the immune system than its complete loss.

Synonyms: Ring finger and CCCH-type domains 1, ring finger protein 198, RNF198, roquin

Molecular Weight: 125 kDa

Gene ID: 149041

NCBI Accession: [NP_742068](#)

Pathways: [Ribonucleoprotein Complex Subunit Organization](#), [Activated T Cell Proliferation](#)

Application Details

Application Notes: RC3H1 antibody can be used for detection of RC3H1 by Western blot at 1 - 2 µg/mL.

Comment: (CT) Ring finger and CCCH-type domains 1

Restrictions: For Research Use only

Handling

Format: Liquid

Concentration: 1 mg/mL

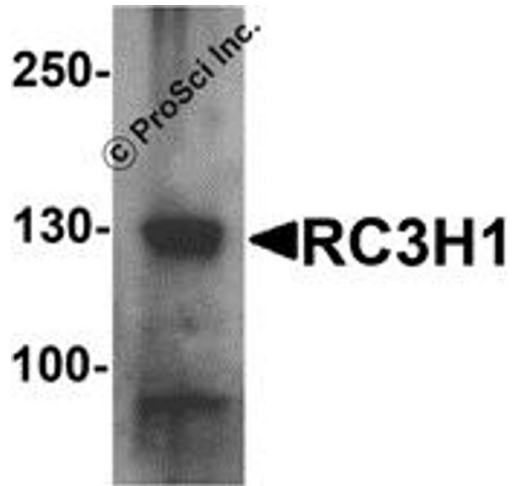
Buffer: PBS containing 0.02 % Sodium azide.

Preservative: Sodium azide

Precaution of Use: This product contains sodium azide: a POISONOUS AND HAZARDOUS SUBSTANCE which should be handled by trained staff only.

Handling Advice: As with all antibodies care should be taken to avoid repeated freeze thaw cycles. Antibodies should not be exposed to prolonged high temperatures.

Storage: 4 °C/-20 °C



Western Blotting

Image 1.