

## Datasheet for ABIN1077888 anti-Calmodulin,CAM antibody (AA 1-149)



[Go to Product page](#)

### 1 Image

#### Overview

Quantity:	100 µL
Target:	Calmodulin,CAM
Binding Specificity:	AA 1-149
Reactivity:	Chicken
Host:	Rabbit
Clonality:	Polyclonal
Application:	Western Blotting (WB), Immunocytochemistry (ICC), ELISA, Immunohistochemistry (Frozen Sections) (IHC (fro)), Immunohistochemistry (Paraffin-embedded Sections) (IHC (p))

#### Product Details

Immunogen:	Recombinant CAM expressed in E.coli. The antibody is a rabbit polyclonal antibody raised against CAM.
Sequence:	MGHHHHHHSG S-MADQLTEEQI AEFKEAFSLF DKDGDGTITT KELGTVMRSL GQNPTEAELQ DMINEVDADG NGTIDFPEFL TMMARKMKDT DSEEEIREAF RVFDKDGNGY ISAAELRHVM TNLGEKLTDE EVDEMIREAD IDGDGQVNYE EFVQMMTAK
Isotype:	IgG
Specificity:	It has been selected for its ability to recognize CAM in immunohistochemical staining and Western blotting.
Purification:	Affinity Chromatography

## Target Details

Target:	Calmodulin,CAM
Alternative Name:	Calmodulin (CAM) ( <a href="#">Calmodulin,CAM Products</a> )

## Application Details

Application Notes:	Western blotting: 1:100-400 Immunocytochemistry in formalin fixed cells: 1:100-500 Immunohistochemistry in formalin fixed frozen section: 1:100-500 Immunohistochemistry in paraffin section: 1:50-200 Enzyme-linked Immunosorbent Assay: 1:100-200 Optimal working dilutions must be determined by end user.
Comment:	Content: The quality control contains recombinant CAM (Met1~Lys149) disposed in loading buffer. Usage: 10 µL per well when 3,3'-Diaminobenzidine(DAB) as the substrate. 5 µL per well when used in enhanced chemiluminescent (ECL). Note: The quality control is specifically manufactured as the positive control. Not used for other purposes. Loading Buffer: 100 mM Tris(pH8.8), 2 % SDS, 200 mM NaCl, 50 % glycerol, BPB 0.01 % , NaN <sub>3</sub> 0.02 % .
Restrictions:	For Research Use only

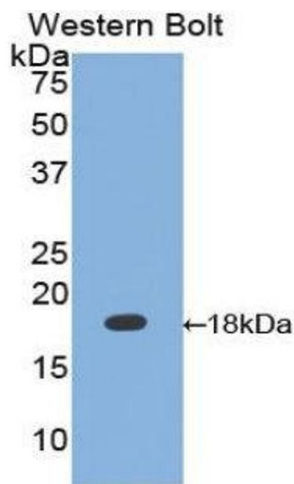
## Handling

Format:	Liquid
Concentration:	Lot specific
Buffer:	Supplied as solution form in PBS, pH7.4, containing 0.02 % NaN <sub>3</sub> , 50 % glycerol.
Preservative:	Sodium azide
Precaution of Use:	WARNING: Reagents contain sodium azide. Sodium azide is very toxic if ingested or inhaled. Avoid contact with skin, eyes, or clothing. Wear eye or face protection when handling. If skin or eye contact occurs, wash with copious amounts of water. If ingested or inhaled, contact a physician immediately. Sodium azide yields toxic hydrazoic acid under acidic conditions. Dilute azide-containing compounds in running water before discarding to avoid accumulation of potentially explosive deposits in lead or copper plumbing.
Handling Advice:	Avoid repeated freeze/thaw cycles

Handling

Storage:	4 °C
Storage Comment:	Store at 2-8 °C for one month. Aliquot and store at -80 °C for 12 months.
Expiry Date:	12 months

Images



Western Blotting

Image 1.