



[Go to Product page](#)

Datasheet for ABIN1078446
anti-PLG antibody (AA 274-560)

4 Images

Overview

Quantity:	100 µL
Target:	PLG
Binding Specificity:	AA 274-560
Reactivity:	Human
Host:	Rabbit
Clonality:	Polyclonal
Application:	Western Blotting (WB), Immunohistochemistry (IHC), Immunoprecipitation (IP), Immunocytochemistry (ICC)

Product Details

Purpose:	Polyclonal Antibody to Plasminogen (Plg)
Immunogen:	Recombinant Plasminogen (Plg) corresponding to N-terminal His Tag
Isotype:	IgG
Specificity:	The antibody is a rabbit polyclonal antibody raised against Plg. It has been selected for its ability to recognize Plg in immunohistochemical staining and western blotting.
Cross-Reactivity:	Pig, Rat
Purification:	Antigen-specific affinity chromatography followed by Protein A affinity chromatography

Target Details

Target:	PLG
---------	-----

Target Details

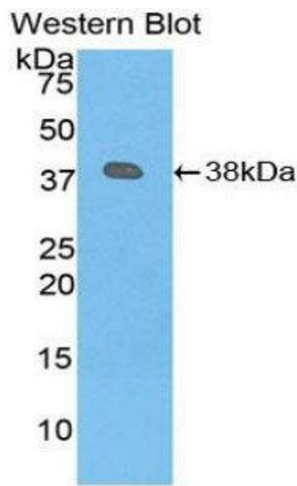
Alternative Name:	Plasminogen (PLG Products)
Background:	PL, Plasmin, Activation peptide, Angiostatin
Pathways:	Complement System , Lipid Metabolism

Application Details

Application Notes:	Western blotting: 0.5-5 µg/mL Immunohistochemistry: 5-20 µg/mL Immunocytochemistry: 5-20 µg/mL Optimal working dilutions must be determined by end user.
Comment:	The thermal stability is described by the loss rate. The loss rate was determined by accelerated thermal degradation test, that is, incubate the protein at 37°C for 48h, and no obvious degradation and precipitation were observed. The loss rate is less than 5% within the expiration date under appropriate storage condition.
Restrictions:	For Research Use only

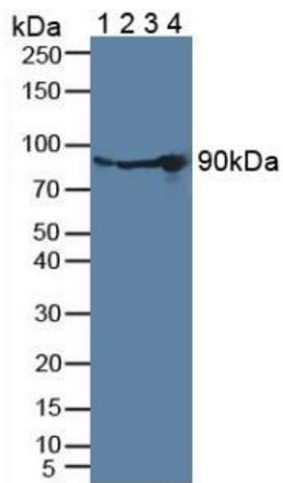
Handling

Format:	Liquid
Concentration:	Lot specific
Buffer:	0.01M PBS, pH 7.4, containing 0.05 % Proclin-300, 50 % glycerol.
Preservative:	ProClin
Precaution of Use:	WARNING: Reagents contain sodium azide. Sodium azide is very toxic if ingested or inhaled. Avoid contact with skin, eyes, or clothing. Wear eye or face protection when handling. If skin or eye contact occurs, wash with copious amounts of water. If ingested or inhaled, contact a physician immediately. Sodium azide yields toxic hydrazoic acid under acidic conditions. Dilute azide-containing compounds in running water before discarding to avoid accumulation of potentially explosive deposits in lead or copper plumbing.
Handling Advice:	Avoid repeated freeze-thaw cycles.
Storage:	4 °C,-20 °C
Storage Comment:	Store at 4°C for frequent use. Stored at -20°C in a manual defrost freezer for two year without detectable loss of activity. Avoid repeated freeze-thaw cycles.
Expiry Date:	24 months



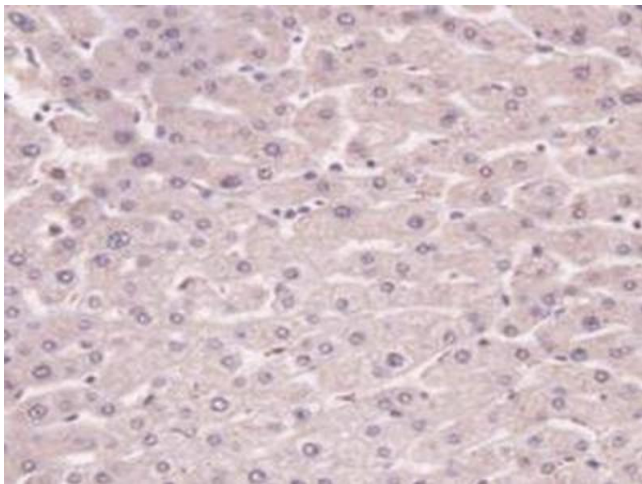
Western Blotting

Image 1.



Western Blotting

Image 2. Figure. Western Blot; Sample: Lane1: Rat Serum; Lane2: Rat Blood Cells; Lane3: Rat Spleen Tissue; Lane4: Porcine Liver Tissue.



Immunohistochemistry

Image 3. Figure. DAB staining on IHC-P; Samples: Human Liver Tissue.

Please check the [product details page](#) for more images. Overall 4 images are available for ABIN1078446.