

Datasheet for ABIN108413

**anti-Cellular Fibronectin antibody**[Go to Product page](#)**1** Image

## Overview

Quantity:	100 µg
Target:	Cellular Fibronectin
Reactivity:	Human, Chicken, Guinea Pig, Rabbit, Rat
Host:	Mouse
Clonality:	Monoclonal
Conjugate:	This Cellular Fibronectin antibody is un-conjugated
Application:	Immunohistochemistry (IHC), Western Blotting (WB), ELISA

## Product Details

Immunogen:	Monoclonal antibody (Mab) to cFn is derived from the hybridoma produced by fusion between myeloma cells and Balb/c spleen cells. Purified fibronectin from A8387 fibrosarcoma cells was used as an immunogen (21).
Clone:	DH1
Isotype:	IgG1
Specificity:	The antibody is specific to extradomain A (EDA) sequence of a cellular fibronectin and recognizes thus only the cellular fibronectin. Mab DHI has been shown to specifically block chondrocyte condensation in chicken embryos (5). The antibody crossreacts with human, chicken, rat, rabbit and guinea pig

## Target Details

Target:	Cellular Fibronectin
---------	----------------------

## Target Details

Alternative Name: Cellular Fibronectin (cFn) ([Cellular Fibronectin Products](#))

Background: The monoclonal antibody DH1 recognizes only cellular form of Fibronectin. DH1 is specific to the extra domain A (EDA) of the molecule. cFns are found in some basement membranes during development and only in distinct tissues in adult, for instance in smooth muscle and alveolar walls of airways. cFns are abundant in the plasma of carcinoma patients and in the stroma of various carcinomas.

## Application Details

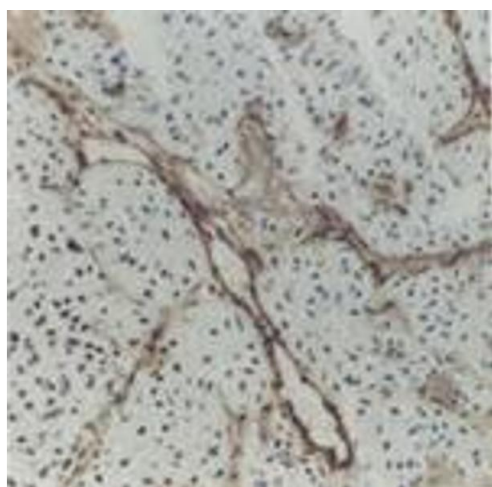
Application Notes: No reactivity with paraffin sections. Working dilution in western blotting is at least 1:1000.

Restrictions: For Research Use only

## Handling

Storage: 4 °C

## Images



**Image 1.** Cellular fibronectin (MAb DH1, cFn)