

Datasheet for ABIN108425

**anti-GABA antibody****2** Images[Go to Product page](#)

## Overview

Quantity:	100 µg
Target:	GABA
Reactivity:	Human
Host:	Mouse
Clonality:	Monoclonal
Conjugate:	This GABA antibody is un-conjugated
Application:	Immunohistochemistry (IHC), ELISA

## Product Details

Immunogen:	Monoclonal antibody to GABA is derived from the hybridoma produced by fusion between myeloma cells and Balb/c spleen cells. GABA-coupled to BSA with glutaraldehyde was used as an immunogen
Clone:	5A9
Isotype:	IgG1
Specificity:	The antibody is highly specific to GABA and does not react with other amino acid-BSA conjugates with the exception of weak reaction against b-alanine BSA-conjugate at the highest concentrations used

## Target Details

Target:	GABA
Alternative Name:	GABA (Gamma-Aminobutyric Acid) ( <a href="#">GABA Products</a> )

## Target Details

Target Type: Amino Acid

Background: In the central nervous system GABA is an early neurotransmitter, which can be detected in the developing nervous system. GABA functions as a neurotransmitter also in the peripheral nervous system. Most studies thusfar published on immunolocalization of GABA containing neurons have been made with rabbit polyclonal antibodies. Clearly, there is an increasing need for monoclonal antibodies against neurotransmitters that would enable double immunolocalization studies. Monoclonal antibody 5A9 can be successfully applied with rabbit polyclonal antibodies in double labeling studies as well as a perfect probe for GABA. The antibody has successfully been used in several leading neurobiology laboratories.

## Application Details

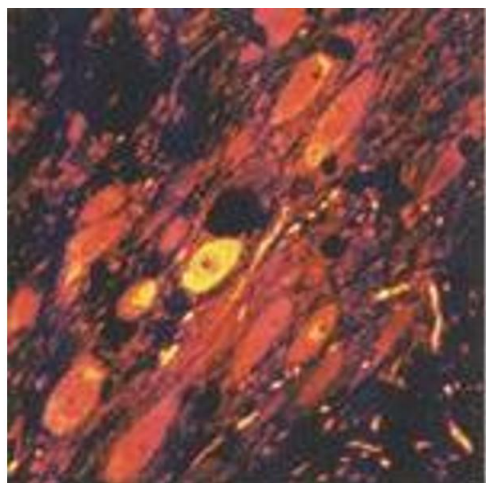
Application Notes: Reactivity with paraffin sections. Fluorescence microscopy and other immunohistochemical methods, works also on frozen sections if perfusion fixed. Glutaraldehyde must be included in the fixative with paraffin sections.

Restrictions: For Research Use only

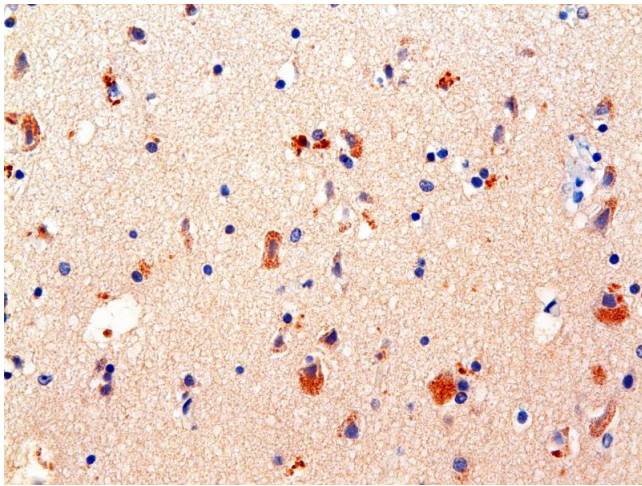
## Handling

Storage: 4 °C

## Images



**Image 1.** GABAergic neurons in the reticular nucleus of the thalamus (MAb 5A9, GABA)



## Immunohistochemistry

Image 2.