



[Go to Product page](#)

Datasheet for ABIN108427

anti-alpha Actinin antibody

1 Image

Overview

Quantity:	100 µg
Target:	alpha Actinin (ACTN)
Reactivity:	Human
Host:	Mouse
Clonality:	Monoclonal
Conjugate:	This alpha Actinin antibody is un-conjugated
Application:	Western Blotting (WB), Immunohistochemistry (IHC)

Product Details

Immunogen:	Monoclonal antibody to a-actinin is derived from the hybridoma produced by fusion between myeloma cells and Balb/c spleen cells. Purified a-actinin from chicken gizzard was used as an immunogen
Clone:	CB11
Isotype:	IgG1
Specificity:	The antibody is specific to the 100 kD a-actinin polypeptide and reacts with human and chicken cells.

Target Details

Target:	alpha Actinin (ACTN)
Alternative Name:	Actinin, alpha- (ACTN Products)
Background:	Monoclonal Antibody to Human Cytoskeletal Polypeptides

Target Details

Pathways: [Cell-Cell Junction Organization](#), [Negative Regulation of Transporter Activity](#)

Application Details

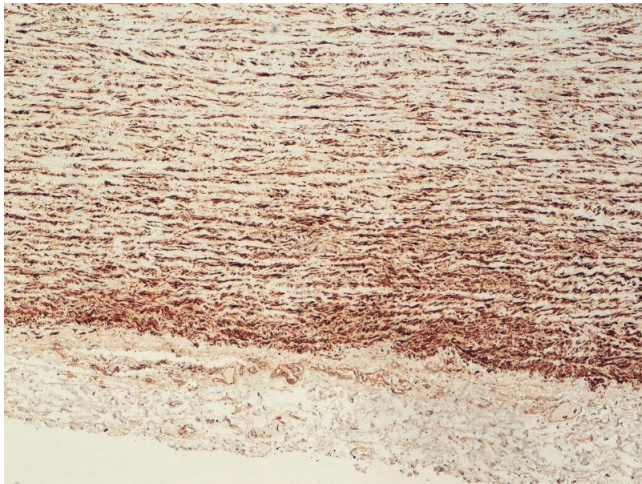
Application Notes: No reactivity with paraffin sections. Working dilution in western blotting is at least 1:1000

Restrictions: For Research Use only

Handling

Storage: 4 °C

Images



Immunohistochemistry

Image 1.