

Datasheet for ABIN108431
anti-Keratin 8/18/19 antibody

2 Images

[Go to Product page](#)

Overview

Quantity:	100 µg
Target:	Keratin 8/18/19 (KRT8/18/19)
Reactivity:	Human
Host:	Mouse
Clonality:	Monoclonal
Conjugate:	This Keratin 8/18/19 antibody is un-conjugated
Application:	Western Blotting (WB), Immunohistochemistry (IHC)

Product Details

Immunogen:	Monoclonal antibody to cytokeratin is derived from the hybridoma produced by fusion between myeloma cells and Balb/c spleen cells. Cytokeratins isolated from cultured pig kidney epithelial cells were used as immunogen
Clone:	2A4
Isotype:	IgG1
Specificity:	The antibody recognizes cytokeratin nos. 8, 18 and 19 typical for simple epithelial cells

Target Details

Target:	Keratin 8/18/19 (KRT8/18/19)
Alternative Name:	Cytokeratin 8,18,19 (KRT8/18/19 Products)
Background:	Monoclonal Antibody to Human Cytoskeletal Polypeptides

Application Details

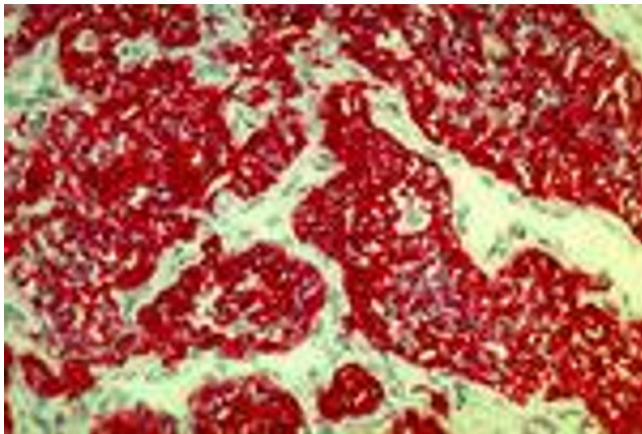
Application Notes: No reactivity with paraffin sections. Working dilution in western blotting is at least 1:1000

Restrictions: For Research Use only

Handling

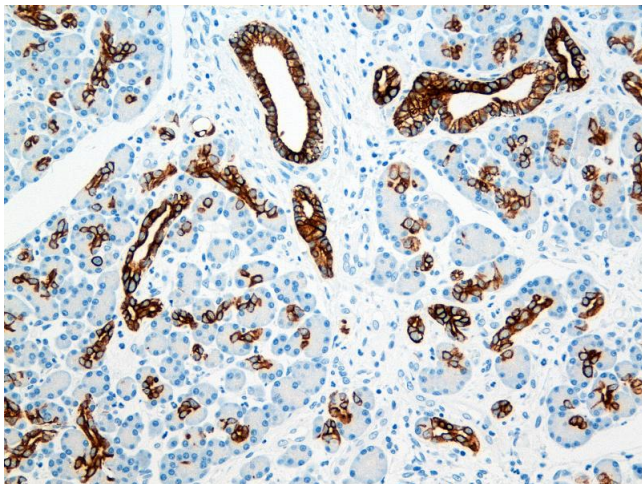
Storage: 4 °C

Images



Immunohistochemistry

Image 1. Renal cell carcinoma (MAb 2A4, cytokeratin 8, 18, 19)



Immunohistochemistry

Image 2.