



[Go to Product page](#)

Datasheet for ABIN108432
anti-Keratin 7/17/19 antibody

1 Image

Overview

Quantity:	100 µg
Target:	Keratin 7/17/19 (KRT7/17/19)
Reactivity:	Human
Host:	Mouse
Clonality:	Monoclonal
Conjugate:	This Keratin 7/17/19 antibody is un-conjugated
Application:	Immunohistochemistry (IHC), Western Blotting (WB)

Product Details

Immunogen:	Monoclonal antibody to cytokeratin is derived from the hybridoma produced by fusion between myeloma cells and Balb/c spleen cells. Purified cytokeratins from cultured pig kidney epithelial cells were used as immunogen.
Clone:	4F5
Isotype:	IgG1
Specificity:	The antibody recognizes cytokeratins nos. 7, 17 and 19 typical for many simple epithelial cells but is found also in cells in squamous epithelia.

Target Details

Target:	Keratin 7/17/19 (KRT7/17/19)
Alternative Name:	Cytokeratin 7,17,19 (KRT7/17/19 Products)
Background:	Monoclonal Antibody to Human Cytoskeletal Polypeptides

Application Details

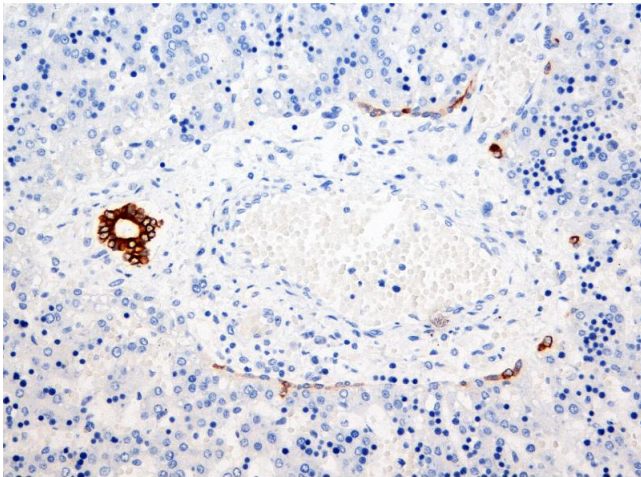
Application Notes: No reactivity with paraffin sections. Working dilution in western blotting is at least 1:1000

Restrictions: For Research Use only

Handling

Storage: 4 °C

Images



Immunohistochemistry

Image 1.