

Datasheet for ABIN108437  
**anti-SPTA1 antibody**



[Go to Product page](#)

1 Image

## Overview

Quantity:	100 µg
Target:	SPTA1
Reactivity:	Human
Host:	Mouse
Clonality:	Monoclonal
Conjugate:	This SPTA1 antibody is un-conjugated
Application:	Western Blotting (WB), Immunohistochemistry (IHC), Immunoprecipitation (IP)

## Product Details

Immunogen:	Monoclonal antibody to erythroid a-spectrin is derived from the hybridoma produced by fusion between myeloma cells and Balb/c spleen cells. Ghost proteins of human red blood cells were used as immunogen
Clone:	AF10
Isotype:	IgG1
Specificity:	The antibody is specific to the 240kD erythroid a-spectrin

## Target Details

Target:	SPTA1
Alternative Name:	Erythroid alpha Spectrin ( <a href="#">SPTA1 Products</a> )
Background:	Monoclonal Antibody to Human Spectrins

## Target Details

Pathways: [Regulation of Actin Filament Polymerization](#)

## Application Details

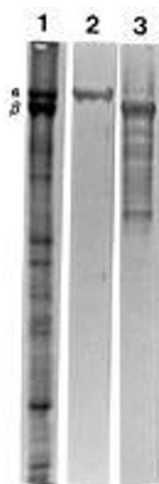
Application Notes: Various immunochemical reactions to detect erythroid spectrins. Identification of erythroid leukemias (1). Works in immunoprecipitation, western blotting and immunocytochemistry. No reactivity with paraffin sections. Working dilution in western blotting i

Restrictions: For Research Use only

## Handling

Storage: 4 °C

## Images



### Western Blotting

**Image 1.** Western blotting polypeptides of ghosts of human erythrocytes (Lane 1, total protein profile) and reaction with MAb AF10 (Erythroid a-Spectrin)(Lane 2) and MAb DB2 (Erythroid b-Spectrin)